

LEGISLATIVE APPROPRIATIONS REQUEST

FISCAL YEARS 2022 AND 2023
TSTC IN MARSHALL

LEGISLATIVE APPROPRIATIONS REQUEST FOR FISCAL YEARS 2022 & 2023

Submitted to the Governor's Office of Budget, Planning
and Policy and the Legislative Budget Board
by Texas State Technical College in Marshall.

Original submission as of September 18, 2020.

Amended submission as of October 23, 2020.

Amended submission as of November 3, 2020.

CONTENTS

Administrator’s Statement	2	Exceptional Items	
Organization Chart	8	4.A. Exceptional Item Request Schedule	51
Certificate of Dual Submissions	9	4.B. Exceptional Items Strategy Allocation Schedule	55
Summaries of Request		4.C. Exceptional Items Strategy Request	57
Budget Overview of Biennial Amounts	10	General Revenue (GR) and	59
2.A. Summary of Base Request by Strategy	11	General Revenue-Dedicated (GR-D) Baseline	
2.B. Summary of Base Request by Method of Finance	14	Supporting Schedules	
2.C. Summary of Base Request by Object of Expense	19	6.A. Historically Underutilized	61
2.D. Summary of Base Request Objective Outcomes	20	Business Supporting Schedule	
2.E. Summary of Exceptional Items Request	21	6.G. Homeland Security Funding Schedule - Part C	62
2.F. Summary of Total Request by Strategy	22	Covid-19 Related Expenditures	
2.G. Summary of Total Request Objective Outcomes	25	6.H. Estimated Funds Outside the Institution’s	63
Strategy Request		Bill Pattern	
3.A. Instruction and Administration	26	6.L. Document Production Standards	64
Staff Group Insurance Premiums	29	8. Summary of Requests for Facilities-Related Projects	65
Workers’ Compensation Insurance	31	Higher Education Supporting Schedules	
Texas Public Education Grants	33	Schedule 1A: Other Educational and General Income	66
Dual Credit Enrollment	35	Schedule 2: Selected Educational, General and Other Funds	69
Educational and General Space Support	38	Schedule 3A: Staff Group Insurance Data Elements (ERS)	70
Tuition Revenue Bond Retirement	41	Schedule 4: Computation of OASI	73
Small Institution Supplement	43	Schedule 5: Calculation of Retirement Proportionality	74
Institutional Enhancement	45	and ORP Differential	
Exceptional Item Request	47	Schedule 6: Constitutional Capital Funding	75
3.A.1 Program - Level Request Schedule	50	Schedule 7: Personnel	76
		Schedule 8A: Tuition Revenue Bond Projects	77
		Schedule 8C: Tuition Revenue Bonds Request by Project	78
		Schedule 9: Non-formula Support	79

71E Texas State Technical College - Marshall

In accordance with the instructions, Texas State Technical College (TSTC) submits the following Legislative Appropriations Request (LAR) for fiscal years 2022 and 2023 to the Governor's Office of Budget, Policy, and Planning and the Legislative Budget Board. TSTC's LAR is submitted in a manner consistent with the description of TSTC in Section 135.02 of the Texas Education Code, including a LAR for the System Administration unit and the College's six campus bill patterns.

OVERVIEW

Texas State Technical College (TSTC or the College) is the State of Texas' leading provider of two-year technical education in industries critical to the State's long-term sustainable growth. As the one Texas institution whose primary funding is driven solely from the success of its students in the workplace, TSTC is an essential partner to industry as Texas faces the threat of a long-emerging trade and industrial skills gap. As the State rebounds from the COVID-19 induced recession, the College will serve at the front lines of the economic recovery. With this in mind, the College is steering all resources of the 10-campus, statewide institution towards building and maintaining a globally competitive workforce for Texas business and industry.

To support this statewide mission, TSTC operates campuses in Abilene, Breckenridge, Brownwood, the East Williamson County Higher Education Center (in Hutto), TSTC in Fort Bend County (in Rosenberg), Harlingen, Marshall, TSTC in North Texas (in Red Oak), Sweetwater, and Waco. With these ten campuses across Texas, TSTC is set to place over 6,000 graduates in great paying jobs over the next biennium (2022-2023).

In the spring of 2020, the COVID-19 pandemic and related shutdown triggered a disruption with devastating consequences for much of higher education and, consequently, is referenced throughout TSTC's response to the issues featured in the Administrator's Statement instructions, including Policy Changes, Changes to Provisions of Service, Externalities, New Funding Requests, and TSTC's Approach to Baseline Reductions established by the Policy Letter.

SIGNIFICANT CHANGES IN POLICY

The pandemic-driven recession and subsequent consumer lockdown came quickly and relentlessly. So, too, did the calamity of historically low oil prices. The resulting economic and societal turbulence increased the focus of potential students on skills-based, short-term credentials that are clearly tied to careers. Fortunately, TSTC's unique mission, funding and operating structures focus the institution on the employability of its former students. As a result, two relevant policy issues are presented with this legislative appropriation request.

Accountability Funding. While there will be new and emerging occupational skills resulting from the pandemic, in general, the industries and occupations that TSTC supplied prior to the pandemic will continue to drive the economy in 2022 and 2023. TSTC's student employability-based funding structure couldn't be more relevant as Texas and the nation emerge from the current recession. TSTC's accountability funding fuels the talent supply chain key to the economic recovery. Maintaining TSTC's funding, or "commission" rate reaffirms accountability funding policy; one that aligns the interests of TSTC, its students and the employers of Texas. Figure 1 illustrates the historical funding pattern for TSTC's primary funding source, the instruction and administration formula funding (a wholly accountability-based funding strategy).

Insufficient Student Aid for Rapid Response Solutions for Unemployment Surge. Student aid systems do not have the flexibility to support fast-to-work solutions necessary to address the sudden unemployment surge brought on by the pandemic and economic shutdown. Conventional student aid mechanisms are built on the premise that more time in class results in more value for students. That conventional premise often does not serve students, employers or taxpayers well. TSTC developed several new products to provide solutions to the rising numbers of unemployed workforce. These programs target essential skills to rapidly return unemployed and underemployed Texans back into the workforce. A major challenge for these programs is the lack of available financial aid for a target market with the highest financial need.

71E Texas State Technical College - Marshall

SIGNIFICANT CHANGES IN PROVISION OF SERVICE AND SIGNIFICANT EXTERNALITIES

Social Distancing. The COVID-19 pandemic and the related shutdown triggered a disruption that had devastating consequences for much of higher education. Public colleges and universities across the nation spent enormous sums of money to support their students through the pandemic, switching to online education and issuing refunds or losing significant revenues related to parking, housing and dining services.

Social distancing requirements significantly affected TSTC's operations but several factors allowed the College to mitigate some of the disruptive impact ushered in by the pandemic. Most of TSTC's programs are classified as critical or essential, so these programs were exempted from the broad school closure requirements. Some of the instructional delivery could shift online but the majority of TSTC's programs require a face-to-face modality due to their hands-on nature. TSTC converted the vast majority of instructional delivery to a socially-distant, safe format and resumed on-campus instruction in early May 2020. Then, the college successfully completed the Spring 2020 semester and continued safety protocols into the Summer 2020 and Fall 2020 semesters.

The requirements for this safer, socially-distant delivery significantly constrain teaching capacities, including lab space, equipment, and faculty. Students and faculty are required to spread out, increasing the amount of space required to teach. To mitigate these new constraints and teach the same number of students, TSTC must shift schedules, repurpose space, increase teaching time, and add equipment. Figures 2 and 3 illustrate this converted teaching modality as well as the increased constraints on capacities.

Recession-driven Enrollment Surge Trend. In each of the three previous recessions, total community and technical college enrollments increased significantly at the beginning of the recession. Younger, unskilled workers are typically among the first to lose their jobs in a recession and contribute to the waves of enrollment that follow a recession. The COVID-19 recession is unique, and may have a unique enrollment response due to student health concerns and recovery phases unlike other recessions. TSTC is shifting all resources of the College to manage through new social-distancing constraints to optimize its response to different enrollment surge scenarios.

PURPOSE OF FUNDING REQUESTS

TSTC's funding requests focus on maintaining or expanding instructional capacities necessary to address the growing trade skills gap for Texas.

Policy Letter Requirements Response. TSTC received the LBB and Governor's Office approved General Revenue/General Revenue-Dedicated Limits shortly after release of the Policy Letter, reducing non-exempt funding sources by 5 percent. The approach to meeting the requirements of the Policy Letter is similar to TSTC's ongoing fiscal management strategy. TSTC continuously directs capital to the highest performing programs that possess the highest market opportunity and cuts capital allocations to its lowest performing programs with the least market opportunity. The base reduction strategy disproportionately cuts programs that reside in the highest market opportunity since the reduction is applied to start-up funding (a proxy for formula funding because of the lag in TSTC's performance-based funding formula). Start-up funding exists for TSTC's newest programs that were located in the regions with the highest needs for skills.

On a routine basis, the College curates its inventory of programs to ensure investment is directed to those that are high performing and to ensure that low performing programs are closed out. Similarly, non-instructional operations are vetted for relevance, impact and performance with personnel and funding allocations directed to those that perform at the highest level. Consequently, TSTC's strategy for addressing funding reductions would include assessment of expenditures statewide and would target programs, campus locations, or departments with lowest production, impact or relevancy to the future needs of the College.

71E Texas State Technical College - Marshall

EXCEPTIONAL ITEMS

Restoration of Dual Credit & Other Funding. The approved General Revenue/General Revenue-Dedicated Limits reduced nonexempt funding categories by 5 percent. This reduction impacted dual credit funding as well as important allocations for workers comp and institutional enhancement.

Tuition Revenue Bonds. As Texas emerges from the recession ushered in by the COVID-19 pandemic and the related shutdown, Texas employers will increasingly generate demand for skilled technicians and tradesmen. This demand is expected to grow for the next few decades. However, over recent decades, the supply of skilled labor has historically been insufficient to meet the needs of Texas employers. This is especially true for heavy industrial workforce gaps. COVID-19 and the related social distancing protocol exacerbated this supply issue by significantly constraining the facility capacity for these programs.

TSTC in Marshall seeks to add or recapture lost instructional capacity by constructing 65,750 square feet of flexible, industrial technology training facilities. This multidisciplinary space will accommodate a versatile training modality suitable for both traditional and performance-based education. This space will be able to meet immediate demand in the areas of diesel and welding, but will be flexible to accommodate changes in the labor market to meet the needs of employers for decades to come.

Figure 1:

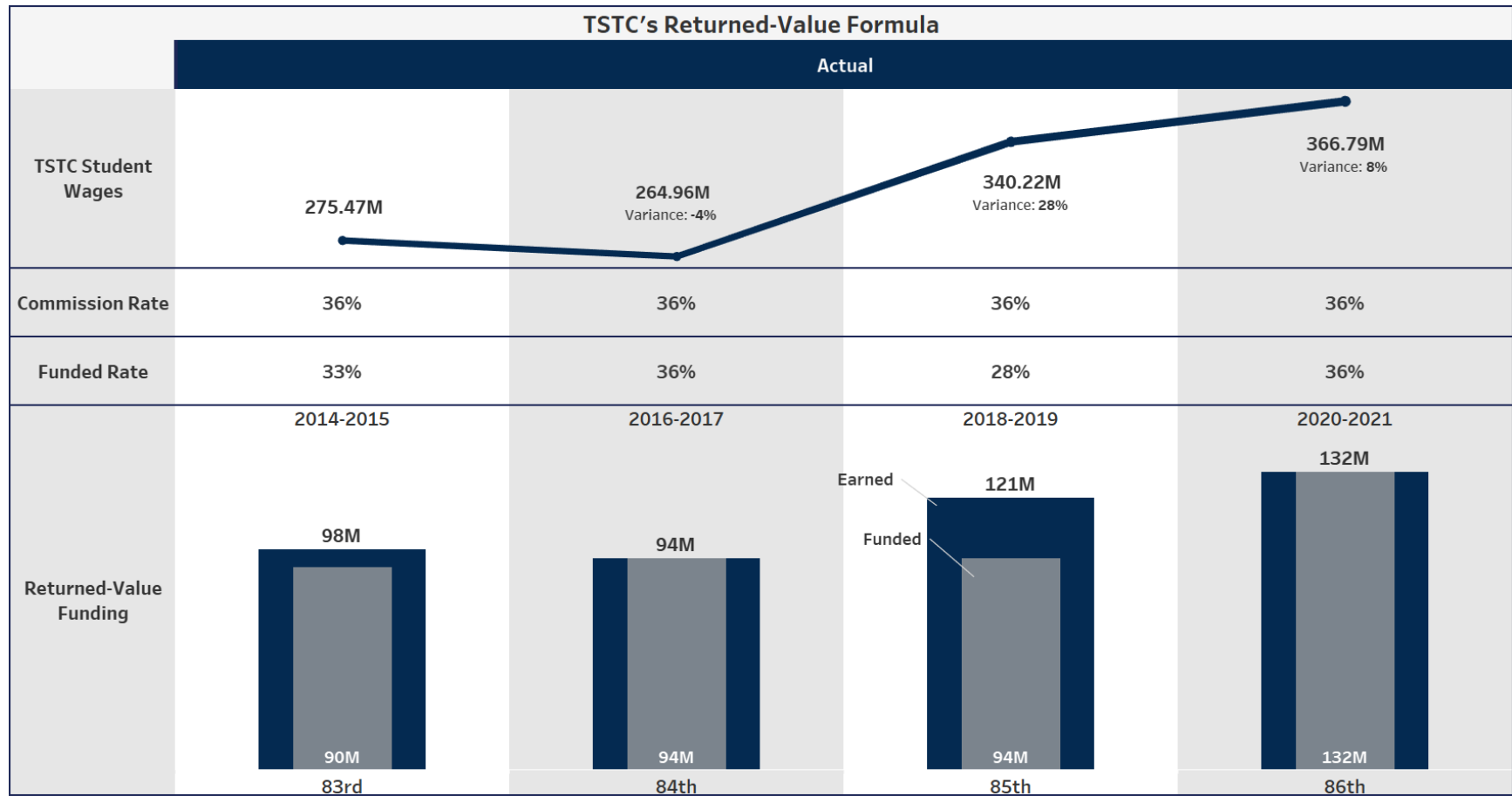
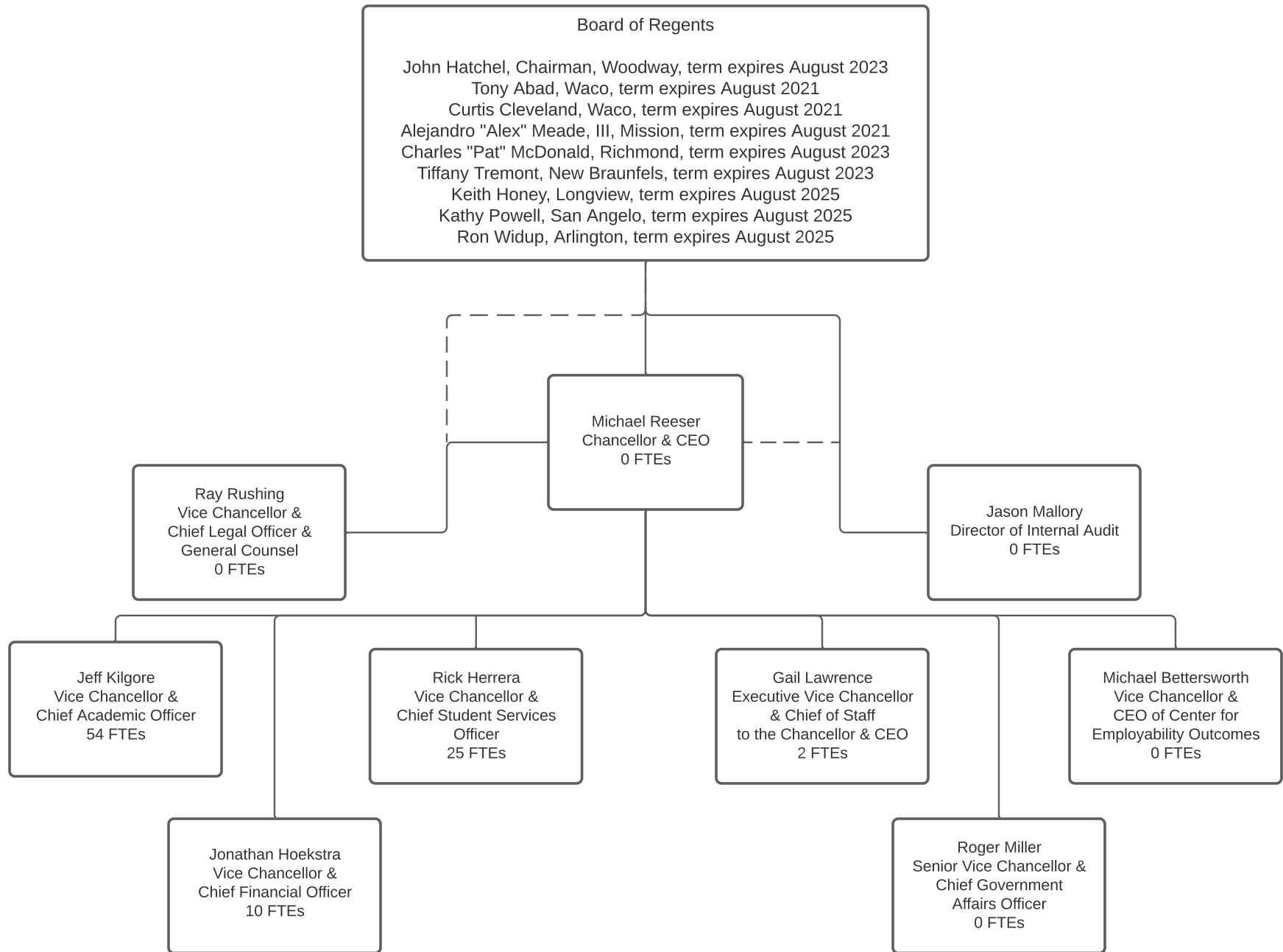


Figure 2:



Figure 3:







CERTIFICATE

Agency Name Texas State Technical College

This is to certify that the information contained in the agency Legislative Appropriation Request filed with the Legislative Budget Board (LBB) and the Governor's Office Budget Division (Governor's Office) is accurate to the best of my knowledge and that the electronic submission to the LBB via the Automated Budget and Evaluation System of Texas (ABEST) and the PDF file submitted via the LBB Document Submission application are identical.

Additionally, should it become likely at any time that unexpended balances will accrue for any account, the LBB and the Governor's Office will be notified in writing in accordance with Article IX, Section 7.01 (2020–21 GAA).

Chief Executive Officer or Presiding Judge

Board or Commission Chair

Signature

Signature

Printed Name

Printed Name

Title

Title

Date

Date

Chief Financial Officer



Signature

Jonathan Hoekstra
Printed Name

Vice Chancellor and Chief Financial Officer
Title

September 17, 2020
Date

Budget Overview - Biennial Amounts
87th Regular Session, Agency Submission, Version 1
Automated Budget and Evaluation System of Texas (ABEST)

71E Texas State Technical College - Marshall
Appropriation Years: 2022-23

	GENERAL REVENUE FUNDS		GR DEDICATED		FEDERAL FUNDS		OTHER FUNDS		ALL FUNDS		EXCEPTIONAL ITEM FUNDS
	2020-21	2022-23	2020-21	2022-23	2020-21	2022-23	2020-21	2022-23	2020-21	2022-23	2022-23
Goal: 1. Provide Instructional and Operations Support											
1.1.1. Instruction And Administration	7,041,130		184,391						7,225,521		
1.1.3. Staff Group Insurance Premiums	60,670		96,565	170,899					157,235	170,899	
1.1.4. Workers' Compensation Insurance	10,000	9,500	40,400						50,400	9,500	
1.1.6. Texas Public Education Grants			91,260	99,237					91,260	99,237	
1.1.7. Dual Credit	200,000	190,000	102,946						302,946	190,000	
Total, Goal	7,311,800	199,500	515,562	270,136					7,827,362	469,636	
Goal: 2. Provide Infrastructure Support											
2.1.1. E&G Space Support	742,872		(72,373)						670,499		
2.1.2. Tuition Revenue Bond Retirement	252,943	126,616							252,943	126,616	2,615,536
2.1.5. Small Institution Supplement	1,316,566		(142,418)						1,174,148		
Total, Goal	2,312,381	126,616	(214,791)						2,097,590	126,616	2,615,536
Goal: 3. Provide Non-formula Support											
3.4.1. Institutional Enhancement	1,095,949	1,041,152	105,073						1,201,022	1,041,152	
3.5.1. Exceptional Item Request											65,296
Total, Goal	1,095,949	1,041,152	105,073						1,201,022	1,041,152	65,296
Total, Agency	10,720,130	1,367,268	405,844	270,136					11,125,974	1,637,404	2,680,832
Total FTEs									82.6	82.6	0.0

2.A. Summary of Base Request by Strategy

11/4/2020 11:33:23AM

87th Regular Session, Agency Submission, Version 1

Automated Budget and Evaluation System of Texas (ABEST)

71E Texas State Technical College - Marshall

Goal / Objective / STRATEGY	Exp 2019	Est 2020	Bud 2021	Req 2022	Req 2023
1 Provide Instructional and Operations Support					
1 <i>Provide Instructional and Operations Support</i>					
1 INSTRUCTION AND ADMINISTRATION (1)	2,778,536	3,866,202	3,359,319	0	0
3 STAFF GROUP INSURANCE PREMIUMS	73,884	75,858	81,377	84,030	86,869
4 WORKERS' COMPENSATION INSURANCE	7,447	25,200	25,200	4,750	4,750
6 TEXAS PUBLIC EDUCATION GRANTS	42,434	43,799	47,461	48,885	50,352
7 DUAL CREDIT	0	119,146	183,800	95,000	95,000
TOTAL, GOAL 1	\$2,902,301	\$4,130,205	\$3,697,157	\$232,665	\$236,971
2 Provide Infrastructure Support					
1 <i>Provide Operation and Maintenance of E&G Space</i>					
1 E&G SPACE SUPPORT (1)	269,282	317,663	352,836	0	0
2 TUITION REVENUE BOND RETIREMENT	126,615	126,328	126,615	126,616	0
5 SMALL INSTITUTION SUPPLEMENT (1)	406,909	629,708	544,440	0	0

(1) - Formula funded strategies are not requested in 2022-23 because amounts are not determined by institutions.

2.A. Summary of Base Request by Strategy

11/4/2020 11:33:23AM

87th Regular Session, Agency Submission, Version 1

Automated Budget and Evaluation System of Texas (ABEST)

71E Texas State Technical College - Marshall

Goal / Objective / STRATEGY		Exp 2019	Est 2020	Bud 2021	Req 2022	Req 2023
TOTAL, GOAL	2	\$802,806	\$1,073,699	\$1,023,891	\$126,616	\$0
3 Provide Non-formula Support						
4 Institutional						
1 INSTITUTIONAL ENHANCEMENT		982,346	548,136	652,886	520,576	520,576
5 Exceptional Item Request						
1 EXCEPTIONAL ITEM REQUEST		0	0	0	0	0
TOTAL, GOAL	3	\$982,346	\$548,136	\$652,886	\$520,576	\$520,576
TOTAL, AGENCY STRATEGY REQUEST		\$4,687,453	\$5,752,040	\$5,373,934	\$879,857	\$757,547
TOTAL, AGENCY RIDER APPROPRIATIONS REQUEST*					\$0	\$0
GRAND TOTAL, AGENCY REQUEST		\$4,687,453	\$5,752,040	\$5,373,934	\$879,857	\$757,547

2.A. Summary of Base Request by Strategy

11/4/2020 11:33:23AM

87th Regular Session, Agency Submission, Version 1

Automated Budget and Evaluation System of Texas (ABEST)

71E Texas State Technical College - Marshall

Goal / Objective / STRATEGY	Exp 2019	Est 2020	Bud 2021	Req 2022	Req 2023
<u>METHOD OF FINANCING:</u>					
General Revenue Funds:					
1 General Revenue Fund	4,627,722	5,556,685	5,163,445	746,942	620,326
SUBTOTAL	\$4,627,722	\$5,556,685	\$5,163,445	\$746,942	\$620,326
General Revenue Dedicated Funds:					
770 Est. Other Educational & General	59,731	195,355	210,489	132,915	137,221
SUBTOTAL	\$59,731	\$195,355	\$210,489	\$132,915	\$137,221
TOTAL, METHOD OF FINANCING	\$4,687,453	\$5,752,040	\$5,373,934	\$879,857	\$757,547

*Rider appropriations for the historical years are included in the strategy amounts.

2.B. Summary of Base Request by Method of Finance

11/4/2020 11:33:23AM

87th Regular Session, Agency Submission, Version 1

Automated Budget and Evaluation System of Texas (ABEST)

Agency code: **71E**

Agency name: **Texas State Technical College - Marshall**

METHOD OF FINANCING	Exp 2019	Est 2020	Bud 2021	Req 2022	Req 2023
<u>GENERAL REVENUE</u>					
<u>1</u> General Revenue Fund					
<i>REGULAR APPROPRIATIONS</i>					
Regular Appropriations from MOF Table (2018-19 GAA)	\$5,857,633	\$0	\$0	\$0	\$0
Regular Appropriations from MOF Table (2020-21 GAA)	\$0	\$6,556,685	\$6,555,047	\$0	\$0
Regular Appropriations from MOF Table (2022-23 GAA)	\$0	\$0	\$0	\$746,942	\$620,326
<i>TRANSFERS</i>					
Administrative - From Marshall to System	\$(1,227,681)	\$0	\$0	\$0	\$0
Administrative - From Marshall to Harlingen	\$(2,230)	\$0	\$0	\$0	\$0
Administrative - From Marshall to Fort Bend	\$0	\$(1,000,000)	\$0	\$0	\$0

2.B. Summary of Base Request by Method of Finance

11/4/2020 11:33:23AM

87th Regular Session, Agency Submission, Version 1

Automated Budget and Evaluation System of Texas (ABEST)

Agency code: **71E**Agency name: **Texas State Technical College - Marshall**

METHOD OF FINANCING		Exp 2019	Est 2020	Bud 2021	Req 2022	Req 2023
<u>GENERAL REVENUE</u>						
Administrative - From Marshall to System		\$0	\$0	\$(826,831)	\$0	\$0
Administrative - From Marshall to West TX		\$0	\$0	\$(564,771)	\$0	\$0
TOTAL,	General Revenue Fund	\$4,627,722	\$5,556,685	\$5,163,445	\$746,942	\$620,326
TOTAL, ALL	GENERAL REVENUE	\$4,627,722	\$5,556,685	\$5,163,445	\$746,942	\$620,326

GENERAL REVENUE FUND - DEDICATED**770** GR Dedicated - Estimated Other Educational and General Income Account No. 770*REGULAR APPROPRIATIONS*

Regular Appropriations from MOF Table (2018-19 GAA)

\$1,933,655	\$0	\$0	\$0	\$0
-------------	-----	-----	-----	-----

Regular Appropriations from MOF Table (2020-21 GAA)

\$0	\$195,963	\$217,598	\$0	\$0
-----	-----------	-----------	-----	-----

2.B. Summary of Base Request by Method of Finance

11/4/2020 11:33:23AM

87th Regular Session, Agency Submission, Version 1

Automated Budget and Evaluation System of Texas (ABEST)

Agency code: 71E		Agency name: Texas State Technical College - Marshall				
METHOD OF FINANCING		Exp 2019	Est 2020	Bud 2021	Req 2022	Req 2023
<u>GENERAL REVENUE FUND - DEDICATED</u>						
Regular Appropriations from MOF Table (2022-23 GAA)		\$0	\$0	\$0	\$132,915	\$137,221
<i>BASE ADJUSTMENT</i>						
Revised Receipts		\$(1,648,281)	\$109,240	\$101,841	\$0	\$0
Comments: The large adjustment to revised receipts for 2019 is due to the changes made beginning (Fall 2017) 09/01/2017 in TSTC's tuition structure. State tuition was an average of about \$120 per semester credit hour and changed to \$16 per semester credit hour. Designated tuition was \$46 per semester credit hour and changed to an average of about \$150 per semester credit hour.						
Adjustments to Expended		\$(225,643)	\$(109,848)	\$(108,950)	\$0	\$0
TOTAL,	GR Dedicated - Estimated Other Educational and General Income Account No. 770	\$59,731	\$195,355	\$210,489	\$132,915	\$137,221
TOTAL GENERAL REVENUE FUND - DEDICATED - 704, 708 & 770		\$59,731	\$195,355	\$210,489	\$132,915	\$137,221
TOTAL, ALL	GENERAL REVENUE FUND - DEDICATED	\$59,731	\$195,355	\$210,489	\$132,915	\$137,221

2.B. Summary of Base Request by Method of Finance

11/4/2020 11:33:23AM

87th Regular Session, Agency Submission, Version 1

Automated Budget and Evaluation System of Texas (ABEST)

Agency code: 71E		Agency name: Texas State Technical College - Marshall				
METHOD OF FINANCING		Exp 2019	Est 2020	Bud 2021	Req 2022	Req 2023
TOTAL, GR & GR-DEDICATED FUNDS		\$4,687,453	\$5,752,040	\$5,373,934	\$879,857	\$757,547
GRAND TOTAL		\$4,687,453	\$5,752,040	\$5,373,934	\$879,857	\$757,547
FULL-TIME-EQUIVALENT POSITIONS						
REGULAR APPROPRIATIONS						
Regular Appropriations from MOF Table (2018-19 GAA)		146.1	0.0	0.0	0.0	0.0
Regular Appropriations from MOF Table (2020-21 GAA)		0.0	102.6	102.6	102.6	102.6
RIDER APPROPRIATION						
Art IX, Sec 6.10(a)(2), Board or Administrator FTE Adjustment (2018-19 GAA)		(14.6)	0.0	0.0	0.0	0.0
Art IX, Sec 6.10(a)(2), Board or Administrator FTE Adjustment (2020-21 GAA)		0.0	(10.3)	(10.3)	(10.3)	(10.3)
UNAUTHORIZED NUMBER OVER (BELOW) CAP						
Unauthorized Below Cap		(47.1)	(9.7)	(9.7)	(9.7)	(9.7)
TOTAL, ADJUSTED FTES		84.4	82.6	82.6	82.6	82.6

2.B. Summary of Base Request by Method of Finance

11/4/2020 11:33:23AM

87th Regular Session, Agency Submission, Version 1

Automated Budget and Evaluation System of Texas (ABEST)

Agency code: **71E**Agency name: **Texas State Technical College - Marshall**

METHOD OF FINANCING	Exp 2019	Est 2020	Bud 2021	Req 2022	Req 2023
NUMBER OF 100% FEDERALLY FUNDED FTEs	0.0	0.0	0.0	0.0	0.0

2.C. Summary of Base Request by Object of Expense

11/4/2020 11:33:24AM

87th Regular Session, Agency Submission, Version 1
Automated Budget and Evaluation System of Texas (ABEST)**71E Texas State Technical College - Marshall**

OBJECT OF EXPENSE	Exp 2019	Est 2020	Bud 2021	BL 2022	BL 2023
1001 SALARIES AND WAGES	\$2,025,830	\$2,086,309	\$2,408,506	\$309,873	\$309,873
1002 OTHER PERSONNEL COSTS	\$107,901	\$117,814	\$79,500	\$46,917	\$49,756
1005 FACULTY SALARIES	\$1,985,293	\$2,329,535	\$2,514,569	\$299,091	\$299,091
2002 FUELS AND LUBRICANTS	\$16,795	\$0	\$0	\$0	\$0
2003 CONSUMABLE SUPPLIES	\$12,105	\$0	\$0	\$0	\$0
2004 UTILITIES	\$153,584	\$0	\$0	\$0	\$0
2006 RENT - BUILDING	\$64,026	\$0	\$0	\$0	\$0
2008 DEBT SERVICE	\$126,615	\$126,328	\$126,615	\$126,616	\$0
2009 OTHER OPERATING EXPENSE	\$152,870	\$1,048,255	\$197,283	\$48,475	\$48,475
3001 CLIENT SERVICES	\$42,434	\$43,799	\$47,461	\$48,885	\$50,352
OOE Total (Excluding Riders)	\$4,687,453	\$5,752,040	\$5,373,934	\$879,857	\$757,547
OOE Total (Riders)					
Grand Total	\$4,687,453	\$5,752,040	\$5,373,934	\$879,857	\$757,547

2.D. Summary of Base Request Objective Outcomes
87th Regular Session, Agency Submission, Version 1
Automated Budget and Evaluation system of Texas (ABEST)

11/4/2020 11:33:24AM

71E Texas State Technical College - Marshall

Goal/ Objective / Outcome		Exp 2019	Est 2020	Bud 2021	BL 2022	BL 2023
1	Provide Instructional and Operations Support					
	1 Provide Instructional and Operations Support					
KEY	1 % of 1st-time, Full-time, Deg or Cert-seeking Students Graduated 3yrs					
		44.00%	45.00%	45.00%	46.00%	47.00%
KEY	2 Number of Associate Degrees and Certificates Awarded Annually					
		175.00	170.00	177.00	178.00	182.00
KEY	3 Number of Minority Students Graduated Annually					
		54.00	57.00	61.00	65.00	69.00
KEY	4 # of Former TSTC Students Working after One Year of Not Attending TSTC					
		406.00	425.00	435.00	450.00	464.00
KEY	5 % of Former TSTC Students Working after One Year of Not Attending TSTC					
		70.00%	65.00%	68.00%	69.00%	69.00%
	6 Total Annual Salaries of Stds Wrkg after One Yr of Not Attending TSTC					
		11,704,168.00	11,996,772.00	12,296,692.00	12,604,109.00	12,919,212.00

2.E. Summary of Exceptional Items Request
87th Regular Session, Agency Submission, Version 1
Automated Budget and Evaluation System of Texas (ABEST)

DATE: 11/4/2020
TIME : 11:33:24AM

Agency code: 71E

Agency name: Texas State Technical College - Marshall

Priority	Item	2022			2023			Biennium	
		GR and GR/GR Dedicated	All Funds	FTEs	GR and GR Dedicated	All Funds	FTEs	GR and GR Dedicated	All Funds
1	Restore Non-Formula Reductions	\$32,648	\$32,648		\$32,648	\$32,648		\$65,296	\$65,296
2	Learning Center	\$1,307,768	\$1,307,768		\$1,307,768	\$1,307,768		\$2,615,536	\$2,615,536
Total, Exceptional Items Request		\$1,340,416	\$1,340,416		\$1,340,416	\$1,340,416		\$2,680,832	\$2,680,832
Method of Financing									
	General Revenue	\$1,340,416	\$1,340,416		\$1,340,416	\$1,340,416		\$2,680,832	\$2,680,832
	General Revenue - Dedicated								
	Federal Funds								
	Other Funds								
		\$1,340,416	\$1,340,416		\$1,340,416	\$1,340,416		\$2,680,832	\$2,680,832

Full Time Equivalent Positions

Number of 100% Federally Funded FTEs 0.0

2.F. Summary of Total Request by Strategy
87th Regular Session, Agency Submission, Version 1
Automated Budget and Evaluation System of Texas (ABEST)

DATE : 11/4/2020

TIME : 11:33:24AM

Agency code:	71E	Agency name:	Texas State Technical College - Marshall			
Goal/Objective/STRATEGY	Base 2022	Base 2023	Exceptional 2022	Exceptional 2023	Total Request 2022	Total Request 2023
1 Provide Instructional and Operations Support						
1 <i>Provide Instructional and Operations Support</i>						
1 INSTRUCTION AND ADMINISTRATION	\$0	\$0	\$0	\$0	\$0	\$0
3 STAFF GROUP INSURANCE PREMIUMS	84,030	86,869	0	0	84,030	86,869
4 WORKERS' COMPENSATION INSURANCE	4,750	4,750	0	0	4,750	4,750
6 TEXAS PUBLIC EDUCATION GRANTS	48,885	50,352	0	0	48,885	50,352
7 DUAL CREDIT	95,000	95,000	0	0	95,000	95,000
TOTAL, GOAL 1	\$232,665	\$236,971	\$0	\$0	\$232,665	\$236,971
2 Provide Infrastructure Support						
1 <i>Provide Operation and Maintenance of E&G Space</i>						
1 E&G SPACE SUPPORT	0	0	0	0	0	0
2 TUITION REVENUE BOND RETIREMENT	126,616	0	1,307,768	1,307,768	1,434,384	1,307,768
5 SMALL INSTITUTION SUPPLEMENT	0	0	0	0	0	0
TOTAL, GOAL 2	\$126,616	\$0	\$1,307,768	\$1,307,768	\$1,434,384	\$1,307,768

2.F. Summary of Total Request by Strategy
87th Regular Session, Agency Submission, Version 1
Automated Budget and Evaluation System of Texas (ABEST)

DATE : 11/4/2020
TIME : 11:33:24AM

Agency code: 71E	Agency name: Texas State Technical College - Marshall					
Goal/Objective/STRATEGY	Base 2022	Base 2023	Exceptional 2022	Exceptional 2023	Total Request 2022	Total Request 2023
3 Provide Non-formula Support						
4 Institutional						
1 INSTITUTIONAL ENHANCEMENT	\$520,576	\$520,576	\$0	\$0	\$520,576	\$520,576
5 Exceptional Item Request						
1 EXCEPTIONAL ITEM REQUEST	0	0	32,648	32,648	32,648	32,648
TOTAL, GOAL 3	\$520,576	\$520,576	\$32,648	\$32,648	\$553,224	\$553,224
TOTAL, AGENCY STRATEGY REQUEST	\$879,857	\$757,547	\$1,340,416	\$1,340,416	\$2,220,273	\$2,097,963
TOTAL, AGENCY RIDER APPROPRIATIONS REQUEST						
GRAND TOTAL, AGENCY REQUEST	\$879,857	\$757,547	\$1,340,416	\$1,340,416	\$2,220,273	\$2,097,963

2.F. Summary of Total Request by Strategy
87th Regular Session, Agency Submission, Version 1
Automated Budget and Evaluation System of Texas (ABEST)

DATE : 11/4/2020

TIME : 11:33:24AM

Agency code: 71E		Agency name: Texas State Technical College - Marshall					
Goal/Objective/STRATEGY		Base 2022	Base 2023	Exceptional 2022	Exceptional 2023	Total Request 2022	Total Request 2023
General Revenue Funds:							
1	General Revenue Fund	\$746,942	\$620,326	\$1,340,416	\$1,340,416	\$2,087,358	\$1,960,742
		\$746,942	\$620,326	\$1,340,416	\$1,340,416	\$2,087,358	\$1,960,742
General Revenue Dedicated Funds:							
770	Est. Other Educational & General	132,915	137,221	0	0	132,915	137,221
		\$132,915	\$137,221	\$0	\$0	\$132,915	\$137,221
TOTAL, METHOD OF FINANCING		\$879,857	\$757,547	\$1,340,416	\$1,340,416	\$2,220,273	\$2,097,963
FULL TIME EQUIVALENT POSITIONS		82.6	82.6	0.0	0.0	82.6	82.6

2.G. Summary of Total Request Objective Outcomes

87th Regular Session, Agency Submission, Version 1
Automated Budget and Evaluation system of Texas (ABEST)

Date : 11/4/2020
Time: 11:33:25AM

Agency code: 71E

Agency name: Texas State Technical College - Marshall

Goal/ Objective / Outcome

		BL 2022	BL 2023	Excp 2022	Excp 2023	Total Request 2022	Total Request 2023
1	Provide Instructional and Operations Support						
1	Provide Instructional and Operations Support						
KEY	1 % of 1st-time, Full-time, Deg or Cert-seeking Students Graduated 3yrs						
		46.00%	47.00%			46.00%	47.00%
KEY	2 Number of Associate Degrees and Certificates Awarded Annually						
		178.00	182.00			178.00	182.00
KEY	3 Number of Minority Students Graduated Annually						
		65.00	69.00			65.00	69.00
KEY	4 # of Former TSTC Students Working after One Year of Not Attending TSTC						
		450.00	464.00			450.00	464.00
KEY	5 % of Former TSTC Students Working after One Year of Not Attending TSTC						
		69.00%	69.00%			69.00%	69.00%
	6 Total Annual Salaries of Stds Wrkg after One Yr of Not Attending TSTC						
		12,604,109.00	12,919,212.00			12,604,109.00	12,919,212.00

3.A. Strategy Request
87th Regular Session, Agency Submission, Version 1
Automated Budget and Evaluation System of Texas (ABEST)

11/4/2020 11:33:25AM

71E Texas State Technical College - Marshall

GOAL: 1 Provide Instructional and Operations Support
OBJECTIVE: 1 Provide Instructional and Operations Support
STRATEGY: 1 Instruction and Administration

Service Categories:

Service: 19 Income: A.1 Age: B.3

CODE	DESCRIPTION	Exp 2019	Est 2020	Bud 2021	(1) BL 2022	(1) BL 2023
Output Measures:						
	1 Number of Contact Hours Taught Annually	366,676.00	318,768.00	321,956.00	325,175.00	328,427.00
	2 % Acad. Contact Hrs Completed Annually at the End of the Rptg Period	99.29 %	99.00 %	99.00 %	99.00 %	99.00 %
	3 Fall Headcount	587.00	628.00	910.00	634.00	641.00
	4 Number of Minority Students Enrolled Annually	321.00	362.00	371.00	513.00	518.00
KEY	5 Annual Headcount Enrollment	763.00	824.00	890.00	899.00	908.00
	6 Number of Semester Credit Hours Taught Annually	12,447.00	10,907.00	9,558.00	9,653.00	9,750.00
	7 % Semester Credit Hours Completed at the End of the Reporting Period	98.89 %	99.00 %	99.00 %	99.00 %	99.00 %
Efficiency Measures:						
KEY	1 Administrative Cost as a Percent of Operating Budget	12.53 %	11.59 %	13.10 %	13.10 %	13.10 %
Objects of Expense:						
1001	SALARIES AND WAGES	\$1,381,590	\$1,334,473	\$1,645,888	\$0	\$0
1002	OTHER PERSONNEL COSTS	\$52,550	\$64,559	\$26,420	\$0	\$0
1005	FACULTY SALARIES	\$1,343,703	\$1,573,101	\$1,559,845	\$0	\$0
2009	OTHER OPERATING EXPENSE	\$693	\$894,069	\$127,166	\$0	\$0
TOTAL, OBJECT OF EXPENSE		\$2,778,536	\$3,866,202	\$3,359,319	\$0	\$0

(1) - Formula funded strategies are not requested in 2022-23 because amounts are not determined by institutions.

71E Texas State Technical College - Marshall

GOAL: 1 Provide Instructional and Operations Support
OBJECTIVE: 1 Provide Instructional and Operations Support
STRATEGY: 1 Instruction and Administration

Service Categories:

Service: 19 Income: A.1 Age: B.3

CODE	DESCRIPTION	Exp 2019	Est 2020	Bud 2021	BL 2022 ⁽¹⁾	BL 2023 ⁽¹⁾
Method of Financing:						
1	General Revenue Fund	\$3,238,031	\$3,716,366	\$3,324,764	\$0	\$0
SUBTOTAL, MOF (GENERAL REVENUE FUNDS)		\$3,238,031	\$3,716,366	\$3,324,764	\$0	\$0
Method of Financing:						
770	Est. Other Educational & General	\$(459,495)	\$149,836	\$34,555	\$0	\$0
SUBTOTAL, MOF (GENERAL REVENUE FUNDS - DEDICATED)		\$(459,495)	\$149,836	\$34,555	\$0	\$0
TOTAL, METHOD OF FINANCE (INCLUDING RIDERS)					\$0	\$0
TOTAL, METHOD OF FINANCE (EXCLUDING RIDERS)		\$2,778,536	\$3,866,202	\$3,359,319	\$0	\$0
FULL TIME EQUIVALENT POSITIONS:		55.8	54.6	54.6	54.6	54.6

STRATEGY DESCRIPTION AND JUSTIFICATION:

In the General Appropriations Act, HB 1, 84th Texas Legislature, Section 11 (page III-224), allocated funding under the Instruction & Operations strategy among Texas State Technical Colleges (TSTC) based on the additional direct and indirect state tax revenues generated as a result of the education provided. This formula furthers the goal of rewarding job placement and graduate earnings projections, not time in training or contact hours. This funding facilitates the provision of industry standard, state-of-the-art education and training in high priority careers.

(1) - Formula funded strategies are not requested in 2022-23 because amounts are not determined by institutions.

71E Texas State Technical College - Marshall

GOAL: 1 Provide Instructional and Operations Support
OBJECTIVE: 1 Provide Instructional and Operations Support
STRATEGY: 1 Instruction and Administration

Service Categories:

Service: 19 Income: A.1 Age: B.3

CODE	DESCRIPTION	Exp 2019	Est 2020	Bud 2021	BL 2022 ⁽¹⁾	BL 2023 ⁽¹⁾
------	-------------	----------	----------	----------	------------------------	------------------------

EXTERNAL/INTERNAL FACTORS IMPACTING STRATEGY:

Texas businesses in key industries are unable to find enough sufficiently trained workers to fill available, middle-skill jobs (those which require credentials between high school and a four-year college degree). Consequently, many Texas employers are left unable to grow and innovate, restricting their ability to compete in the current economy. This growing need for workers in middle-skill occupations is concentrated in the STEM fields, TSTC's primary focus. According to the U.S. Census Bureau, Harrison County has experienced slight population growth in recent years.

EXPLANATION OF BIENNIAL CHANGE (includes Rider amounts):

<u>STRATEGY BIENNIAL TOTAL - ALL FUNDS</u>		<u>BIENNIAL</u>	<u>EXPLANATION OF BIENNIAL CHANGE</u>	
Base Spending (Est 2020 + Bud 2021)	Baseline Request (BL 2022 + BL 2023)	CHANGE	\$ Amount	Explanation(s) of Amount (must specify MOFs and FTEs)
\$7,225,521	\$0	\$(7,225,521)	\$(7,225,521)	Formula funding for FY2022 and FY2023.
			\$(7,225,521)	Total of Explanation of Biennial Change

(1) - Formula funded strategies are not requested in 2022-23 because amounts are not determined by institutions.

71E Texas State Technical College - Marshall

GOAL: 1 Provide Instructional and Operations Support
OBJECTIVE: 1 Provide Instructional and Operations Support
STRATEGY: 3 Staff Group Insurance Premiums

Service Categories:

Service: 06 Income: A.2 Age: B.3

CODE	DESCRIPTION	Exp 2019	Est 2020	Bud 2021	BL 2022	BL 2023
Objects of Expense:						
1002	OTHER PERSONNEL COSTS	\$37,062	\$35,782	\$37,900	\$40,553	\$43,392
2009	OTHER OPERATING EXPENSE	\$36,822	\$40,076	\$43,477	\$43,477	\$43,477
TOTAL, OBJECT OF EXPENSE		\$73,884	\$75,858	\$81,377	\$84,030	\$86,869
Method of Financing:						
1	General Revenue Fund	\$27,084	\$30,335	\$30,335	\$0	\$0
SUBTOTAL, MOF (GENERAL REVENUE FUNDS)		\$27,084	\$30,335	\$30,335	\$0	\$0
Method of Financing:						
770	Est. Other Educational & General	\$46,800	\$45,523	\$51,042	\$84,030	\$86,869
SUBTOTAL, MOF (GENERAL REVENUE FUNDS - DEDICATED)		\$46,800	\$45,523	\$51,042	\$84,030	\$86,869
TOTAL, METHOD OF FINANCE (INCLUDING RIDERS)					\$84,030	\$86,869
TOTAL, METHOD OF FINANCE (EXCLUDING RIDERS)		\$73,884	\$75,858	\$81,377	\$84,030	\$86,869
FULL TIME EQUIVALENT POSITIONS:						

71E Texas State Technical College - Marshall

GOAL: 1 Provide Instructional and Operations Support
OBJECTIVE: 1 Provide Instructional and Operations Support
STRATEGY: 3 Staff Group Insurance Premiums

Service Categories:

Service: 06 Income: A.2 Age: B.3

CODE	DESCRIPTION	Exp 2019	Est 2020	Bud 2021	BL 2022	BL 2023
------	-------------	----------	----------	----------	---------	---------

STRATEGY DESCRIPTION AND JUSTIFICATION:

This strategy is to provide the proportional share of staff group insurance premiums paid from Other Educational and General Funds.

EXTERNAL/INTERNAL FACTORS IMPACTING STRATEGY:

Strategy is impacted by the number of employees working 30 hours or more per week and premium rates. Strategy based upon percentage of estimated other E & G income to total appropriation. There is a general revenue shortfall for group insurance; therefore, other strategies must supplement group insurance expenditures.

EXPLANATION OF BIENNIAL CHANGE (includes Rider amounts):

<u>STRATEGY BIENNIAL TOTAL - ALL FUNDS</u>		<u>BIENNIAL CHANGE</u>	<u>EXPLANATION OF BIENNIAL CHANGE</u>	
<u>Base Spending (Est 2020 + Bud 2021)</u>	<u>Baseline Request (BL 2022 + BL 2023)</u>		<u>\$ Amount</u>	<u>Explanation(s) of Amount (must specify MOFs and FTEs)</u>
\$157,235	\$170,899	\$13,664	\$13,664	Increase in group insurance premiums. MOF-Other E&G. FTEs-0.
			\$13,664	Total of Explanation of Biennial Change

71E Texas State Technical College - Marshall

GOAL: 1 Provide Instructional and Operations Support
OBJECTIVE: 1 Provide Instructional and Operations Support
STRATEGY: 4 Workers' Compensation Insurance

Service Categories:

Service: 06 Income: A.2 Age: B.3

CODE	DESCRIPTION	Exp 2019	Est 2020	Bud 2021	BL 2022	BL 2023
Objects of Expense:						
2009	OTHER OPERATING EXPENSE	\$7,447	\$25,200	\$25,200	\$4,750	\$4,750
TOTAL, OBJECT OF EXPENSE		\$7,447	\$25,200	\$25,200	\$4,750	\$4,750
Method of Financing:						
1	General Revenue Fund	\$5,000	\$5,000	\$5,000	\$4,750	\$4,750
SUBTOTAL, MOF (GENERAL REVENUE FUNDS)		\$5,000	\$5,000	\$5,000	\$4,750	\$4,750
Method of Financing:						
770	Est. Other Educational & General	\$2,447	\$20,200	\$20,200	\$0	\$0
SUBTOTAL, MOF (GENERAL REVENUE FUNDS - DEDICATED)		\$2,447	\$20,200	\$20,200	\$0	\$0
TOTAL, METHOD OF FINANCE (INCLUDING RIDERS)					\$4,750	\$4,750
TOTAL, METHOD OF FINANCE (EXCLUDING RIDERS)		\$7,447	\$25,200	\$25,200	\$4,750	\$4,750
FULL TIME EQUIVALENT POSITIONS:						

71E Texas State Technical College - Marshall

GOAL: 1 Provide Instructional and Operations Support
OBJECTIVE: 1 Provide Instructional and Operations Support
STRATEGY: 4 Workers' Compensation Insurance

Service Categories:

Service: 06 Income: A.2 Age: B.3

CODE	DESCRIPTION	Exp 2019	Est 2020	Bud 2021	BL 2022	BL 2023
------	-------------	----------	----------	----------	---------	---------

STRATEGY DESCRIPTION AND JUSTIFICATION:

This strategy funds the Worker's Compensation payments related to Education and General funds.

EXTERNAL/INTERNAL FACTORS IMPACTING STRATEGY:

Changes in workers' compensation are related to payroll costs, number of employees and workers' compensation claims.

EXPLANATION OF BIENNIAL CHANGE (includes Rider amounts):

<u>STRATEGY BIENNIAL TOTAL - ALL FUNDS</u>		<u>BIENNIAL CHANGE</u>	<u>EXPLANATION OF BIENNIAL CHANGE</u>	
<u>Base Spending (Est 2020 + Bud 2021)</u>	<u>Baseline Request (BL 2022 + BL 2023)</u>		<u>\$ Amount</u>	<u>Explanation(s) of Amount (must specify MOFs and FTEs)</u>
\$50,400	\$9,500	\$(40,900)	\$(40,400)	GR amount request only for FY2022-23. MOF-Other E&G. FTEs-0.
			\$(500)	2022 and 2023 are impacted by the 5% reduction.
			\$(40,900)	Total of Explanation of Biennial Change

71E Texas State Technical College - Marshall

GOAL: 1 Provide Instructional and Operations Support
OBJECTIVE: 1 Provide Instructional and Operations Support
STRATEGY: 6 Texas Public Education Grants

Service Categories:

Service: 20 Income: A.1 Age: B.3

CODE	DESCRIPTION	Exp 2019	Est 2020	Bud 2021	BL 2022	BL 2023
Objects of Expense:						
3001	CLIENT SERVICES	\$42,434	\$43,799	\$47,461	\$48,885	\$50,352
TOTAL, OBJECT OF EXPENSE		\$42,434	\$43,799	\$47,461	\$48,885	\$50,352
Method of Financing:						
770	Est. Other Educational & General	\$42,434	\$43,799	\$47,461	\$48,885	\$50,352
SUBTOTAL, MOF (GENERAL REVENUE FUNDS - DEDICATED)		\$42,434	\$43,799	\$47,461	\$48,885	\$50,352
TOTAL, METHOD OF FINANCE (INCLUDING RIDERS)					\$48,885	\$50,352
TOTAL, METHOD OF FINANCE (EXCLUDING RIDERS)		\$42,434	\$43,799	\$47,461	\$48,885	\$50,352

FULL TIME EQUIVALENT POSITIONS:

STRATEGY DESCRIPTION AND JUSTIFICATION:

This strategy represents tuition set aside for the Texas Public Education Grants program as required by Section 56.033 of the Texas Education Code.

EXTERNAL/INTERNAL FACTORS IMPACTING STRATEGY:

Change in enrollment.

71E Texas State Technical College - Marshall

GOAL: 1 Provide Instructional and Operations Support
OBJECTIVE: 1 Provide Instructional and Operations Support
STRATEGY: 6 Texas Public Education Grants

Service Categories:

Service: 20 Income: A.1 Age: B.3

CODE	DESCRIPTION	Exp 2019	Est 2020	Bud 2021	BL 2022	BL 2023
------	-------------	----------	----------	----------	---------	---------

EXPLANATION OF BIENNIAL CHANGE (includes Rider amounts):

<u>STRATEGY BIENNIAL TOTAL - ALL FUNDS</u>		<u>BIENNIAL CHANGE</u>	<u>EXPLANATION OF BIENNIAL CHANGE</u>	
Base Spending (Est 2020 + Bud 2021)	Baseline Request (BL 2022 + BL 2023)		\$ Amount	Explanation(s) of Amount (must specify MOFs and FTEs)
\$91,260	\$99,237	\$7,977	\$7,977	Increase in enrollment. MOF-Other E&G. FTEs-0.
			<u>\$7,977</u>	Total of Explanation of Biennial Change

71E Texas State Technical College - Marshall

GOAL: 1 Provide Instructional and Operations Support

OBJECTIVE: 1 Provide Instructional and Operations Support

STRATEGY: 7 Dual Credit Enrollment

Service Categories:

Service: 19 Income: A.2 Age: B.3

CODE	DESCRIPTION	Exp 2019	Est 2020	Bud 2021	BL 2022	BL 2023
Objects of Expense:						
1001	SALARIES AND WAGES	\$0	\$116,986	\$81,960	\$42,362	\$42,362
1002	OTHER PERSONNEL COSTS	\$0	\$1,680	\$1,360	\$703	\$703
1005	FACULTY SALARIES	\$0	\$0	\$100,000	\$51,687	\$51,687
2009	OTHER OPERATING EXPENSE	\$0	\$480	\$480	\$248	\$248
TOTAL, OBJECT OF EXPENSE		\$0	\$119,146	\$183,800	\$95,000	\$95,000
Method of Financing:						
1	General Revenue Fund	\$0	\$100,000	\$100,000	\$95,000	\$95,000
SUBTOTAL, MOF (GENERAL REVENUE FUNDS)		\$0	\$100,000	\$100,000	\$95,000	\$95,000
Method of Financing:						
770	Est. Other Educational & General	\$0	\$19,146	\$83,800	\$0	\$0
SUBTOTAL, MOF (GENERAL REVENUE FUNDS - DEDICATED)		\$0	\$19,146	\$83,800	\$0	\$0

71E Texas State Technical College - Marshall

GOAL: 1 Provide Instructional and Operations Support
OBJECTIVE: 1 Provide Instructional and Operations Support
STRATEGY: 7 Dual Credit Enrollment

Service Categories:

Service: 19 Income: A.2 Age: B.3

CODE	DESCRIPTION	Exp 2019	Est 2020	Bud 2021	BL 2022	BL 2023
TOTAL, METHOD OF FINANCE (INCLUDING RIDERS)					\$95,000	\$95,000
TOTAL, METHOD OF FINANCE (EXCLUDING RIDERS)		\$0	\$119,146	\$183,800	\$95,000	\$95,000

FULL TIME EQUIVALENT POSITIONS:

STRATEGY DESCRIPTION AND JUSTIFICATION:

The 86th Texas Legislature provided non-formula funding for dual credit enrollment. TSTC continues to offer dual credit programs with a specific emphasis on Career and Technical Education pathway programs.

If faced with lack of funding for dual credit programs, TSTC would have to assess the necessity to suspend, or considerably change the business model for dual credit offerings. The dual enrollment effort is extremely important to TSTC but it is an activity that requires significant resources of the College without the ability to recoup the costs without the non-formula funding.

This non-formula funding for dual credit programs allows TSTC in Marshall to continue and/or grow its dual credit program.

EXTERNAL/INTERNAL FACTORS IMPACTING STRATEGY:

TSTC in Marshall partners with several schools to offer dual credit at the secondary level.

71E Texas State Technical College - Marshall

GOAL: 1 Provide Instructional and Operations Support
OBJECTIVE: 1 Provide Instructional and Operations Support
STRATEGY: 7 Dual Credit Enrollment

Service Categories:

Service: 19 Income: A.2 Age: B.3

CODE	DESCRIPTION	Exp 2019	Est 2020	Bud 2021	BL 2022	BL 2023
------	-------------	----------	----------	----------	---------	---------

EXPLANATION OF BIENNIAL CHANGE (includes Rider amounts):

<u>STRATEGY BIENNIAL TOTAL - ALL FUNDS</u>		<u>BIENNIAL CHANGE</u>	<u>EXPLANATION OF BIENNIAL CHANGE</u>	
Base Spending (Est 2020 + Bud 2021)	Baseline Request (BL 2022 + BL 2023)		\$ Amount	Explanation(s) of Amount (must specify MOFs and FTEs)
\$302,946	\$190,000	\$(112,946)	\$(102,946)	Maintaining growth in dual credit program. MOF-Other E&G. FTEs-0.
			\$(10,000)	2022 and 2023 are impacted by the 5% reduction.
			\$(112,946)	Total of Explanation of Biennial Change

3.A. Strategy Request
87th Regular Session, Agency Submission, Version 1
Automated Budget and Evaluation System of Texas (ABEST)

11/4/2020 11:33:25AM

71E Texas State Technical College - Marshall

GOAL: 2 Provide Infrastructure Support
OBJECTIVE: 1 Provide Operation and Maintenance of E&G Space
STRATEGY: 1 Educational and General Space Support

Service Categories:

Service: 10 Income: A.1 Age: B.3

CODE	DESCRIPTION	Exp 2019	Est 2020	Bud 2021	(1) BL 2022	(1) BL 2023
Objects of Expense:						
1001	SALARIES AND WAGES	\$220,361	\$299,523	\$345,156	\$0	\$0
1002	OTHER PERSONNEL COSTS	\$4,414	\$7,180	\$6,720	\$0	\$0
2002	FUELS AND LUBRICANTS	\$178	\$0	\$0	\$0	\$0
2003	CONSUMABLE SUPPLIES	\$9,230	\$0	\$0	\$0	\$0
2004	UTILITIES	\$3,637	\$0	\$0	\$0	\$0
2009	OTHER OPERATING EXPENSE	\$31,462	\$10,960	\$960	\$0	\$0
TOTAL, OBJECT OF EXPENSE		\$269,282	\$317,663	\$352,836	\$0	\$0
Method of Financing:						
1	General Revenue Fund	\$308,018	\$372,398	\$370,474	\$0	\$0
SUBTOTAL, MOF (GENERAL REVENUE FUNDS)		\$308,018	\$372,398	\$370,474	\$0	\$0
Method of Financing:						
770	Est. Other Educational & General	\$(38,736)	\$(54,735)	\$(17,638)	\$0	\$0
SUBTOTAL, MOF (GENERAL REVENUE FUNDS - DEDICATED)		\$(38,736)	\$(54,735)	\$(17,638)	\$0	\$0

(1) - Formula funded strategies are not requested in 2022-23 because amounts are not determined by institutions.

71E Texas State Technical College - Marshall

GOAL: 2 Provide Infrastructure Support

OBJECTIVE: 1 Provide Operation and Maintenance of E&G Space

Service Categories:

STRATEGY: 1 Educational and General Space Support

Service: 10

Income: A.1

Age: B.3

CODE	DESCRIPTION	Exp 2019	Est 2020	Bud 2021	(1) BL 2022	(1) BL 2023
TOTAL, METHOD OF FINANCE (INCLUDING RIDERS)					\$0	\$0
TOTAL, METHOD OF FINANCE (EXCLUDING RIDERS)		\$269,282	\$317,663	\$352,836	\$0	\$0
FULL TIME EQUIVALENT POSITIONS:		8.7	7.5	7.5	7.5	7.5

STRATEGY DESCRIPTION AND JUSTIFICATION:

Funding for this strategy is determined through a formula that applies a funding rate to a determination of predicted square feet for an institution, the Space Projection Model. The Space Projection Model is generated through The Texas Higher Education Coordinating Board.

EXTERNAL/INTERNAL FACTORS IMPACTING STRATEGY:

House Bill 1 (General Appropriations Act), 84th Legislature, Regular Session, Article III, Higher Education Coordinating Board, Section 55 (p. III-54), directed the Texas Higher Education Coordinating Board (THECB) to conduct a study of the Space Projection Model.

The study conducted in response to Rider 55 treated the allocation of space for TSTC different than other institutions evaluated by dramatically increasing the allocation of teaching space for TSTC. This was validated as necessary by a third-party consultant who noted the space-intensive nature for TSTC training programs, relative to other spaces considered in the model.

During its formula funding development process, the Texas Higher Education Coordinating Board Formula Advisory Committee recommended incorporating Space Support funding into the Returned-Value formula to, as directed by the Legislature, further the goal of rewarding job placement and graduate earnings, not time in training or contact hours.

(1) - Formula funded strategies are not requested in 2022-23 because amounts are not determined by institutions.

3.A. Strategy Request
87th Regular Session, Agency Submission, Version 1
Automated Budget and Evaluation System of Texas (ABEST)

11/4/2020 11:33:25AM

71E Texas State Technical College - Marshall

GOAL: 2 Provide Infrastructure Support

OBJECTIVE: 1 Provide Operation and Maintenance of E&G Space

STRATEGY: 1 Educational and General Space Support

Service Categories:
Service: 10 Income: A.1 Age: B.3

CODE	DESCRIPTION	Exp 2019	Est 2020	Bud 2021	(1) BL 2022	(1) BL 2023
------	-------------	----------	----------	----------	----------------	----------------

EXPLANATION OF BIENNIAL CHANGE (includes Rider amounts):

<u>STRATEGY BIENNIAL TOTAL - ALL FUNDS</u>		<u>BIENNIAL CHANGE</u>	<u>EXPLANATION OF BIENNIAL CHANGE</u>	
Base Spending (Est 2020 + Bud 2021)	Baseline Request (BL 2022 + BL 2023)		\$ Amount	Explanation(s) of Amount (must specify MOFs and FTEs)
\$670,499	\$0	\$(670,499)	\$(670,499)	Formula funding for FY2022 and FY2023.
			\$(670,499)	Total of Explanation of Biennial Change

(1) - Formula funded strategies are not requested in 2022-23 because amounts are not determined by institutions.

71E Texas State Technical College - Marshall

GOAL: 2 Provide Infrastructure Support

OBJECTIVE: 1 Provide Operation and Maintenance of E&G Space

Service Categories:

STRATEGY: 2 Tuition Revenue Bond Retirement

Service: 10 Income: A.2 Age: B.3

CODE	DESCRIPTION	Exp 2019	Est 2020	Bud 2021	BL 2022	BL 2023
Objects of Expense:						
2008	DEBT SERVICE	\$126,615	\$126,328	\$126,615	\$126,616	\$0
TOTAL, OBJECT OF EXPENSE		\$126,615	\$126,328	\$126,615	\$126,616	\$0
Method of Financing:						
1	General Revenue Fund	\$126,615	\$126,328	\$126,615	\$126,616	\$0
SUBTOTAL, MOF (GENERAL REVENUE FUNDS)		\$126,615	\$126,328	\$126,615	\$126,616	\$0
TOTAL, METHOD OF FINANCE (INCLUDING RIDERS)					\$126,616	\$0
TOTAL, METHOD OF FINANCE (EXCLUDING RIDERS)		\$126,615	\$126,328	\$126,615	\$126,616	\$0

FULL TIME EQUIVALENT POSITIONS:

STRATEGY DESCRIPTION AND JUSTIFICATION:

This strategy is essential for the College to meet the annual debt service requirements for the Tuition Revenue Bonds issued during FY 2002, as authorized by the 77th Texas Legislature. The FY 2002 TRB issue was refinanced in FY 2016, lowering the debt service on that issue, thereby resulting in savings for the state.

EXTERNAL/INTERNAL FACTORS IMPACTING STRATEGY:

TRB funds used for remodeling have enabled the college to better serve the needs of our students in technical education.

3.A. Strategy Request
87th Regular Session, Agency Submission, Version 1
Automated Budget and Evaluation System of Texas (ABEST)

11/4/2020 11:33:25AM

71E Texas State Technical College - Marshall

GOAL: 2 Provide Infrastructure Support
OBJECTIVE: 1 Provide Operation and Maintenance of E&G Space
STRATEGY: 2 Tuition Revenue Bond Retirement

Service Categories:

Service: 10 Income: A.2 Age: B.3

CODE	DESCRIPTION	Exp 2019	Est 2020	Bud 2021	BL 2022	BL 2023
------	-------------	----------	----------	----------	---------	---------

EXPLANATION OF BIENNIAL CHANGE (includes Rider amounts):

<u>STRATEGY BIENNIAL TOTAL - ALL FUNDS</u>		<u>BIENNIAL CHANGE</u>	<u>EXPLANATION OF BIENNIAL CHANGE</u>	
<u>Base Spending (Est 2020 + Bud 2021)</u>	<u>Baseline Request (BL 2022 + BL 2023)</u>		<u>\$ Amount</u>	<u>Explanation(s) of Amount (must specify MOFs and FTEs)</u>
\$252,943	\$126,616	\$(126,327)	\$(126,327)	Decrease in TRB debt amount. MOF-GR. FTEs-0.
			<u>\$(126,327)</u>	Total of Explanation of Biennial Change

71E Texas State Technical College - Marshall

GOAL: 2 Provide Infrastructure Support

OBJECTIVE: 1 Provide Operation and Maintenance of E&G Space

STRATEGY: 5 Small Institution Supplement

Service Categories:

Service: 19

Income: A.1

Age: B.3

CODE	DESCRIPTION	Exp 2019	Est 2020	Bud 2021	(1) BL 2022	(1) BL 2023
Objects of Expense:						
1001	SALARIES AND WAGES	\$94,563	\$38,000	\$0	\$0	\$0
1002	OTHER PERSONNEL COSTS	\$2,435	\$956	\$0	\$0	\$0
1005	FACULTY SALARIES	\$0	\$513,282	\$544,440	\$0	\$0
2002	FUELS AND LUBRICANTS	\$16,617	\$0	\$0	\$0	\$0
2003	CONSUMABLE SUPPLIES	\$2,875	\$0	\$0	\$0	\$0
2004	UTILITIES	\$149,947	\$0	\$0	\$0	\$0
2006	RENT - BUILDING	\$64,026	\$0	\$0	\$0	\$0
2009	OTHER OPERATING EXPENSE	\$76,446	\$77,470	\$0	\$0	\$0
TOTAL, OBJECT OF EXPENSE		\$406,909	\$629,708	\$544,440	\$0	\$0
Method of Financing:						
1	General Revenue Fund	\$375,000	\$658,283	\$658,283	\$0	\$0
SUBTOTAL, MOF (GENERAL REVENUE FUNDS)		\$375,000	\$658,283	\$658,283	\$0	\$0
Method of Financing:						
770	Est. Other Educational & General	\$31,909	\$(28,575)	\$(113,843)	\$0	\$0
SUBTOTAL, MOF (GENERAL REVENUE FUNDS - DEDICATED)		\$31,909	\$(28,575)	\$(113,843)	\$0	\$0

(1) - Formula funded strategies are not requested in 2022-23 because amounts are not determined by institutions.

71E Texas State Technical College - Marshall

GOAL: 2 Provide Infrastructure Support
OBJECTIVE: 1 Provide Operation and Maintenance of E&G Space
STRATEGY: 5 Small Institution Supplement

Service Categories:
Service: 19 Income: A.1 Age: B.3

CODE	DESCRIPTION	Exp 2019	Est 2020	Bud 2021	BL 2022 ⁽¹⁾	BL 2023 ⁽¹⁾
TOTAL, METHOD OF FINANCE (INCLUDING RIDERS)					\$0	\$0
TOTAL, METHOD OF FINANCE (EXCLUDING RIDERS)		\$406,909	\$629,708	\$544,440	\$0	\$0
FULL TIME EQUIVALENT POSITIONS:		1.7	2.0	2.0	2.0	2.0

STRATEGY DESCRIPTION AND JUSTIFICATION:

The Small Institution Supplement strategy provides \$1,316,566 during a biennium for institutions that enroll less than 5,000 students (phased out between 5,000 and 10,000), recognizing that institutions have a minimum cost of operation that may not be covered by funds generated through the formulas.

EXTERNAL/INTERNAL FACTORS IMPACTING STRATEGY:

Utility costs.

EXPLANATION OF BIENNIAL CHANGE (includes Rider amounts):

<u>STRATEGY BIENNIAL TOTAL - ALL FUNDS</u>		<u>BIENNIAL CHANGE</u>	<u>EXPLANATION OF BIENNIAL CHANGE</u>	
<u>Base Spending (Est 2020 + Bud 2021)</u>	<u>Baseline Request (BL 2022 + BL 2023)</u>		<u>\$ Amount</u>	<u>Explanation(s) of Amount (must specify MOFs and FTEs)</u>
\$1,174,148	\$0	\$(1,174,148)	\$(1,174,148)	Formula funding for FY2022 and FY2023.
			\$(1,174,148)	Total of Explanation of Biennial Change

(1) - Formula funded strategies are not requested in 2022-23 because amounts are not determined by institutions.

71E Texas State Technical College - Marshall

GOAL: 3 Provide Non-formula Support

OBJECTIVE: 4 Institutional

STRATEGY: 1 Institutional Enhancement

Service Categories:

Service: 19

Income: A.2

Age: B.3

CODE	DESCRIPTION	Exp 2019	Est 2020	Bud 2021	BL 2022	BL 2023
Objects of Expense:						
1001	SALARIES AND WAGES	\$329,316	\$297,327	\$335,502	\$267,511	\$267,511
1002	OTHER PERSONNEL COSTS	\$11,440	\$7,657	\$7,100	\$5,661	\$5,661
1005	FACULTY SALARIES	\$641,590	\$243,152	\$310,284	\$247,404	\$247,404
TOTAL, OBJECT OF EXPENSE		\$982,346	\$548,136	\$652,886	\$520,576	\$520,576
Method of Financing:						
1	General Revenue Fund	\$547,974	\$547,975	\$547,974	\$520,576	\$520,576
SUBTOTAL, MOF (GENERAL REVENUE FUNDS)		\$547,974	\$547,975	\$547,974	\$520,576	\$520,576
Method of Financing:						
770	Est. Other Educational & General	\$434,372	\$161	\$104,912	\$0	\$0
SUBTOTAL, MOF (GENERAL REVENUE FUNDS - DEDICATED)		\$434,372	\$161	\$104,912	\$0	\$0
TOTAL, METHOD OF FINANCE (INCLUDING RIDERS)					\$520,576	\$520,576
TOTAL, METHOD OF FINANCE (EXCLUDING RIDERS)		\$982,346	\$548,136	\$652,886	\$520,576	\$520,576
FULL TIME EQUIVALENT POSITIONS:		18.2	18.5	18.5	18.5	18.5

71E Texas State Technical College - Marshall

GOAL: 3 Provide Non-formula Support
OBJECTIVE: 4 Institutional
STRATEGY: 1 Institutional Enhancement

Service Categories:

Service: 19 Income: A.2 Age: B.3

CODE	DESCRIPTION	Exp 2019	Est 2020	Bud 2021	BL 2022	BL 2023
------	-------------	----------	----------	----------	---------	---------

STRATEGY DESCRIPTION AND JUSTIFICATION:

The 76th Legislature created the initial Institutional Enhancement appropriation based on a consolidation of certain special item appropriations with inclusion of \$1.0 million per year to the strategy. This funding is an important source of funding for various E&G components.

For the 2022-2023 biennial budget, these funds will support educational support activities, instructional services, and student services.

EXTERNAL/INTERNAL FACTORS IMPACTING STRATEGY:

In the 2018-2019 biennium, this strategy was further reduced from the 2016-2017 levels, despite it funding core operations of the college. In light of the reduction, TSTC has implemented stringent reviews of programs and services to ensure that the investment of available dollars is made are programs and activities with the highest return potential. Based on the extent of cuts, TSTC has had to reduce and close services in its lowest performing and lowest potential markets.

EXPLANATION OF BIENNIAL CHANGE (includes Rider amounts):

<u>STRATEGY BIENNIAL TOTAL - ALL FUNDS</u>		<u>BIENNIAL CHANGE</u>	<u>EXPLANATION OF BIENNIAL CHANGE</u>	
<u>Base Spending (Est 2020 + Bud 2021)</u>	<u>Baseline Request (BL 2022 + BL 2023)</u>		<u>\$ Amount</u>	<u>Explanation(s) of Amount (must specify MOFs and FTEs)</u>
\$1,201,022	\$1,041,152	\$(159,870)	\$(105,073)	Reallocation of expenses to align with appropriations. MOF- Other E&G. FTEs-0.
			\$(54,797)	2022 and 2023 are impacted by the 5% reduction.
			\$(159,870)	Total of Explanation of Biennial Change

71E Texas State Technical College - Marshall

GOAL: 3 Provide Non-formula Support

OBJECTIVE: 5 Exceptional Item Request

STRATEGY: 1 Exceptional Item Request

Service Categories:

Service: 19

Income: A.2

Age: B.3

CODE	DESCRIPTION	Exp 2019	Est 2020	Bud 2021	BL 2022	BL 2023
Objects of Expense:						
2009	OTHER OPERATING EXPENSE	\$0	\$0	\$0	\$0	\$0
TOTAL, OBJECT OF EXPENSE		\$0	\$0	\$0	\$0	\$0
Method of Financing:						
1	General Revenue Fund	\$0	\$0	\$0	\$0	\$0
SUBTOTAL, MOF (GENERAL REVENUE FUNDS)		\$0	\$0	\$0	\$0	\$0
TOTAL, METHOD OF FINANCE (INCLUDING RIDERS)					\$0	\$0
TOTAL, METHOD OF FINANCE (EXCLUDING RIDERS)		\$0	\$0	\$0	\$0	\$0

FULL TIME EQUIVALENT POSITIONS:

STRATEGY DESCRIPTION AND JUSTIFICATION:

EXTERNAL/INTERNAL FACTORS IMPACTING STRATEGY:

71E Texas State Technical College - Marshall

GOAL: 3 Provide Non-formula Support
OBJECTIVE: 5 Exceptional Item Request
STRATEGY: 1 Exceptional Item Request

Service Categories:

Service: 19 Income: A.2 Age: B.3

CODE	DESCRIPTION	Exp 2019	Est 2020	Bud 2021	BL 2022	BL 2023
------	-------------	----------	----------	----------	---------	---------

EXPLANATION OF BIENNIAL CHANGE (includes Rider amounts):

<u>STRATEGY BIENNIAL TOTAL - ALL FUNDS</u>		<u>BIENNIAL CHANGE</u>	<u>EXPLANATION OF BIENNIAL CHANGE</u>	
Base Spending (Est 2020 + Bud 2021)	Baseline Request (BL 2022 + BL 2023)		\$ Amount	Explanation(s) of Amount (must specify MOFs and FTEs)
\$0	\$0	\$0		
			<u>\$0</u>	Total of Explanation of Biennial Change

3.A. Strategy Request

11/4/2020 11:33:25AM

87th Regular Session, Agency Submission, Version 1
Automated Budget and Evaluation System of Texas (ABEST)

SUMMARY TOTALS:

OBJECTS OF EXPENSE:	\$4,687,453	\$5,752,040	\$5,373,934	\$879,857	\$757,547
METHODS OF FINANCE (INCLUDING RIDERS):				\$879,857	\$757,547
METHODS OF FINANCE (EXCLUDING RIDERS):	\$4,687,453	\$5,752,040	\$5,373,934	\$879,857	\$757,547
FULL TIME EQUIVALENT POSITIONS:	84.4	82.6	82.6	82.6	82.6

3.A.1. PROGRAM-LEVEL REQUEST SCHEDULE
87th Regular Session, Agency Submission, Version 1

Agency Code: 71E		Agency: Texas State Technical College - Marshall			Prepared By:					
Date:		Program	Program Name	Legal Authority	2020-21 Base	Requested 2022	Requested 2023	Biennial Total 2022-23	Biennial Difference	
Strategy	Strategy Name	Priority							\$	%
1.1.1	Instruction and Administration	1	Instruction and Administration		\$7,225,521	\$0	\$0	\$0	(\$7,225,521)	-100.0
1.1.3	Staff Group Insurance Premiums	6	Staff Group Insurance Premiums		\$157,235	\$84,030	\$86,869	\$170,899	\$13,664	8.7
1.1.4	Workers' Compensation Insurance	9	Workers' Compensation Insurance		\$50,400	\$4,750	\$4,750	\$9,500	(\$40,900)	-81.2
1.1.6	Texas Public Education Grants	8	Texas Public Education Grants		\$91,260	\$48,885	\$50,352	\$99,237	\$7,977	8.7
1.1.7	Dual Credit Enrollment	7	Dual Credit Enrollment		\$302,946	\$183,800	\$183,800	\$367,600	\$64,654	21.3
2.1.1	Educational and General Space Support	2	Educational and General Space Support		\$670,499	\$0	\$0	\$0	(\$670,499)	-100.0
2.1.2	Tuition Revenue Bond Retirement	3	Tuition Revenue Bond Retirement		\$252,943	\$1,434,384	\$1,307,768	\$2,742,152	\$2,489,209	984.1
2.1.5	Small Institution Supplement	4	Small Institution Supplement		\$1,174,148	\$0	\$0	\$0	(\$1,174,148)	-100.0
3.4.1	Institutional Enhancement	5	Institutional Enhancement		\$1,201,022	\$652,886	\$652,886	\$1,305,772	\$104,750	8.7
3.5.1	Exceptional Item Request	10	Exceptional Item Request		\$0	\$32,648	\$32,648	\$65,296	\$65,296	100.0
Program Prioritization: Indicate the methodology or approach taken by the agency, court, or institution to determine the ranking of each program by priority.										

4.A. Exceptional Item Request Schedule
87th Regular Session, Agency Submission, Version 1
Automated Budget and Evaluation System of Texas (ABEST)

DATE: 11/4/2020
TIME: 11:33:40AM

Agency code: 71E

Agency name:

Texas State Technical College - Marshall

CODE	DESCRIPTION	Excp 2022	Excp 2023
------	-------------	-----------	-----------

Item Name: Restore Non-Formula Reductions

Item Priority: 1

IT Component: No

Anticipated Out-year Costs: Yes

Involve Contracts > \$50,000: No

Includes Funding for the Following Strategy or Strategies: 03-05-01 Exceptional Item Request

OBJECTS OF EXPENSE:

2009 OTHER OPERATING EXPENSE

32,648

32,648

TOTAL, OBJECT OF EXPENSE

\$32,648

\$32,648

METHOD OF FINANCING:

1 General Revenue Fund

32,648

32,648

TOTAL, METHOD OF FINANCING

\$32,648

\$32,648

DESCRIPTION / JUSTIFICATION:

Funds will be used to maintain current levels of service for instructional and student support.

EXTERNAL/INTERNAL FACTORS:

Consequences of not funding: Without the restoration of these funds, TSTC may be required to make faculty and staff reductions, and/or reduce instructional program offerings.

PCLS TRACKING KEY:

DESCRIPTION OF ANTICIPATED OUT-YEAR COSTS :

To maintain current funding levels

4.A. Exceptional Item Request Schedule
87th Regular Session, Agency Submission, Version 1
Automated Budget and Evaluation System of Texas (ABEST)

DATE: 11/4/2020
TIME: 11:33:40AM

Agency code: 71E

Agency name:

Texas State Technical College - Marshall

CODE DESCRIPTION

Excp 2022

Excp 2023

ESTIMATED ANTICIPATED OUT-YEAR COSTS FOR ITEM:

2024	2025	2026
\$32,648	\$32,648	\$32,648

4.A. Exceptional Item Request Schedule
87th Regular Session, Agency Submission, Version 1
Automated Budget and Evaluation System of Texas (ABEST)

DATE: 11/4/2020
TIME: 11:33:40AM

Agency code: 71E Agency name:
Texas State Technical College - Marshall

CODE	DESCRIPTION	Excp 2022	Excp 2023
<p style="text-align: right;"> Item Name: Industrial Technologies Performance Learning Center Item Priority: 2 IT Component: No Anticipated Out-year Costs: Yes Involve Contracts > \$50,000: No Includes Funding for the Following Strategy or Strategies: 02-01-02 Tuition Revenue Bond Retirement </p>			
OBJECTS OF EXPENSE:			
2008	DEBT SERVICE	1,307,768	1,307,768
TOTAL, OBJECT OF EXPENSE		\$1,307,768	\$1,307,768
METHOD OF FINANCING:			
1	General Revenue Fund	1,307,768	1,307,768
TOTAL, METHOD OF FINANCING		\$1,307,768	\$1,307,768

DESCRIPTION / JUSTIFICATION:

TSTC in Marshall requests funding to add or recapture lost instructional capacity by constructing 65,750 square feet of flexible, industrial technology and skilled trade training facilities. This space will be able to meet immediate demand in the areas of diesel and welding, but will be flexible to accommodate changes in the labor market to meet the needs of employers for decades to come. Tuition Revenue Bond Issuance Authority in the amount of \$15,000,000 is requested by TSTC Harlingen for this instructional facility. State funding is requested for projected debt service payment of \$1,307,768 for the FY 2022/2023 biennium. This is based upon an amortization of 20 years at 6.00%

EXTERNAL/INTERNAL FACTORS:

Consequences of not funding: Reduced capacity for reducing Texas' technical skills shortage.

PCLS TRACKING KEY:

DESCRIPTION OF ANTICIPATED OUT-YEAR COSTS :

Debt service for Tuition Revenue Bonds are set for the term of the bond, which is 20 years.

4.A. Exceptional Item Request Schedule
87th Regular Session, Agency Submission, Version 1
Automated Budget and Evaluation System of Texas (ABEST)

DATE: **11/4/2020**
TIME: **11:33:40AM**

Agency code: **71E**

Agency name:

Texas State Technical College - Marshall

CODE DESCRIPTION

Excp 2022

Excp 2023

ESTIMATED ANTICIPATED OUT-YEAR COSTS FOR ITEM:

2024	2025	2026
\$1,307,768	\$1,307,768	\$1,307,768

4.B. Exceptional Items Strategy Allocation Schedule
87th Regular Session, Agency Submission, Version 1
Automated Budget and Evaluation System of Texas (ABEST)

DATE: 11/4/2020
TIME: 11:33:41AM

Agency code: **71E** Agency name: **Texas State Technical College - Marshall**

Code	Description	Excp 2022	Excp 2023
Item Name: Restore Non-Formula Reductions			
Allocation to Strategy: 3-5-1 Exceptional Item Request			
OBJECTS OF EXPENSE:			
2009	OTHER OPERATING EXPENSE	32,648	32,648
TOTAL, OBJECT OF EXPENSE		\$32,648	\$32,648
METHOD OF FINANCING:			
1	General Revenue Fund	32,648	32,648
TOTAL, METHOD OF FINANCING		\$32,648	\$32,648

4.B. Exceptional Items Strategy Allocation Schedule
87th Regular Session, Agency Submission, Version 1
Automated Budget and Evaluation System of Texas (ABEST)

DATE: 11/4/2020
TIME: 11:33:41AM

Agency code: **71E** Agency name: **Texas State Technical College - Marshall**

Code	Description	Excp 2022	Excp 2023
Item Name: Industrial Technologies Performance Learning Center			
Allocation to Strategy: 2-1-2 Tuition Revenue Bond Retirement			
OBJECTS OF EXPENSE:			
2008	DEBT SERVICE	1,307,768	1,307,768
TOTAL, OBJECT OF EXPENSE		\$1,307,768	\$1,307,768
METHOD OF FINANCING:			
1	General Revenue Fund	1,307,768	1,307,768
TOTAL, METHOD OF FINANCING		\$1,307,768	\$1,307,768

4.C. Exceptional Items Strategy Request
87th Regular Session, Agency Submission, Version 1
Automated Budget and Evaluation System of Texas (ABEST)

DATE: 11/4/2020
TIME: 11:33:41AM

Agency Code: **71E** Agency name: **Texas State Technical College - Marshall**

GOAL: 2 Provide Infrastructure Support

OBJECTIVE: 1 Provide Operation and Maintenance of E&G Space

STRATEGY: 2 Tuition Revenue Bond Retirement

Service Categories:

Service: 10 Income: A.2 Age: B.3

CODE DESCRIPTION	Excp 2022	Excp 2023
------------------	-----------	-----------

OBJECTS OF EXPENSE:

2008 DEBT SERVICE	1,307,768	1,307,768
Total, Objects of Expense	\$1,307,768	\$1,307,768

METHOD OF FINANCING:

1 General Revenue Fund	1,307,768	1,307,768
Total, Method of Finance	\$1,307,768	\$1,307,768

EXCEPTIONAL ITEM(S) INCLUDED IN STRATEGY:

Industrial Technologies Performance Learning Center

4.C. Exceptional Items Strategy Request
87th Regular Session, Agency Submission, Version 1
Automated Budget and Evaluation System of Texas (ABEST)

DATE: 11/4/2020
TIME: 11:33:41AM

Agency Code: **71E** Agency name: **Texas State Technical College - Marshall**

GOAL: 3 Provide Non-formula Support

OBJECTIVE: 5 Exceptional Item Request

STRATEGY: 1 Exceptional Item Request

Service Categories:

Service: 19 Income: A.2 Age: B.3

CODE	DESCRIPTION	Excp 2022	Excp 2023
------	-------------	-----------	-----------

OBJECTS OF EXPENSE:

2009	OTHER OPERATING EXPENSE	32,648	32,648
Total, Objects of Expense		\$32,648	\$32,648

METHOD OF FINANCING:

1	General Revenue Fund	32,648	32,648
Total, Method of Finance		\$32,648	\$32,648

EXCEPTIONAL ITEM(S) INCLUDED IN STRATEGY:

Restore Non-Formula Reductions

General Revenue (GR) & General Revenue Dedicated (GR-D) Baseline

87th Regular Session, Agency Submission, Version 1
Automated Budget and Evaluation System of Texas (ABEST)

DATE: 11/4/2020

TIME: 11:33:41AM

Agency code: 71E

Agency name: Texas State Technical College - Marshall

GR Baseline Request Limit = \$1,240,652

GR-D Baseline Request Limit = \$0

Strategy/Strategy Option/Rider								Biennial	Biennial	Page #
2022 Funds				2023 Funds				Cumulative GR	Cumulative Ded	
FTEs	Total	GR	Ded	FTEs	Total	GR	Ded			
Strategy: 1 - 1 - 1	Instruction and Administration									
54.6	0	0	0	54.6	0	0	0	0	0	
54.6				54.6	*****GR-D Baseline Request Limit=\$0*****					
Strategy: 1 - 1 - 3	Staff Group Insurance Premiums									
0.0	84,030	0	84,030	0.0	86,869	0	86,869	0	170,899	
Strategy: 1 - 1 - 4	Workers' Compensation Insurance									
0.0	4,750	4,750	0	0.0	4,750	4,750	0	9,500	170,899	
Strategy: 1 - 1 - 6	Texas Public Education Grants									
0.0	48,885	0	48,885	0.0	50,352	0	50,352	9,500	270,136	
Strategy: 1 - 1 - 7	Dual Credit Enrollment									
0.0	95,000	95,000	0	0.0	95,000	95,000	0	199,500	270,136	
Strategy: 2 - 1 - 1	Educational and General Space Support									
7.5	0	0	0	7.5	0	0	0	199,500	270,136	
Strategy: 2 - 1 - 2	Tuition Revenue Bond Retirement									
0.0	126,616	126,616	0	0.0	0	0	0	326,116	270,136	
Strategy: 2 - 1 - 5	Small Institution Supplement									
2.0	0	0	0	2.0	0	0	0	326,116	270,136	
64.1				64.1	*****GR Baseline Request Limit=\$1,240,652*****					
Strategy: 3 - 4 - 1	Institutional Enhancement									
18.5	520,576	520,576	0	18.5	520,576	520,576	0	1,367,268	270,136	
Excp Item: 1	Restore Non-Formula Reductions									
0.0	32,648	32,648	0	0.0	32,648	32,648	0	1,432,564	270,136	

General Revenue (GR) & General Revenue Dedicated (GR-D) Baseline

87th Regular Session, Agency Submission, Version 1
Automated Budget and Evaluation System of Texas (ABEST)

DATE: 11/4/2020

TIME: 11:33:41AM

Agency code: 71E

Agency name: Texas State Technical College - Marshall

GR Baseline Request Limit = \$1,240,652

GR-D Baseline Request Limit = \$0

Strategy/Strategy Option/Rider								Biennial	Biennial	Page #
2022 Funds				2023 Funds				Cumulative GR	Cumulative Ded	
FTEs	Total	GR	Ded	FTEs	Total	GR	Ded			
Strategy Detail for Excp Item: 1										
Strategy: 3 - 5 - 1	Exceptional Item Request									
0.0	32,648	32,648	0	0.0	32,648	32,648	0			
Excp Item: 2	Industrial Technologies Performance Learning Center									
0.0	1,307,768	1,307,768	0	0.0	1,307,768	1,307,768	0	4,048,100	270,136	_____
Strategy Detail for Excp Item: 2										
Strategy: 2 - 1 - 2	Tuition Revenue Bond Retirement									
0.0	1,307,768	1,307,768	0	0.0	1,307,768	1,307,768	0			
82.6	\$2,220,273	\$2,087,358	\$132,915	82.6	\$2,097,963	\$1,960,742	137,221			

Agency Code: 71E Agency: Texas State Technical College - Marshall

COMPARISON TO STATEWIDE HUB PROCUREMENT GOALS

A. Fiscal Year - HUB Expenditure Information

Statewide HUB Goals	Procurement Category	<u>HUB Expenditures FY 2018</u>					Total Expenditures	<u>HUB Expenditures FY 2019</u>				Total Expenditures
		% Goal	% Actual	Diff	Actual \$	FY 2018	% Goal	% Actual	Diff	Actual \$	FY 2019	
11.2%	Heavy Construction	11.2 %	10.5%	-0.7%	\$27,055	\$257,309	11.2 %	1.5%	-9.7%	\$2,400	\$161,791	
21.1%	Building Construction	21.1 %	1.1%	-20.0%	\$133,733	\$12,691,594	21.1 %	4.4%	-16.7%	\$80,020	\$1,816,842	
32.9%	Special Trade	32.9 %	14.1%	-18.8%	\$408,525	\$2,905,248	32.9 %	13.3%	-19.6%	\$420,761	\$3,160,878	
23.7%	Professional Services	23.7 %	1.9%	-21.8%	\$79,733	\$4,250,646	23.7 %	3.0%	-20.7%	\$24,244	\$800,969	
26.0%	Other Services	26.0 %	19.8%	-6.2%	\$1,755,339	\$8,885,046	26.0 %	20.1%	-5.9%	\$1,719,005	\$8,534,685	
21.1%	Commodities	21.1 %	3.7%	-17.4%	\$591,140	\$15,910,672	21.1 %	3.6%	-17.5%	\$473,748	\$13,239,440	
	Total Expenditures		6.7%		\$2,995,525	\$44,900,515		9.8%		\$2,720,178	\$27,714,605	

B. Assessment of Fiscal Year - Efforts to Meet HUB Procurement Goals

Attainment:

The agency attained zero of six, or 0%, of the applicable statewide HUB procurement goals in FY 2018 and FY2019. The increase between FY 18 to FY 19 of total percentage spent with HUB

Applicability:

The agency had expenditures in all categories in both fiscal year.

Factors Affecting Attainment:

- The college routinely utilizes vendors that could qualify for HUB certification, but they have no direct incentive to complete the HUB certification steps. This creates a limited supply of "HUB certified" vendors.

"Good-Faith" Efforts:

The agency made the following good faith efforts to comply with statewide HUB procurement goals per 34 TAC Section 20.13(c):

- Developed and conducted training to TSTC community regarding HUB program, policies, and procedures
- Attended various vendors fairs, and other events to learn more about HUB programs
- Attended HUB discussion meetings to keep up with HUB Rules and Regulations
- Educated potential HUB vendors to apply for certification with the state
- Educated ESD is accessible to use for bidding processing
- TSTC is seeking new ways to education the College community on the benefits of doing business with HUBs

6.G. HOMELAND SECURITY FUNDING SCHEDULE - PART C - COVID-19 RELATED EXPENDITURES

DATE: 11/4/2020
TIME: 11:33:42AM

87th Regular Session, Agency Submission, Version 1
Automated Budget and Evaluation System of Texas (ABEST)

Agency code: 71E Agency name: TSTC - Marshall

CODE	DESCRIPTION	Exp 2019	Est 2020	Bud 2021	BL 2022	BL 2023
OBJECTS OF EXPENSE						
2003	CONSUMABLE SUPPLIES	\$0	\$54,907	\$19,179	\$0	\$0
2009	OTHER OPERATING EXPENSE	\$0	\$677	\$136,822	\$0	\$0
4000	GRANTS	\$0	\$155,225	\$63,772	\$0	\$0
5000	CAPITAL EXPENDITURES	\$0	\$75,600	\$75,600	\$0	\$0
TOTAL, OBJECTS OF EXPENSE		\$0	\$286,409	\$295,373	\$0	\$0
METHOD OF FINANCING						
997	Other Funds, estimated	\$0	\$7,387	\$19,179	\$0	\$0
	Subtotal, MOF (Other Funds)	\$0	\$7,387	\$19,179	\$0	\$0
325	CORONAVIRUS RELIEF FUND					
	CFDA 84.425.119, COV19 Education Stabilization Fund	\$0	\$279,022	\$276,194	\$0	\$0
	Subtotal, MOF (Federal Funds)	\$0	\$279,022	\$276,194	\$0	\$0
TOTAL, METHOD OF FINANCE		\$0	\$286,409	\$295,373	\$0	\$0
FULL-TIME-EQUIVALENT POSITIONS		0.0	39.0	39.0	0.0	0.0

NO FUNDS WERE PASSED THROUGH TO LOCAL ENTITIES

NO FUNDS WERE PASSED THROUGH TO OTHER STATE AGENCIES OR INSTITUTIONS OF HIGHER EDUCATION

USE OF HOMELAND SECURITY FUNDS

Majority of the funds were or will be awarded to students. Other uses include the purchase of supplies such as personal protective equipment (PPE) in order to follow proper CDC guidelines to fulfill in-person classes, improvement of information technology for the betterment of online classes, salaries of certain adjunct faculty, and some capital equipment.

6.H. Estimated Funds Outside the Institution's Bill Pattern

87th Regular Session, Agency Submission, Version 1

Automated Budget and Evaluation System of Texas (ABEST)

TSTC Marshall (71E)

Estimated Funds Outside the Institution's Bill Pattern

2020-21 and 2022-23 Biennia

	2020-21 Biennium				2022-23 Biennium			
	FY 2020 Revenue	FY 2021 Revenue	Biennium Total	Percent of Total	FY 2022 Revenue	FY 2023 Revenue	Biennium Total	Percent of Total
APPROPRIATED SOURCES INSIDE THE BILL PATTERN								
State Appropriations (excluding HEGI & State Paid Fringes)	\$ 5,556,685	\$ 5,163,445	\$ 10,720,130		\$ 5,163,445	\$ 5,163,445	\$ 10,326,890	
Tuition and Fees (net of Discounts and Allowances)	194,045	139,311	333,356		146,277	153,590	299,867	
Endowment and Interest Income	-	-	-		-	-	-	
Sales and Services of Educational Activities (net)	-	-	-		-	-	-	
Sales and Services of Hospitals (net)	-	-	-		-	-	-	
Other Income	-	-	-		-	-	-	
Total	<u>5,750,730</u>	<u>5,302,756</u>	<u>11,053,486</u>	<u>51.1%</u>	<u>5,309,722</u>	<u>5,317,035</u>	<u>10,626,757</u>	<u>48.9%</u>
APPROPRIATED SOURCES OUTSIDE THE BILL PATTERN								
State Appropriations (HEGI & State Paid Fringes)	\$ 1,451,686	\$ 1,532,729	\$ 2,984,415		\$ 1,532,729	\$ 1,532,729	\$ 3,065,458	
Higher Education Assistance Funds	727,360	727,360	1,454,720		727,360	727,360	1,454,720	
Available University Fund	-	-	-		-	-	-	
Hazlewood	7,694	-	7,694		-	-	-	
State Grants and Contracts	182,046	202,500	384,546		202,500	202,500	405,000	
Total	<u>2,368,786</u>	<u>2,462,589</u>	<u>4,831,375</u>	<u>22.4%</u>	<u>2,462,589</u>	<u>2,462,589</u>	<u>4,925,178</u>	<u>22.6%</u>
NON-APPROPRIATED SOURCES								
Tuition and Fees (net of Discounts and Allowances)	1,273,949	967,796	2,241,745		1,016,186	1,066,995	2,083,181	
Federal Grants and Contracts	991,878	1,669,038	2,660,916		1,669,038	1,669,038	3,338,076	
State Grants and Contracts	-	-	-		-	-	-	
Local Government Grants and Contracts	14,875	15,000	29,875		15,000	15,000	30,000	
Private Gifts and Grants	96,754	97,000	193,754		97,000	97,000	194,000	
Endowment and Interest Income	3,039	3,000	6,039		3,000	3,000	6,000	
Sales and Services of Educational Activities (net)	20,527	250,000	270,527		250,000	250,000	500,000	
Sales and Services of Hospitals (net)	-	-	-		-	-	-	
Professional Fees (net)	-	-	-		-	-	-	
Auxiliary Enterprises (net)	301,340	22,000	323,340		22,000	22,000	44,000	
Bond Proceeds & Proceeds Interest	104	-	104		-	-	-	
Other Income	-	-	-		-	-	-	
Total	<u>2,702,466</u>	<u>3,023,834</u>	<u>5,726,300</u>	<u>26.5%</u>	<u>3,072,224</u>	<u>3,123,033</u>	<u>6,195,257</u>	<u>28.5%</u>
TOTAL SOURCES	<u>\$ 10,821,982</u>	<u>\$ 10,789,179</u>	<u>\$ 21,611,161</u>	<u>100.0%</u>	<u>\$ 10,844,535</u>	<u>\$ 10,902,657</u>	<u>\$ 21,747,192</u>	<u>100.0%</u>

Page 4 of 64

6.L. Document Production Standards
Summary of Savings Due to Improved Document Production Standards

Agency Code:	Agency Name:	Prepared By:
71E	TSTC Marshall	

Documented Production Standards Strategies	Estimated 2020	Budgeted 2021
1.	\$0	\$0
2.	\$0	\$0
3.	\$0	\$0
4.	\$0	\$0
Total, All Strategies	\$0	\$0
Total Estimated Paper Volume Reduced	-	-

Description:
All savings related to document printing methods have been recognized in prior bienniums.

8. Summary of Requests for Facilities-Related Projects
87th Regular Session, Agency Submission, Version 1

Agency Code: 71E		Agency: TSTC in Marshall		Prepared by:											
Date:				Amount Requested											
				Project Category											
Project ID #	Capital Expenditure Category	Project Description	New Construction	Health and Safety	Deferred Maintenance	Maintenance	2022-23 Total Amount Requested								
1	Construction of Building and Facilities	Industrial Technology and Skilled Trade Performance Learning Center	15,000,000				15,000,000		Tuition Revenue Bond	No	No		1,307,768	0001	General Revenue

87th Regular Session, Agency Submission, Version 1
Automated Budget and Evaluation System of Texas (ABEST)

71E Texas State Technical College - Marshall

	Act 2019	Act 2020	Bud 2021	Est 2022	Est 2023
Gross Tuition					
Gross Resident Tuition	337,186	332,142	371,695	382,845	394,331
Gross Non-Resident Tuition	34,234	43,850	29,428	30,311	31,220
Gross Tuition	371,420	375,992	401,123	413,156	425,551
Less: Resident Waivers and Exemptions (excludes Hazlewood)	(3,826)	(2,472)	(2,742)	(2,824)	(2,909)
Less: Non-Resident Waivers and Exemptions	(43,469)	(29,663)	(38,272)	(39,421)	(40,603)
Less: Hazlewood Exemptions	(17,586)	(16,535)	(20,158)	(20,761)	(21,385)
Less: Board Authorized Tuition Increases (TX. Educ. Code Ann. Sec. 54.008)	0	0	0	0	0
Less: Tuition increases charged to doctoral students with hours in excess of 100 (TX. Educ. Code Ann. Sec. 54.012)	0	0	0	0	0
Less: Tuition increases charged to undergraduate students with excessive hours above degree requirements. (TX. Educ. Code Ann. Sec. 61.0595)	0	0	0	0	0
Less: Tuition rebates for certain undergraduates (TX. Educ. Code Ann. Sec. 54.0065)	0	0	0	0	0
Plus: Tuition waived for Students 55 Years or Older (TX. Educ. Code Ann. Sec. 54.013)	0	0	0	0	0
Less: Tuition for repeated or excessive hours (TX. Educ. Code Ann. Sec. 54.014)	0	0	0	0	0
Plus: Tuition waived for Texas Grant Recipients (TX. Educ. Code Ann. Sec. 56.307)	0	0	0	0	0
Subtotal	306,539	327,322	339,951	350,150	360,654
Less: Transfer of funds for Texas Public Education Grants Program (Tex. Educ. Code Ann. Sec. 56c) and for Emergency Loans (Tex. Educ. Code Ann. Sec. 56d)	(42,434)	(43,799)	(47,461)	(48,885)	(50,352)
Less: Transfer of Funds (2%) for Physician/Dental Loans (Medical Schools)	0	0	0	0	0
Less: Statutory Tuition (Tx. Educ. Code Ann. Sec. 54.051) Set Aside for Doctoral Incentive Loan Repayment Program (Tx. Educ. Code Ann. Sec. 56.095)	0	0	0	0	0
Less: Other Authorized Deduction					
Net Tuition	264,105	283,523	292,490	301,265	310,302
Student Teaching Fees	0	0	0	0	0

87th Regular Session, Agency Submission, Version 1
Automated Budget and Evaluation System of Texas (ABEST)

71E Texas State Technical College - Marshall					
	Act 2019	Act 2020	Bud 2021	Est 2022	Est 2023
Special Course Fees	0	0	0	0	0
Laboratory Fees	0	0	0	0	0
Subtotal, Tuition and Fees (Formula Amounts for Health-Related Institutions)	264,105	283,523	292,490	301,265	310,302
OTHER INCOME					
Interest on General Funds:					
Local Funds in State Treasury	0	0	0	0	0
Funds in Local Depositories, e.g., local amounts	0	0	0	0	0
Other Income (Itemize)					
Subtotal, Other Income	0	0	0	0	0
Subtotal, Other Educational and General Income	264,105	283,523	292,490	301,265	310,302
Less: O.A.S.I. Applicable to Educational and General Local Funds Payrolls	(11,328)	(11,373)	(10,363)	(10,674)	(10,994)
Less: Teachers Retirement System and ORP Proportionality for Educational and General Funds	(9,837)	(10,746)	(10,149)	(10,453)	(10,767)
Less: Staff Group Insurance Premiums	(73,884)	(75,858)	(81,377)	(84,030)	(86,869)
Total, Other Educational and General Income (Formula Amounts for General Academic Institutions)	169,056	185,546	190,601	196,108	201,672
Reconciliation to Summary of Request for FY 2019-2021:					
Plus: Transfer of Funds for Texas Public Education Grants Program and Physician Loans	42,434	43,799	47,461	48,885	50,352
Plus: Transfer of Funds 2% for Physician/Dental Loans (Medical Schools)	0	0	0	0	0
Plus: Transfer of Funds for Cancellation of Student Loans of Physicians	0	0	0	0	0
Plus: Organized Activities	0	0	0	0	0
Plus: Staff Group Insurance Premiums	73,884	75,858	81,377	84,030	86,869
Plus: Board-authorized Tuition Income	0	0	0	0	0
Plus: Tuition Increases Charged to Doctoral Students with Hours in Excess of 100	0	0	0	0	0
Plus: Tuition Increases Charged to Undergraduate Students with Excessive Hours above Degree Requirements (TX. Educ. Code Ann. Sec. 61.0595)	0	0	0	0	0

Schedule 1A: Other Educational and General Income

11/4/2020 11:33:42AM

87th Regular Session, Agency Submission, Version 1
Automated Budget and Evaluation System of Texas (ABEST)

71E Texas State Technical College - Marshall

	Act 2019	Act 2020	Bud 2021	Est 2022	Est 2023
Plus: Tuition rebates for certain undergraduates (TX Educ.Code Ann. Sec. 54.0065)	0	0	0	0	0
Plus: Tuition for repeated or excessive hours (TX. Educ. Code Ann. Sec. 54.014)	0	0	0	0	0
Less: Tuition Waived for Students 55 Years or Older	0	0	0	0	0
Less: Tuition Waived for Texas Grant Recipients	0	0	0	0	0
Total, Other Educational and General Income Reported on Summary of Request	285,374	305,203	319,439	329,023	338,893

Schedule 2: Selected Educational, General and Other Funds

11/4/2020 11:33:43AM

87th Regular Session, Agency Submission, Version 1
Automated Budget and Evaluation System of Texas (ABEST)

71E Texas State Technical College - Marshall

	Act 2019	Act 2020	Bud 2021	Est 2022	Est 2023
General Revenue Transfers					
Transfer from Coordinating Board for Texas College Work Study Program (2019, 2020, 2021)	2,281	4,101	2,500	2,500	2,500
Transfer from Coordinating Board for Professional Nursing Shortage Reduction Program	0	0	0	0	0
Transfer of GR Group Insurance Premium from Comptroller (UT and TAMU Components only)	0	0	0	0	0
Less: Transfer to Other Institutions	(2,230)	(1,000,000)	(1,391,602)	(1,391,602)	(1,391,602)
Less: Transfer to Department of Health, Disproportionate Share - State-Owned Hospitals (2019, 2020, 2021)	0	0	0	0	0
Other (Itemize)					
Other: Fifth Year Accounting Scholarship	0	0	0	0	0
Texas Grants	0	0	0	0	0
B-on-Time Program	0	0	0	0	0
Texas Research Incentive Program	0	0	0	0	0
Less: Transfer to System Administration	(1,127,681)	0	0	0	0
GME Expansion	0	0	0	0	0
Subtotal, General Revenue Transfers	(1,127,630)	(995,899)	(1,389,102)	(1,389,102)	(1,389,102)
General Revenue HEF for Operating Expenses	521,139	650,469	357,565	357,565	357,565
Transfer from Available University Funds (UT, A&M and Prairie View A&M Only)	0	0	0	0	0
Other Additions (Itemize)					
Increase Capital Projects - Educational and General Funds	0	0	0	0	0
Transfer from Department of Health, Disproportionate Share - State-owned Hospitals (2019, 2020, 2021)	0	0	0	0	0
Transfers from Other Funds, e.g., Designated funds transferred for educational and general activities (Itemize)	0	0	0	0	0
Other (Itemize)					
Gross Designated Tuition (Sec. 54.0513)	2,036,330	2,319,776	2,366,172	2,437,157	2,510,271
Indirect Cost Recovery (Sec. 145.001(d))	0	0	0	0	0
Correctional Managed Care Contracts	0	0	0	0	0

71E Texas State Technical College - Marshall

	E&G Enrollment	GR Enrollment	GR-D/OEGI Enrollment	Total E&G (Check)	Local Non-E&G
GR & GR-D Percentages					
GR %	96.37%				
GR-D/Other %	3.63%				
Total Percentage	100.00%				
FULL TIME ACTIVES					
1a Employee Only	41	40	1	41	5
2a Employee and Children	12	12	0	12	0
3a Employee and Spouse	13	13	0	13	0
4a Employee and Family	11	11	0	11	0
5a Eligible, Opt Out	3	3	0	3	0
6a Eligible, Not Enrolled	1	1	0	1	0
Total for This Section	81	80	1	81	5
PART TIME ACTIVES					
1b Employee Only	0	0	0	0	0
2b Employee and Children	0	0	0	0	0
3b Employee and Spouse	0	0	0	0	0
4b Employee and Family	0	0	0	0	0
5b Eligible, Opt Out	0	0	0	0	0
6b Eligible, Not Enrolled	0	0	0	0	0
Total for This Section	0	0	0	0	0
Total Active Enrollment	81	80	1	81	5

Schedule 3A: Staff Group Insurance Data Elements (ERS)
87th Regular Session, Agency Submission, Version 1
Automated Budget and Evaluation System of Texas (ABEST)

11/4/2020 11:33:43AM

71E Texas State Technical College - Marshall

	E&G Enrollment	GR Enrollment	GR-D/OEGI Enrollment	Total E&G (Check)	Local Non-E&G
FULL TIME RETIREES by ERS					
1c Employee Only	0	0	0	0	0
2c Employee and Children	0	0	0	0	0
3c Employee and Spouse	0	0	0	0	0
4c Employee and Family	0	0	0	0	0
5c Eligible, Opt Out	0	0	0	0	0
6c Eligible, Not Enrolled	0	0	0	0	0
Total for This Section	0	0	0	0	0
PART TIME RETIREES by ERS					
1d Employee Only	0	0	0	0	0
2d Employee and Children	0	0	0	0	0
3d Employee and Spouse	0	0	0	0	0
4d Employee and Family	0	0	0	0	0
5d Eligible, Opt Out	0	0	0	0	0
6d Eligible, Not Enrolled	0	0	0	0	0
Total for This Section	0	0	0	0	0
Total Retirees Enrollment	0	0	0	0	0
TOTAL FULL TIME ENROLLMENT					
1e Employee Only	41	40	1	41	5
2e Employee and Children	12	12	0	12	0
3e Employee and Spouse	13	13	0	13	0
4e Employee and Family	11	11	0	11	0
5e Eligible, Opt Out	3	3	0	3	0
6e Eligible, Not Enrolled	1	1	0	1	0
Total for This Section	81	80	1	81	5

Schedule 3A: Staff Group Insurance Data Elements (ERS)
87th Regular Session, Agency Submission, Version 1
Automated Budget and Evaluation System of Texas (ABEST)

11/4/2020 11:33:43AM

71E Texas State Technical College - Marshall

	E&G Enrollment	GR Enrollment	GR-D/OEGI Enrollment	Total E&G (Check)	Local Non-E&G
TOTAL ENROLLMENT					
1f Employee Only	41	40	1	41	5
2f Employee and Children	12	12	0	12	0
3f Employee and Spouse	13	13	0	13	0
4f Employee and Family	11	11	0	11	0
5f Eligible, Opt Out	3	3	0	3	0
6f Eligible, Not Enrolled	1	1	0	1	0
Total for This Section	81	80	1	81	5

Schedule 4: Computation of OASI
87th Regular Session, Agency Submission, Version 1
Automated Budget and Evaluation System of Texas (ABEST)

Agency 71E Texas State Technical College - Marshall

Proportionality Percentage Based on Comptroller Accounting Policy Statement #011, Exhibit 2	2019		2020		2021		2022		2023	
	<u>% to Total</u>	<u>Allocation of OASI</u>	<u>% to Total</u>	<u>Allocation of OASI</u>	<u>% to Total</u>	<u>Allocation of OASI</u>	<u>% to Total</u>	<u>Allocation of OASI</u>	<u>% to Total</u>	<u>Allocation of OASI</u>
General Revenue (% to Total)	96.1481	\$282,754	96.3746	\$302,335	97.1278	\$350,445	97.1278	\$360,958	97.1278	\$371,787
Other Educational and General Funds (% to Total)	3.8519	\$11,328	3.6254	\$11,373	2.8722	\$10,363	2.8722	\$10,674	2.8722	\$10,994
Health-Related Institutions Patient Income (% to Total)	0.0000	\$0	0.0000	\$0	0.0000	\$0	0.0000	\$0	0.0000	\$0
Grand Total, OASI (100%)	100.0000	\$294,082	100.0000	\$313,708	100.0000	\$360,808	100.0000	\$371,632	100.0000	\$382,781

Schedule 5: Calculation of Retirement Proportionality and ORP Differential

11/4/2020 11:33:43AM

87th Regular Session, Agency Submission, Version 1

Automated Budget and Evaluation System of Texas (ABEST)

71E Texas State Technical College - Marshall

Description	Act 2019	Act 2020	Bud 2021	Est 2022	Est 2023
Proportionality Amounts					
Gross Educational and General Payroll - Subject To TRS Retirement	2,939,191	3,196,533	3,929,613	3,916,937	3,908,369
Employer Contribution to TRS Retirement Programs	199,865	239,740	294,721	303,563	312,670
Gross Educational and General Payroll - Subject To ORP Retirement	841,333	858,530	888,197	914,843	942,288
Employer Contribution to ORP Retirement Programs	55,528	56,663	58,621	60,380	62,191
Proportionality Percentage					
General Revenue	96.1481 %	96.3746 %	97.1278 %	97.1278 %	97.1278 %
Other Educational and General Income	3.8519 %	3.6254 %	2.8722 %	2.8722 %	2.8722 %
Health-related Institutions Patient Income	0.0000 %	0.0000 %	0.0000 %	0.0000 %	0.0000 %
Proportional Contribution					
Other Educational and General Proportional Contribution (Other E&G percentage x Total Employer Contribution to Retirement Programs)	9,837	10,746	10,149	10,453	10,767
HRI Patient Income Proportional Contribution (HRI Patient Income percentage x Total Employer Contribution To Retirement Programs)	0	0	0	0	0
Differential					
Differential Percentage	1.9000 %	1.9000 %	1.9000 %	1.9000 %	1.9000 %
Gross Payroll Subject to Differential - Optional Retirement Program	0	0	0	0	0
Total Differential	0	0	0	0	0

Schedule 6: Constitutional Capital Funding
87th Regular Session, Agency Submission, Version 1
Automated Budget and Evaluation System of Texas (ABEST)

11/4/2020 11:33:43AM

71E Texas State Technical College - Marshall					
Activity	Act 2019	Act 2020	Bud 2021	Est 2022	Est 2023
A. PUF Bond Proceeds Allocation	0	0	0	0	0
Project Allocation					
Library Acquisitions	0	0	0	0	0
Construction, Repairs and Renovations	0	0	0	0	0
Furnishings & Equipment	0	0	0	0	0
Computer Equipment & Infrastructure	0	0	0	0	0
Reserve for Future Consideration	0	0	0	0	0
Other (Itemize)					
B. HEF General Revenue Allocation	688,102	848,161	585,211	585,211	634,562
Project Allocation					
Library Acquisitions	0	0	0	0	0
Construction, Repairs and Renovations	127,764	278,238	0	0	0
Furnishings & Equipment	20,286	21,090	50,000	0	0
Computer Equipment & Infrastructure	0	0	0	0	0
Reserve for Future Consideration	120,801	227,648	227,648	276,999	325,820
HEF for Debt Service	419,251	321,185	307,563	308,212	308,742
Other (Itemize)					

Schedule 7: Personnel
87th Regular Session, Agency Submission, Version 1
Automated Budget and Evaluation System of Texas (ABEST)

Date: 11/4/2020

Time: 11:33:44AM

Agency code: **71E** Agency name: **TSTC - Marshall**

	Actual	Actual	Budgeted	Estimated	Estimated
Part A.					
FTE Postions					
Directly Appropriated Funds (Bill Pattern)					
Educational and General Funds Faculty Employees	36.1	36.0	36.0	36.0	36.0
Educational and General Funds Non-Faculty Employees	48.3	46.6	46.6	46.6	46.6
Subtotal, Directly Appropriated Funds	84.4	82.6	82.6	82.6	82.6
Other Appropriated Funds					
AUF	1.0	1.0	1.0	1.0	1.0
Subtotal, Other Appropriated Funds	1.0	1.0	1.0	1.0	1.0
Subtotal, All Appropriated	85.4	83.6	83.6	83.6	83.6
Contract Employees (Correctional Managed Care)	0.0	0.0	0.0	0.0	0.0
Non Appropriated Funds Employees	3.9	4.8	4.8	4.8	4.8
Subtotal, Other Funds & Non-Appropriated	3.9	4.8	4.8	4.8	4.8
GRAND TOTAL	89.3	88.4	88.4	88.4	88.4

Agency 71E Texas State Technical College - Marshall

Project Priority:	Project Code:	Tuition Revenue Bond Request	Total Project Cost	Cost Per Total Gross Square Feet
1	1	\$ 15,000,000	\$ 15,000,000	\$ 228
Name of Proposed Facility:	Project Type:			
Industrial Technology Performance Learning Ce	New Construction			
Location of Facility:	Type of Facility:			
Marshall, Texas	Tech Training Facility			
Project Start Date:	Project Completion Date:			
09/01/2021	08/31/2023			
Gross Square Feet:	Net Assignable Square Feet in Project			
65,750	46,025			

Project Description

As Texas emerges from the recession ushered in by the COVID-19 pandemic and the related shut-down, Texas employers will increasingly generate long-term demand for technicians in skilled and heavy industrial trades. However, over recent decades, the supply of skilled labor has historically been insufficient to meet the needs of Texas employers. New social distancing protocols are now exacerbating this supply issue by significantly constraining the facility capacity for these high demand programs. TSTC in Marshall seeks to add or recapture lost instructional capacity by constructing 65,750 square feet of flexible, industrial technology and skilled trade training facilities. This space will be able to meet immediate demand in the areas of diesel and welding, but will be flexible to accommodate changes in the labor market to meet the needs of employers for decades to come.

Schedule 8C: Tuition Revenue Bonds Request by Project

87th Regular Session, Agency Submission, Version 1

Agency Code: **71E**Agency Name: **Texas State Technical College - Marshall**

Project Name	Authorization Year	Estimated Final Payment Date	2022	2023
Series 2002 - Construct a Library & Administrative Activities Facility	2002	8/1/2022	126,616	-
			126,616	-

71E Texas State Technical College - Marshall

1 - Institutional Enhancement

(1) Year Non-Formula Support Item First Funded: 2000

Year Non-Formula Support Item Established: 2000

Original Appropriation: \$1,003,231

(2) Mission:

Though funded at slightly more than one half its original allocation, this funding is an important source of funding for various core E&G components. For the 2022-2023 biennial budget, these funds will continue to support essential educational support activities, instructional services, and student services.

(3) (a) Major Accomplishments to Date:

Educational support. Increased investment in student outreach services resulting in higher levels of prospect to registered students.

Instructional support. Deployment of faculty development across statewide campuses with emphasis on new faculty bootcamp, multi-level instructor certification courses, department chair training, competency based education training, and online learning courses and assistance.

Institutional Research Tools: Implementation of data research and visualization tools that enabled various levels of college stakeholders to participate in the improvement of instructional programs.

Educational Services: Increased capacity of success coach program to increase persistence/retention of students.

Deaf and disabled services: Continued services for deaf and disabled students.

(3) (b) Major Accomplishments Expected During the Next 2 Years:

Instructional Support: Increased development for faculty, improving and innovating the student learning experience.

Institutional Research: Improved effectiveness and productivity of student learning through available dashboards, insights, and analysis.

Educational Support: Increasing persistence and retention levels facilitated by improved student support services as well as increased capacities.

(4) Funding Source Prior to Receiving Non-Formula Support Funding:

The 76th Legislature created Institutional Enhancement to consolidate Special Items including scholarships, instructional services, plant expansion, new plant startup, and disabilities services.

(5) Formula Funding:

None

(6) Category:

Institutional Enhancement

(7) Transitional Funding:

N

71E Texas State Technical College - Marshall

(8) Non-General Revenue Sources of Funding:

None

(9) Impact of Not Funding:

Reduced capacity for Instructional Support. Due to core nature of services supported by Institutional Enhancement funds, funding reductions or eliminations would be evaluated statewide across funding categories. Most likely consequences of lower funding will be reduced programming, specifically in areas that are considered low-performance, low-potential.

(10) Non-Formula Support Needed on Permanent Basis/Discontinuu

Non-formula support will be needed on a permanent basis.

(11) Non-Formula Support Associated with Time Frame:

This item is not associated with a particular time frame.

(12) Benchmarks:

TSTC is an active participant in the THECB 60x30 strategic plan, which provides an excellent source external benchmarks. Although the strategic plan ends in 2030, TSTC statewide has already surpassed two of the four strategic plan goals. The first achievement is goal number 3, in which 80% of institution graduates will have completed programs with identified marketable skills. The second is goal number 4, in which TSTC students have an average student loan debt of 29% relative to their first year wage, which positively exceeds the plan goal of 60%. TSTC is actively working on improving the number and rate of students with a degree, which comprise the remaining two goals of the THECB 60x30 strategic plan.

(13) Performance Reviews:

Student success is continually reviewed throughout the fiscal year with the use of an increasing number of analytic tools. These reporting tools provide a view of the student life cycle, from application to working in Texas. While different departments are focused on various sections of the student life cycle, the reporting tools enable all areas to be continually refined and improved throughout the year. Each semester program review reports are created for college stakeholders to continually monitor performance and to identify potential areas of improvement.

71E Texas State Technical College - Marshall

2 - Dual Enrollment

(1) Year Non-Formula Support Item First Funded:	2020
Year Non-Formula Support Item Established:	2020
Original Appropriation:	\$100,000

(2) Mission:

Assist approximately 1,247 school districts across Texas with the incorporation of the Career and Technical Education sequenced pathways mandated by the 83rd Legislature's House Bill 5. TSTC is able to meet these needs for many school districts statewide. Today, TSTC has dual credit partnerships with nearly 100 school districts statewide.

(3) (a) Major Accomplishments to Date:

Partnered with 3 school districts in delivery of dual credit.

Creation of compressed sequences, shortening road to TSTC graduation and entry to Texas workforce in a shorter time frame, ensuring qualification to meet the workforce demands.

Expanded reach of service through direct, smooth and transitionless online dual credit offerings addressing CTE/Career Cluster occupations and needs in high demand TWC identified occupations. This provides access to these pathways electronically, regardless of available faculty or staff on the ISD campus.

For technical pathways requiring face-to-face format for hands-on training (e.g., Welding and Automotive) delivery is made by credentialed and qualified ISD faculty.

Created crosswalk for technical pathways between the The Public Education Information Management System standards (PEIMS), allowing the districts to meet standards regardless of available, qualified faculty or staff.

Where feasible, facilitate student travel to local TSTC campus to access technically qualified staff.

Participated with the Advanced Technical Credit (ATC) Leadership Committee, a committee of high school community/technical college representatives, in setting the criteria for ATC dual credit across the state, with input from TEA and THECB.

(3) (b) Major Accomplishments Expected During the Next 2 Years:

Increase school district partnerships statewide (depending on funding).

Create statewide centers of excellence, providing scaling capability to meet statewide needs.

Expand number of HB 5 mandated CTE pathways offered.

Expand number of students graduating on a distinguished level (through completed foundation plan endorsements).

71E Texas State Technical College - Marshall

(4) Funding Source Prior to Receiving Non-Formula Support Funding:

None

(5) Formula Funding:

General Revenue Dedicated - Statutory Tuition at a Discounted Rate

(6) Category:

Instructional Support

(7) Transitional Funding:

N

(8) Non-General Revenue Sources of Funding:

General Revenue Dedicated - Statutory Tuition at a Discounted Rate

(9) Impact of Not Funding:

Significant reduction to dual credit offerings and increased costs to high school students for tuition revenue to be charged.

(10) Non-Formula Support Needed on Permanent Basis/Discontinuation:

Non-formula support will be needed on a permanent basis if the THECB formula funding recommendation for dual credit at TSTC is not approved.

(11) Non-Formula Support Associated with Time Frame:

This item is not associated with a particular time frame.

(12) Benchmarks:

TSTC is an active participant in the THECB 60x30 strategic plan, which provides an excellent external benchmark of high school students enrolling in college and, subsequently, obtaining a degree.

(13) Performance Reviews:

N/A

71E Texas State Technical College - Marshall

3 - Industrial Technologies Performance Learning Center

(1) Year Non-Formula Support Item First Funded: 2022

Year Non-Formula Support Item Established: 2022

Original Appropriation: \$1,307,768

(2) Mission:

As Texas emerges from the recession ushered in by the COVID-19 pandemic and the related shut-down, Texas employers will increasingly generate long-term demand for technicians in skilled and heavy industrial trades. However, over recent decades, the supply of skilled labor has historically been insufficient to meet the needs of Texas employers. New social distancing protocols are now exacerbating this supply issue by significantly constraining the facility capacity for these high demand programs. TSTC in Marshall seeks to add or recapture lost instructional capacity by constructing 65,750 square feet of flexible, industrial technology and skilled trade training facilities. This space will be able to meet immediate demand in the areas of diesel and welding, but will be flexible to accommodate changes in the labor market to meet the needs of employers for decades to come.

(3) (a) Major Accomplishments to Date:

TSTC is the State of Texas' leading provider of two-year technical education in industries critical to the State's long-term sustainable growth, and TSTC is an essential partner to industry as Texas faces the threat of a long-emerging trade and industrial skills gap. As the State rebounds from the COVID-19 induced recession, the College will serve at the front lines of the economic recovery. With this in mind, the College is steering all resources of the 10-campus, statewide institution towards building and maintaining a globally competitive workforce for Texas business and industry.

(3) (b) Major Accomplishments Expected During the Next 2 Years:

The addition of multidisciplinary teaching space will accommodate a versatile training modality suitable for traditional and performance-based education. This space will increase capacity to meet immediate workforce needs in high-demand technical industries, but will be flexible to accommodate changes in the labor market to meet the needs of employers for decades to come.

(4) Funding Source Prior to Receiving Non-Formula Support Funding:

None

(5) Formula Funding:

None

(6) Category:

Instructional Support

(7) Transitional Funding:

N

71E Texas State Technical College - Marshall

(8) Non-General Revenue Sources of Funding:

Funding from local community and industry to be sought to assist with start up operational cost and instructional equipment.

(9) Impact of Not Funding:

Reduced capacity for reducing Texas' technical skills shortage.

(10) Non-Formula Support Needed on Permanent Basis/Discontinuation:

TRB Debt Service

(11) Non-Formula Support Associated with Time Frame:

20 year TRB Debt Service

(12) Benchmarks:

N/A

(13) Performance Reviews:

N/A



© TSTC. October 2020. All rights reserved.

Texas State Technical College (TSTC) is accredited by the Southern Association of Colleges and Schools Commission on Colleges (SACSCOC) to award Associate Degrees and Certificates of Completion. Contact the Southern Association of Colleges and Schools Commission on Colleges at 1866 Southern Lane, Decatur, Georgia 30033-4097 or call 404-679-4500 for questions about the accreditation of Texas State Technical College.

Equal opportunity shall be afforded within TSTC to all employees and applicants for admission or employment regardless of race, color, gender, religion, national origin, age, genetic information, disability or veteran status. TSTC will make reasonable accommodations for persons with disabilities. TSTC's policy is that, in all aspects of its operations, each person with a disability shall be considered for admission or access to, or treatment or employment in, its programs and activities in accordance with Part 84 of Title 45, the regulation implementing Section 504 of the Rehabilitation Act of 1973.