

# LEGISLATIVE APPROPRIATIONS REQUEST

FISCAL YEARS 2024 AND 2025  
TSTC IN FORT BEND COUNTY





# **LEGISLATIVE APPROPRIATIONS REQUEST FOR FISCAL YEARS 2024 & 2025**

Submitted to the Governor's Office of Budget, Planning  
and Policy and the Legislative Budget Board  
by Texas State Technical College in Fort Bend County.

Original submission as of August 5, 2022.

Amended submission as of October 19, 2022

# CONTENTS

Administrator's Statement	2	Exceptional Items	
Organization Chart	7	4.A. Exceptional Item Request Schedule	46
Certificate of Dual Submissions	8	4.B. Exceptional Items Strategy Allocation Schedule	48
Summaries of Request		4.C. Exceptional Items Strategy Request	49
Budget Overview of Biennial Amounts	9	General Revenue (GR) and	50
2.A. Summary of Base Request by Strategy	10	General Revenue-Dedicated (GR-D) Baseline	
2.B. Summary of Base Request by Method of Finance	13	Supporting Schedules	
2.C. Summary of Base Request by Object of Expense	18	6.A. Historically Underutilized	51
2.D. Summary of Base Request Objective Outcomes	19	Business Supporting Schedule	
2.E. Summary of Exceptional Items Request	20	6.H. Estimated Funds Outside the Institution's	53
2.F. Summary of Total Request by Strategy	21	Bill Pattern	
2.G. Summary of Total Request Objective Outcomes	24	Higher Education Supporting Schedules	
Strategy Request		Schedule 1A: Other Educational and General Income	54
3.A. Instruction and Administration	25	Schedule 2: Selected Educational, General and Other Funds	57
Staff Group Insurance Premiums	27	Schedule 3A: Staff Group Insurance Data Elements (ERS)	58
Texas Public Education Grants	29	Schedule 4: Computation of OASI	61
Educational and General Space Support	31	Schedule 5: Calculation of Retirement Proportionality	62
Capital Construction Assistance Projects Revenue Bonds	33	and ORP Differential	
Small Institution Supplement	35	Schedule 6: Constitutional Capital Funding	63
Startup Funding	38	Schedule 7: Personnel	64
Institutional Enhancement	41	Schedule 8C: Capital Construction Assistance Projects	65
Exceptional Item Request	43	Revenue Bonds Request by Project	
		Schedule 9: Non-formula Support	66

**71F Texas State Technical College - Ft. Bend**

---

In accordance with the instructions, Texas State Technical College (TSTC) submits the following Legislative Appropriations Request (LAR) for fiscal years 2024 and 2025 to the Governor's Office of Budget, Policy, and Planning and the Legislative Budget Board. TSTC's LAR is submitted in a manner consistent with the description of TSTC in Section 135.02 of the Texas Education Code, including a LAR for the System Administration unit and the College's six campus bill patterns.

**OVERVIEW**

The drivers of Texas' strong economy--strong business climate and competitive workforce--are threatened by both general labor and specific skill shortages. These skills are needed to continue robust recovery of the Texas economy following the pandemic. At the height of the pandemic, there were more than 2.5 unemployed persons for each available job. As illustrated in Figure 1, this ratio flipped to 2.2 jobs for every unemployed person in the summer of 2022. Despite Texas adding more population than any other state during the past decade, the growth in labor force has not kept pace with job growth. Texas State Technical College (TSTC) exists to respond directly to many of the specific skill shortages that compromise Texas' growth potential.

TSTC is Texas' workforce engine whose value and funding is determined based on employment, income growth, and the economic return to the state. With 10 campuses across the Texas landscape, TSTC exists to meet the high-tech challenges of Texas business and industry. In 2013, TSTC transitioned to become the state's leading institution in pay-for-performance funding. During that session, the legislature overhauled TSTC's funding formula so that the state only funds TSTC's operations when it delivers high quality workforce to Texas industry. Restructuring this funding mechanism aligned the interests of taxpayers (both individuals and employers seeking prosperity) and the institution funded with their taxes. As a result, students are attaining higher employability after their time at TSTC and industry's need is being met at higher rates than ever before.

In the decade under pay-for-performance funding, the state's general revenue derived from TSTC's former students grew 41% (Figure 2) when comparing the cohort revenue production between the 87th and 83rd sessions. Based on the continued production of talent in high demand fields, TSTC expects student prosperity (and the growth in returned value to Texas) to continue. Meaningful expansion of this growth capacity is constrained by capital limitations required to construct and maintain technical training facilities. Fortunately, the 87th Legislature began to address this. Unfortunately, industry's need is much greater than this expanded capacity can meaningfully address.

During the third special session of the 87th legislative session, the Texas Legislature increased its commitment to workforce training capacity when it authorized \$208 million in bond authority (capital construction assistance projects or CCAP) for construction for technical education facilities. In the two years that followed that capital request, construction prices increased at unprecedented rates. The institution faced two options: (1) be safe and under-deliver on its commitment or (2) be bold and press ahead to meet the commitments made when the legislature authorized the capital assistance. TSTC chose to be bold and deliver on its promise. Specifically, TSTC will nearly match the CCAP authorization by injecting up to \$187 million of institutional (non-CCAP) proceeds to deliver on its promise to increase training capacity.

TSTC's bold plans are based on the following conditions: (1) focused investment into dense and growing markets (specifically responding to industrial workforce needs and demand), (2) sales growth (increased enrollments) in the new and expanded industrial training capacities, and (3) reliance on a consistent "commission rate" contained in the returned value funding formula. This combination of conditions will fuel growth in the production of workforce necessary to maintain Texas' economic strength.

Despite TSTC's bold commitment to ensure the increased levels of industrial training capacity, the state's workforce needs are substantial. More investment is required to meaningfully supply the workforce demands of Texas industry. Consequently, TSTC's appropriation requests focus on capital construction and facilities infrastructure needs.

**71F Texas State Technical College - Ft. Bend**

---

**PURPOSE OF FUNDING REQUESTS and EXCEPTIONAL ITEMS**

**Exceptional Item No 1: Technical Institution Equipment and Facilities Supplement (TIEFS)**

Rockets, aircraft, heavy machinery, manufacturing facilities, robotics, pipelines, refineries, and roadways are resources critical to the economic production of the state. Preparing a workforce to build and maintain these resources requires an environment where students and instructors assemble around, and work on, large industrial objects. In recent years, TSTC has embraced emerging technologies to simulate this expensive equipment and enhance the learning environment by creating in-field scenarios to prepare students for the work environment. Similar to large industrial teaching facilities and equipment, augmented reality technologies require substantial investment and ongoing refresh commitments. The level of investment required to train these workers is not sufficiently supported under existing funding mechanisms. Therefore, the result is a physical environment that betrays the real value of technical training for Texas.

TSTC's legislative appropriation request includes a \$15.5 million Exceptional Item to correct TSTC's severe funding shortfall in the education and general space support (E&G Space Support) infrastructure funding formula and to create a dedicated funding source for specialized instructional equipment that is unique to technical institutions. TSTC receives infrastructure funding for E&G Space Support through a formula based on an assessment of space needs and a funding allocation applied across Texas' public universities, technical colleges, the Lamar State Colleges, and public health-related institutions.

Rider 55 of the General Appropriations Act, under the 84th Legislature, commissioned a study of the space projection models contained in the E&G Space Support funding allocation. One recommendation from the independent consultant was to correct a significant underestimate of teaching space for TSTC to accommodate the unique vocational programs at these colleges. During the Texas Higher Education Coordinating Board (THECB) Formula Advisory Committee process, THECB staff indicated the disparity for TSTC was over 50% of its allocation (approximately \$3.7 million annually). During the Rider 55 study process, in response to the funding disparity, the rulemaking committee noted that changes to the predicted square feet for certain institutions within the space model impact the distribution of funds amongst all institutions in the infrastructure formula. Since the E&G Space Support allocation is a zero-sum process, if a minority member of the allocation group requires additional funding to correct a disparity, others lose funding. The recommendation was therefore rejected by the majority. The correction calls for additional funding for all members or unique funding for the minority members to resolve the disparity.

On an annual basis TSTC typically spends around \$1.8 million to refresh instructional equipment to maintain lab environments that resemble the workplace. These expenditures are often characterized by heavy equipment purchases (e.g., aircraft, diesel truck and tractors, CNC machines, mechatronics, robotics, centrifugal pumps, mechanical drives, conveyor belts, generators, etc) not common across higher education sectors. Capital constraints and competing priorities (education affordability and other operational expenses) have caused many labs to fall short of a cutting edge, even relevant, workplace environment. Approximately \$6.7 million in CARES grant proceeds created opportunities to address this issue while removing pandemic-related lab constraints with new augmented/virtual reality technologies. Further deployment and maintenance of this equipment will require over \$2.2 million annually for the foreseeable future.

**Exceptional Item No 2: Commercial Driver's License Training Capacity**

Texas industry and supply chain are constrained by the shortage in commercial driver's license (CDL) holders. This shortage spans across a broad range of industries in Texas. The American Trucking Association (ATA) reports that nearly 72% of all freight tonnage moved in the U.S. travels by commercial truck. In order to meet America's freight needs, the industry requires nearly three million heavy-duty Class 8 trucks and over three million truck drivers. ATA reports the current shortage of truck drivers nationwide is around 80,000 and will reach 160,000 by 2030 if current trends continue. According to the Texas Trucking Association (TXTA), the shortage of CDL drivers continues to negatively impact the supply chain, as 82% of Texas communities depend exclusively on trucks for needed products. TXTA also advises that 15 of every

**71F Texas State Technical College - Ft. Bend**

---

1,000 jobs in Texas belong to truckers, and projects approximately 62,000 new job openings due to growth over the next 10 years.

With its statewide scope and strategic placement across the Texas landscape, TSTC is uniquely positioned to address the CDL shortage in a meaningful way. To execute rapidly, TSTC requests an Exceptional Item of \$103 million to (1) establish or expand six CDL training and testing sites, (2) create licensing capacity to license approximately 2,400 drivers per year, and (3) establish a platform for an advanced transportation ecosystem around the state meeting both the immediate and future training needs of Texas.

Funding Request: Maintain Consistency in Performance Funding:

TSTC's primary source of funding its operations is the returned value funding appropriation, which returns a "commission" to TSTC based on the economic value generated by the placement and wages of former students. In most sessions, the legislature maintained the link between performance and funding by maintaining a consistent commission rate (36%) each session. TSTC's narrow mission and reliable economic model has contributed to a sustainable transformation of TSTC from a struggling education agency to a market-based workforce pipeline capable of returning tangible economic value to taxpayers as well as upward mobility for Texans often overlooked by traditional educational sectors.

Funding Update: Dual Credit

Since the last legislative session, TSTC has worked closely with the Legislative Budget Board and the Texas Higher Education Coordinating Board to update bill patterns for dual credit funding at TSTC from non-formula support to formula funding based on contact hours. Dual credit funding in this request tentatively remains a non-formula support item, with the expectation that as a part of the LAR process, the bill pattern will be converted to contact hour formula funding.

#### **SIGNIFICANT CHANGES IN POLICY**

##### **Performance-Based Impact on Enrollment Policy**

Unlike traditional educational policy, TSTC prioritizes placement over total enrollment and contact hours. For TSTC, the measures of enrollment and contact hours are incomplete measures for assessing TSTC's performance. Performance evaluation of TSTC requires assessment of what is defined in its mission: placement of workforce in high paying jobs. Accordingly, TSTC measures outputs such as placements, earnings, and attainment for every workforce program. A natural consequence of focus on production quantities and qualities is a focus on high quality production lines and elimination of low production lines. Since adopting the returned value funding formula, capital prioritization towards highest yielding programs (those with the best outcomes for students and employers) is central to the institutional effectiveness process. Making the tough but necessary decisions, TSTC closed 20 underperforming programs during this time, shifting the resources to programs that produce better results for Texas. Overall enrollment trends mask this shrewd shift of resources as well as the significant growth in the highest value markets. Figure 3 illustrates how TSTC is growing its production lines, and impact, to create workforce supply where it is needed most and where students will realize the highest employment potential.

In a production environment, measures such as enrollment and contact hours are input and efficiency measures, similar to raw materials and work-in-progress in a manufacturing setting. For TSTC, enrollment is a static measure of work-in-progress at a point in time. The College is incentivized to keep its inventory on hand (enrollment) at optimal levels to achieve the highest level of production (qualified workforce), while traditional schools are incentivized to maximize enrollment.

**71F Texas State Technical College - Ft. Bend**

---

**SIGNIFICANT CHANGES IN PROVISION OF SERVICE AND SIGNIFICANT EXTERNALITIES**

**Performance-based Education**

TSTC's culture of performance is permeating the student experience. The College is in the midst of retooling the learning process across its program areas with a shift to performance-based education. Performance-based education replaces an emphasis on credit hours and grades with demonstrated mastery of essential knowledge and skills. The new modality emphasizes value, flexibility, convenience and applied learning that involves frequent, substantive interaction between an apprentice and an expert. TSTC's performance-based education is designed to serve untapped markets that traditional education struggles to reach and serve. This format is relevant to nontraditional student markets such as working adults, family caregivers, military veterans, and college dropouts who seek relevance in their time-on-task and value the shift from transactional education to performance-based education.

As TSTC transitions learning to a performance-based approach, it manages challenges of accreditation, legal, and policy obstacles. Oversight of educational institutions focus on traditional/transactional education inputs rather than more relevant student outcomes, such as employability of former students. Performance-based learning environments work within policy challenges of federal financial aid policies focused on controlling risk by regulating inputs.

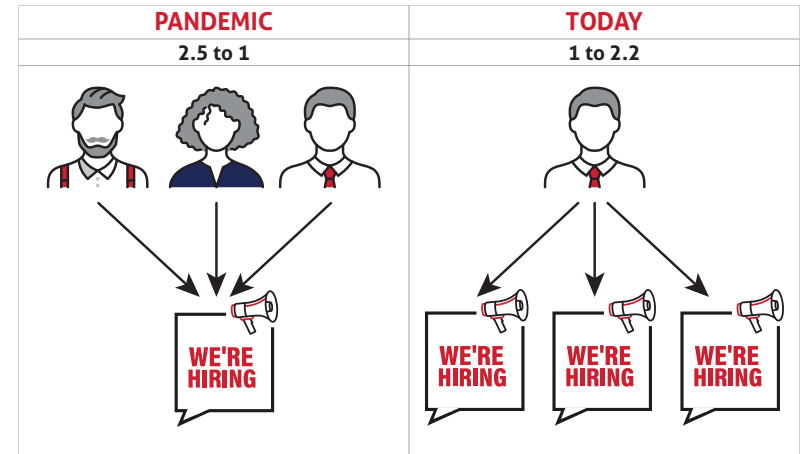
**Post-Pandemic Educational Relevance**

TSTC's COVID-19 response and acceleration into the future of higher education.

TSTC's transition to a performance-based institution was met with an intensified set of challenges as COVID-19 arrived in 2020. The pandemic rattled the world, including higher education. With the rapid onset of pandemic-induced unemployment in Texas, TSTC teams accelerated their new teaching modalities and modified facilities to deliver hands-on instruction in a new and socially-distant format ensuring teammates and students were safe and productive. TSTC made this transition in weeks, resuming instruction of essential workforce programs to mitigate pandemic disruptions. After the initial adaptations and return to campus, TSTC built on the lessons learned from its pandemic response, recognizing features of pandemic operations that shaped a new normal for higher education, creating new capabilities and adopting new technologies into its operation.

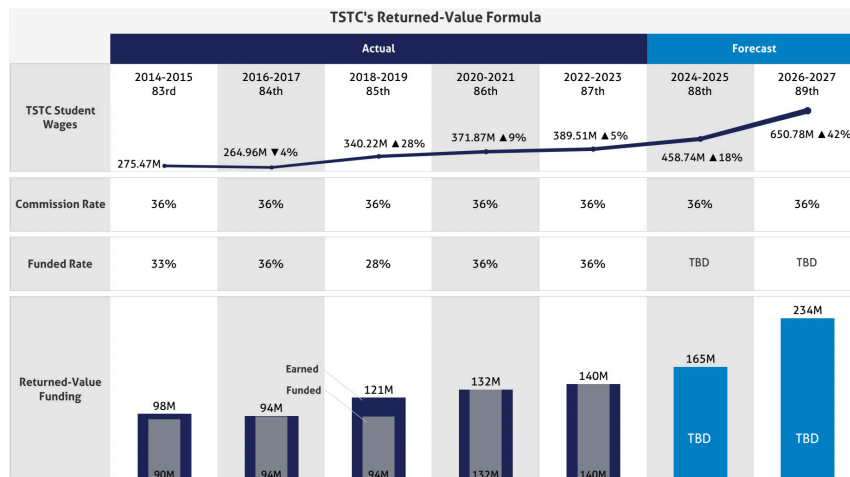
# Placing More Texans in Great-Paying Jobs

1.



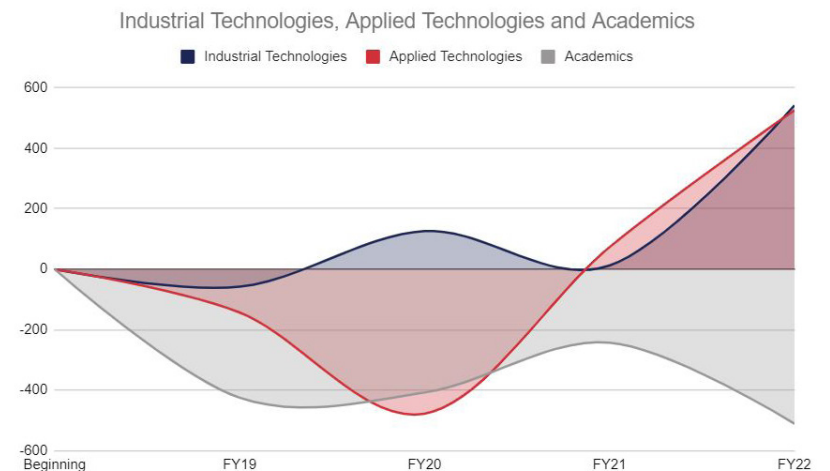
At the height of the pandemic, there were more than 2.5 unemployed individuals for each available job. In the summer of 2022, this ratio flipped to 2.2 jobs for each unemployed individual.

2.



In the decade under pay-for-performance funding, the state's general revenue derived from TSTC's former students grew 41% when comparing the cohort revenue production between the 83rd and 87th sessions.

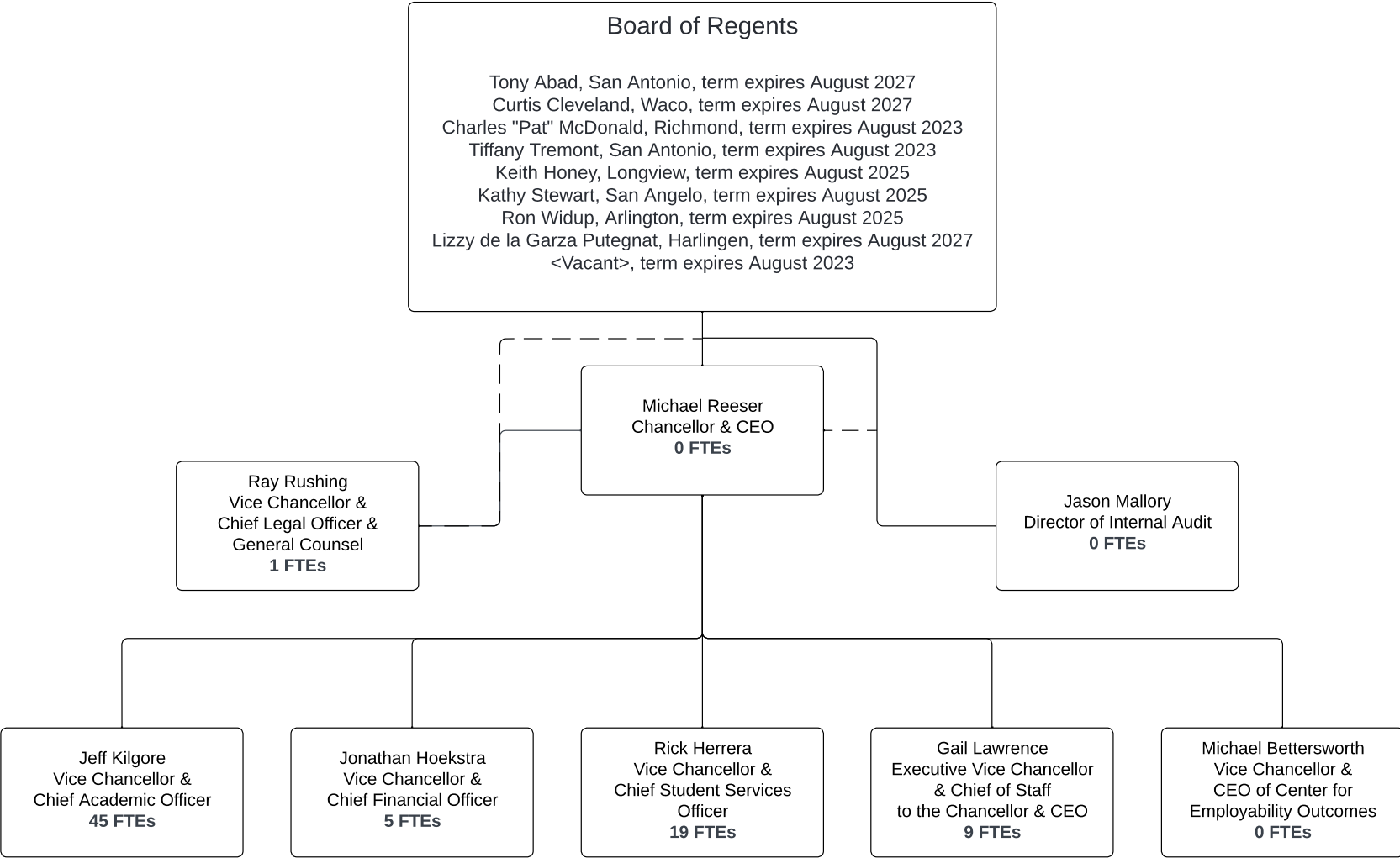
3.



TSTC is growing its production lines to create workforce supply where it is needed most (Industrial & Applied Technologies) and where students will realize the highest employment potential.



LAR - ORGANIZATION CHART - TSTC IN FORT BEND COUNTY





## CERTIFICATE

**Agency Name** Texas State Technical College

This is to certify that the information contained in the agency Legislative Appropriations Request filed with the Legislative Budget Board (LBB) and the Governor's Office Budget Division (Governor's Office) is accurate to the best of my knowledge and that the electronic submission to the LBB via the Automated Budget and Evaluation System of Texas (ABEST) and the PDF file submitted via the LBB Document Submission application are identical.

Additionally, should it become likely at any time that unexpended balances will accrue for any account, the LBB and the Governor's Office will be notified in writing in accordance with Article IX, Section 7.01 (2022–23 GAA).

**Chief Executive Officer or Presiding Judge**

**Board or Commission Chair**

\_\_\_\_\_  
Signature

\_\_\_\_\_  
Signature

\_\_\_\_\_  
Printed Name

\_\_\_\_\_  
Printed Name


\_\_\_\_\_  
Title

\_\_\_\_\_  
Title

\_\_\_\_\_  
Date

\_\_\_\_\_  
Date

**Chief Financial Officer**

  
Jonathan Hoekstra (Aug 4, 2022 10:04 CDT)

\_\_\_\_\_  
Signature

\_\_\_\_\_  
Jonathan Hoekstra

\_\_\_\_\_  
Printed Name

\_\_\_\_\_  
Chief Financial Officer

\_\_\_\_\_  
Title

\_\_\_\_\_  
Aug 4, 2022

\_\_\_\_\_  
Date

**Budget Overview - Biennial Amounts**  
**88th Regular Session, Agency Submission, Version 1**  
Automated Budget and Evaluation System of Texas (ABEST)

71F Texas State Technical College - Ft. Bend  
Appropriation Years: 2024-25

	GENERAL REVENUE FUNDS		GR DEDICATED		FEDERAL FUNDS		OTHER FUNDS		ALL FUNDS		EXCEPTIONAL ITEM FUNDS
	2022-23	2024-25	2022-23	2024-25	2022-23	2024-25	2022-23	2024-25	2022-23	2024-25	2024-25
<b>Goal: 1. Provide Instructional and Operations Support</b>											
1.1.3. Staff Group Insurance Premiums	85,458		70,028	165,634					155,486	165,634	
1.1.6. Texas Public Education Grants			108,914	110,322					108,914	110,322	
<b>Total, Goal</b>	<b>85,458</b>		<b>178,942</b>	<b>275,956</b>					<b>264,400</b>	<b>275,956</b>	
<b>Goal: 2. Provide Infrastructure Support</b>											
2.1.1. E&G Space Support	1,044,370		(581,332)						463,038		
2.1.2. Ccap Revenue Bonds	6,004,725	9,051,874							6,004,725	9,051,874	
2.1.5. Small Institution Supplement	1,316,566		866,900						2,183,466		
<b>Total, Goal</b>	<b>8,365,661</b>	<b>9,051,874</b>	<b>285,568</b>						<b>8,651,229</b>	<b>9,051,874</b>	
<b>Goal: 3. Provide Non-formula Support</b>											
3.1.1. Startup Funding	9,857,758	6,561,416	(342,834)						9,514,924	6,561,416	
3.4.1. Institutional Enhancement	1,495,582	1,495,582	(20,526)						1,475,056	1,495,582	
3.5.1. Exceptional Item Request											13,649,978
<b>Total, Goal</b>	<b>11,353,340</b>	<b>8,056,998</b>	<b>(363,360)</b>						<b>10,989,980</b>	<b>8,056,998</b>	<b>13,649,978</b>
<b>Total, Agency</b>	<b>19,804,459</b>	<b>17,108,872</b>	<b>101,150</b>	<b>275,956</b>					<b>19,905,609</b>	<b>17,384,828</b>	<b>13,649,978</b>
<b>Total FTEs</b>									<b>78.2</b>	<b>78.2</b>	<b>7.0</b>

## 2.A. Summary of Base Request by Strategy

88th Regular Session, Agency Submission, Version 1

Automated Budget and Evaluation System of Texas (ABEST)

### 71F Texas State Technical College - Ft. Bend

Goal / Objective / STRATEGY	Exp 2021	Est 2022	Bud 2023	Req 2024	Req 2025
<b>1</b> Provide Instructional and Operations Support					
<b>1</b> <i>Provide Instructional and Operations Support</i>					
<b>3 STAFF GROUP INSURANCE PREMIUMS</b>	67,321	76,559	78,927	81,461	84,173
<b>6 TEXAS PUBLIC EDUCATION GRANTS</b>	50,303	56,146	52,768	54,341	55,981
<b>TOTAL, GOAL 1</b>	<b>\$117,624</b>	<b>\$132,705</b>	<b>\$131,695</b>	<b>\$135,802</b>	<b>\$140,154</b>

<b>2</b> Provide Infrastructure Support					
<b>1</b> <i>Provide Operation and Maintenance of E&amp;G Space</i>					
<b>1 E&amp;G SPACE SUPPORT (1)</b>	134,419	231,519	231,519	0	0
<b>2 CCAP REVENUE BONDS</b>	970,144	972,469	5,032,256	4,526,680	4,525,194
<b>5 SMALL INSTITUTION SUPPLEMENT (1)</b>	791,475	1,091,733	1,091,733	0	0
<b>TOTAL, GOAL 2</b>	<b>\$1,896,038</b>	<b>\$2,295,721</b>	<b>\$6,355,508</b>	<b>\$4,526,680</b>	<b>\$4,525,194</b>

### **3** Provide Non-formula Support

#### **1** *Instructional*

(1) - Formula funded strategies are not requested in 2024-25 because amounts are not determined by institutions.



## 2.A. Summary of Base Request by Strategy

88th Regular Session, Agency Submission, Version 1

Automated Budget and Evaluation System of Texas (ABEST)

### 71F Texas State Technical College - Ft. Bend

Goal / Objective / STRATEGY	Exp 2021	Est 2022	Bud 2023	Req 2024	Req 2025
<b>1 STARTUP FUNDING</b>	4,597,025	4,854,465	4,660,459	3,280,708	3,280,708
<b>4 Institutional</b>					
<b>1 INSTITUTIONAL ENHANCEMENT</b>	676,406	737,528	737,528	747,791	747,791
<b>5 Exceptional Item Request</b>					
<b>1 EXCEPTIONAL ITEM REQUEST</b>	0	0	0	0	0
<b>TOTAL, GOAL 3</b>	<b>\$5,273,431</b>	<b>\$5,591,993</b>	<b>\$5,397,987</b>	<b>\$4,028,499</b>	<b>\$4,028,499</b>
<b>TOTAL, AGENCY STRATEGY REQUEST</b>	<b>\$7,287,093</b>	<b>\$8,020,419</b>	<b>\$11,885,190</b>	<b>\$8,690,981</b>	<b>\$8,693,847</b>
<b>TOTAL, AGENCY RIDER APPROPRIATIONS REQUEST*</b>				<b>\$0</b>	<b>\$0</b>
<b>GRAND TOTAL, AGENCY REQUEST</b>	<b>\$7,287,093</b>	<b>\$8,020,419</b>	<b>\$11,885,190</b>	<b>\$8,690,981</b>	<b>\$8,693,847</b>

## 2.A. Summary of Base Request by Strategy

88th Regular Session, Agency Submission, Version 1

Automated Budget and Evaluation System of Texas (ABEST)

### 71F Texas State Technical College - Ft. Bend

Goal / Objective / STRATEGY	Exp 2021	Est 2022	Bud 2023	Req 2024	Req 2025
<u>METHOD OF FINANCING:</u>					
<b>General Revenue Funds:</b>					
1 General Revenue Fund	7,225,468	8,263,566	11,540,893	8,555,179	8,553,693
<b>SUBTOTAL</b>	<b>\$7,225,468</b>	<b>\$8,263,566</b>	<b>\$11,540,893</b>	<b>\$8,555,179</b>	<b>\$8,553,693</b>
<b>General Revenue Dedicated Funds:</b>					
770 Est. Other Educational & General	61,625	(243,147)	344,297	135,802	140,154
<b>SUBTOTAL</b>	<b>\$61,625</b>	<b>\$(243,147)</b>	<b>\$344,297</b>	<b>\$135,802</b>	<b>\$140,154</b>
<b>TOTAL, METHOD OF FINANCING</b>	<b>\$7,287,093</b>	<b>\$8,020,419</b>	<b>\$11,885,190</b>	<b>\$8,690,981</b>	<b>\$8,693,847</b>

\*Rider appropriations for the historical years are included in the strategy amounts.

**2.B. Summary of Base Request by Method of Finance**

88th Regular Session, Agency Submission, Version 1

Automated Budget and Evaluation System of Texas (ABEST)

Agency code: **71F**Agency name: **Texas State Technical College - Ft. Bend**

METHOD OF FINANCING	Exp 2021	Est 2022	Bud 2023	Req 2024	Req 2025
---------------------	----------	----------	----------	----------	----------

**GENERAL REVENUE****1** General Revenue Fund*REGULAR APPROPRIATIONS*

Regular Appropriations from MOF Table (2020-21 GAA)

\$5,956,640	\$0	\$0	\$0	\$0
-------------	-----	-----	-----	-----

Regular Appropriations from MOF Table (2022-23 GAA)

\$0	\$6,158,533	\$6,156,498	\$0	\$0
-----	-------------	-------------	-----	-----

Regular Appropriations from MOF Table (2024-25 GAA)

\$0	\$0	\$0	\$8,555,179	\$8,553,693
-----	-----	-----	-------------	-------------

*RIDER APPROPRIATION*

Art IX, Sec 17.47 Additional Funding for Formula Funding (2022-23 GAA)

\$0	\$23,233	\$23,233	\$0	\$0
-----	----------	----------	-----	-----

**Comments:** Incorporates Article IX, §17.47, 87th Legislature, Regular Session, relating to additional funding for formula funding for Texas State Technical College - Fort Bend, resulting in increases of \$23,233 out of General Revenue Funds and .5 FTEs each fiscal year of the biennium.

*TRANSFERS*

Administrative - From Harlingen to Ft. Bend County

**2.B. Summary of Base Request by Method of Finance**

88th Regular Session, Agency Submission, Version 1

Automated Budget and Evaluation System of Texas (ABEST)

Agency code: 71F		Agency name: Texas State Technical College - Ft. Bend				
METHOD OF FINANCING		Exp 2021	Est 2022	Bud 2023	Req 2024	Req 2025
<u>GENERAL REVENUE</u>		\$768,828	\$2,081,800	\$1,300,000	\$0	\$0
Administrative - From Waco to Ft. Bend County		\$500,000	\$0	\$0	\$0	\$0
CCAP Advance - From System Administration to Ft. Bend County		\$0	\$0	\$4,061,162	\$0	\$0
TOTAL,	General Revenue Fund	\$7,225,468	\$8,263,566	\$11,540,893	\$8,555,179	\$8,553,693
TOTAL, ALL	GENERAL REVENUE	\$7,225,468	\$8,263,566	\$11,540,893	\$8,555,179	\$8,553,693
<u>GENERAL REVENUE FUND - DEDICATED</u>						
<u>770</u> GR Dedicated - Estimated Other Educational and General Income Account No. 770						
REGULAR APPROPRIATIONS						
Regular Appropriations from MOF Table (2020-21 GAA)		\$314,831	\$0	\$0	\$0	\$0
Regular Appropriations from MOF Table (2022-23 GAA)		\$0	\$260,633	\$268,453	\$0	\$0



**2.B. Summary of Base Request by Method of Finance**

88th Regular Session, Agency Submission, Version 1

Automated Budget and Evaluation System of Texas (ABEST)

Agency code:	<b>71F</b>	Agency name:	<b>Texas State Technical College - Ft. Bend</b>			
METHOD OF FINANCING		Exp 2021	Est 2022	Bud 2023	Req 2024	Req 2025
<b><u>GENERAL REVENUE FUND - DEDICATED</u></b>						
Regular Appropriations from MOF Table (2024-25 GAA)						
		\$0	\$0	\$0	\$135,802	\$140,154
<i>BASE ADJUSTMENT</i>						
Revised Receipts						
		\$20,179	\$128,179	\$75,844	\$0	\$0
Adjustments to Expended						
		\$(273,385)	\$(631,959)	\$0	\$0	\$0
TOTAL,	GR Dedicated - Estimated Other Educational and General Income Account No. 770	\$61,625	\$(243,147)	\$344,297	\$135,802	\$140,154
TOTAL GENERAL REVENUE FUND - DEDICATED - 704, 708 & 770						
		\$61,625	\$(243,147)	\$344,297	\$135,802	\$140,154
TOTAL, ALL	GENERAL REVENUE FUND - DEDICATED	\$61,625	\$(243,147)	\$344,297	\$135,802	\$140,154
TOTAL,	GR & GR-DEDICATED FUNDS	\$7,287,093	\$8,020,419	\$11,885,190	\$8,690,981	\$8,693,847

**2.B. Summary of Base Request by Method of Finance**

88th Regular Session, Agency Submission, Version 1

Automated Budget and Evaluation System of Texas (ABEST)

Agency code:	<b>71F</b>	Agency name: <b>Texas State Technical College - Ft. Bend</b>			
METHOD OF FINANCING	Exp 2021	Est 2022	Bud 2023	Req 2024	Req 2025
<b>GRAND TOTAL</b>	<b>\$7,287,093</b>	<b>\$8,020,419</b>	<b>\$11,885,190</b>	<b>\$8,690,981</b>	<b>\$8,693,847</b>
<b>FULL-TIME-EQUIVALENT POSITIONS</b>					
REGULAR APPROPRIATIONS					
Regular Appropriations from MOF Table (2020-21 GAA)	79.0	0.0	0.0	0.0	0.0
Regular Appropriations from MOF Table (2022-23 GAA)	0.0	78.8	78.8	78.2	78.2
RIDER APPROPRIATION					
Art IX, Sec 6.10(a)(2), Board or Administrator FTE Adjustment (2020-21 GAA)	(2.4)	(1.1)	(1.1)	0.0	0.0
Art IX, Sec 17.47 Additional Funding for Formula Funding (2022-23 GAA)	0.0	0.5	0.5	0.0	0.0
<b>Comments:</b> Incorporates Article IX, §17.47, 87th Legislature, Regular Session, relating to additional funding for formula funding for Texas State Technical College - Fort Bend, resulting in increases of \$23,233 out of General Revenue Funds and .5 FTEs each fiscal year of the biennium.					
Art IX, Sec 6.10(a)(1), Board or Administrator FTE Adjustment (2022-23 GAA)	0.0	0.0	0.0	0.0	0.0
<b>TOTAL, ADJUSTED FTES</b>	<b>76.6</b>	<b>78.2</b>	<b>78.2</b>	<b>78.2</b>	<b>78.2</b>

**2.B. Summary of Base Request by Method of Finance**

88th Regular Session, Agency Submission, Version 1

Automated Budget and Evaluation System of Texas (ABEST)

---

Agency code:      **71F**

Agency name:      **Texas State Technical College - Ft. Bend**

---

**METHOD OF FINANCING**

**Exp 2021**

**Est 2022**

**Bud 2023**

**Req 2024**

**Req 2025**

---

**NUMBER OF 100% FEDERALLY FUNDED  
FTEs**

**2.C. Summary of Base Request by Object of Expense**

88th Regular Session, Agency Submission, Version 1  
Automated Budget and Evaluation System of Texas (ABEST)

**71F Texas State Technical College - Ft. Bend**

<b>OBJECT OF EXPENSE</b>	<b>Exp 2021</b>	<b>Est 2022</b>	<b>Bud 2023</b>	<b>BL 2024</b>	<b>BL 2025</b>
1001 SALARIES AND WAGES	\$2,169,580	\$2,386,324	\$2,386,324	\$1,732,065	\$1,732,065
1002 OTHER PERSONNEL COSTS	\$148,140	\$319,567	\$321,935	\$205,587	\$208,299
1005 FACULTY SALARIES	\$2,459,220	\$3,007,801	\$3,007,801	\$1,546,445	\$1,546,445
2004 UTILITIES	\$0	\$0	\$0	\$0	\$0
2008 DEBT SERVICE	\$970,144	\$972,469	\$5,032,256	\$4,526,680	\$4,525,194
2009 OTHER OPERATING EXPENSE	\$222,864	\$1,334,258	\$1,136,874	\$680,204	\$681,844
5000 CAPITAL EXPENDITURES	\$1,317,145	\$0	\$0	\$0	\$0
<b>OOE Total (Excluding Riders)</b>	<b>\$7,287,093</b>	<b>\$8,020,419</b>	<b>\$11,885,190</b>	<b>\$8,690,981</b>	<b>\$8,693,847</b>
<b>OOE Total (Riders)</b>					
<b>Grand Total</b>	<b>\$7,287,093</b>	<b>\$8,020,419</b>	<b>\$11,885,190</b>	<b>\$8,690,981</b>	<b>\$8,693,847</b>



**2.D. Summary of Base Request Objective Outcomes**  
88th Regular Session, Agency Submission, Version 1  
Automated Budget and Evaluation system of Texas (ABEST)

<b>71F Texas State Technical College - Ft. Bend</b>					
<b>Goal/ Objective / Outcome</b>	<b>Exp 2021</b>	<b>Est 2022</b>	<b>Bud 2023</b>	<b>BL 2024</b>	<b>BL 2025</b>
1 Provide Instructional and Operations Support <i>1 Provide Instructional and Operations Support</i>					
<b>KEY 1 % of 1st-time, Full-time, Deg or Cert-seeking Students Graduated 3yrs</b>					
	59.00%	60.00%	61.00%	61.00%	62.00%
<b>KEY 2 Number of Associate Degrees and Certificates Awarded Annually</b>					
	237.00	213.00	231.00	228.00	235.00
<b>KEY 3 Number of Minority Students Graduated Annually</b>					
	128.00	143.00	160.00	179.00	200.00
<b>KEY 4 Number of Former Students Found Working One Year After Departing TSTC</b>					
	314.00	372.00	441.00	522.00	619.00
<b>KEY 5 Percent of Former Students Found Working One Year After Departing TSTC</b>					
	66.00%	70.00%	71.00%	70.00%	72.00%
<b>6 Total Ann Salary-Former Stdnts Found Working 1 Yr After Departing TSTC</b>					
	8,381,288.00	8,590,820.00	8,805,591.00	9,025,730.00	9,251,374.00

**2.E. Summary of Exceptional Items Request**  
88th Regular Session, Agency Submission, Version 1  
Automated Budget and Evaluation System of Texas (ABEST)

Agency code: **71F**

Agency name: **Texas State Technical College - Ft. Bend**

		2024			2025			Biennium	
Priority	Item	GR and GR/GR Dedicated	All Funds	FTEs	GR and GR Dedicated	All Funds	FTEs	GR and GR Dedicated	All Funds
1	CDL Program Expansion	\$10,298,896	\$10,298,896	6.0	\$3,351,082	\$3,351,082	7.0	\$13,649,978	\$13,649,978
Total, Exceptional Items Request		\$10,298,896	\$10,298,896	6.0	\$3,351,082	\$3,351,082	7.0	\$13,649,978	\$13,649,978
Method of Financing									
	General Revenue	\$10,298,896	\$10,298,896		\$3,351,082	\$3,351,082		\$13,649,978	\$13,649,978
	General Revenue - Dedicated								
	Federal Funds								
	Other Funds								
		\$10,298,896	\$10,298,896		\$3,351,082	\$3,351,082		\$13,649,978	\$13,649,978
Full Time Equivalent Positions				6.0				7.0	
Number of 100% Federally Funded FTEs									

**2.F. Summary of Total Request by Strategy**  
88th Regular Session, Agency Submission, Version 1  
Automated Budget and Evaluation System of Texas (ABEST)

Agency code: <b>71F</b>	Agency name: <b>Texas State Technical College - Ft. Bend</b>					
<b>Goal/Objective/STRATEGY</b>	<b>Base 2024</b>	<b>Base 2025</b>	<b>Exceptional 2024</b>	<b>Exceptional 2025</b>	<b>Total Request 2024</b>	<b>Total Request 2025</b>
<b>1</b> Provide Instructional and Operations Support						
<b>1</b> <i>Provide Instructional and Operations Support</i>						
<b>3</b> STAFF GROUP INSURANCE PREMIUMS	\$81,461	\$84,173	\$0	\$0	\$81,461	\$84,173
<b>6</b> TEXAS PUBLIC EDUCATION GRANTS	54,341	55,981	0	0	54,341	55,981
<b>TOTAL, GOAL 1</b>	<b>\$135,802</b>	<b>\$140,154</b>	<b>\$0</b>	<b>\$0</b>	<b>\$135,802</b>	<b>\$140,154</b>
<b>2</b> Provide Infrastructure Support						
<b>1</b> <i>Provide Operation and Maintenance of E&amp;G Space</i>						
<b>1</b> E&G SPACE SUPPORT	0	0	0	0	0	0
<b>2</b> CCAP REVENUE BONDS	4,526,680	4,525,194	0	0	4,526,680	4,525,194
<b>5</b> SMALL INSTITUTION SUPPLEMENT	0	0	0	0	0	0
<b>TOTAL, GOAL 2</b>	<b>\$4,526,680</b>	<b>\$4,525,194</b>	<b>\$0</b>	<b>\$0</b>	<b>\$4,526,680</b>	<b>\$4,525,194</b>

**2.F. Summary of Total Request by Strategy**  
88th Regular Session, Agency Submission, Version 1  
Automated Budget and Evaluation System of Texas (ABEST)

Agency code:	71F	Agency name:	Texas State Technical College - Ft. Bend			
Goal/Objective/STRATEGY	Base 2024	Base 2025	Exceptional 2024	Exceptional 2025	Total Request 2024	Total Request 2025
<b>3</b> Provide Non-formula Support						
<b>1</b> <i>Instructional</i>						
<b>1</b> STARTUP FUNDING	\$3,280,708	\$3,280,708	\$0	\$0	\$3,280,708	\$3,280,708
<b>4</b> <i>Institutional</i>						
<b>1</b> INSTITUTIONAL ENHANCEMENT	747,791	747,791	0	0	747,791	747,791
<b>5</b> <i>Exceptional Item Request</i>						
<b>1</b> EXCEPTIONAL ITEM REQUEST	0	0	10,298,896	3,351,082	10,298,896	3,351,082
<b>TOTAL, GOAL 3</b>	<b>\$4,028,499</b>	<b>\$4,028,499</b>	<b>\$10,298,896</b>	<b>\$3,351,082</b>	<b>\$14,327,395</b>	<b>\$7,379,581</b>
<b>TOTAL, AGENCY STRATEGY REQUEST</b>	<b>\$8,690,981</b>	<b>\$8,693,847</b>	<b>\$10,298,896</b>	<b>\$3,351,082</b>	<b>\$18,989,877</b>	<b>\$12,044,929</b>
<b>TOTAL, AGENCY RIDER APPROPRIATIONS REQUEST</b>						
<b>GRAND TOTAL, AGENCY REQUEST</b>	<b>\$8,690,981</b>	<b>\$8,693,847</b>	<b>\$10,298,896</b>	<b>\$3,351,082</b>	<b>\$18,989,877</b>	<b>\$12,044,929</b>



**2.F. Summary of Total Request by Strategy**  
88th Regular Session, Agency Submission, Version 1  
Automated Budget and Evaluation System of Texas (ABEST)

Agency code: 71F		Agency name: Texas State Technical College - Ft. Bend					
Goal/Objective/STRATEGY		Base 2024	Base 2025	Exceptional 2024	Exceptional 2025	Total Request 2024	Total Request 2025
General Revenue Funds:							
1	General Revenue Fund	\$8,555,179	\$8,553,693	\$10,298,896	\$3,351,082	\$18,854,075	\$11,904,775
		\$8,555,179	\$8,553,693	\$10,298,896	\$3,351,082	\$18,854,075	\$11,904,775
General Revenue Dedicated Funds:							
770	Est. Other Educational & General	135,802	140,154	0	0	135,802	140,154
		\$135,802	\$140,154	\$0	\$0	\$135,802	\$140,154
TOTAL, METHOD OF FINANCING		\$8,690,981	\$8,693,847	\$10,298,896	\$3,351,082	\$18,989,877	\$12,044,929
FULL TIME EQUIVALENT POSITIONS		78.2	78.2	6.0	7.0	84.2	85.2

**2.G. Summary of Total Request Objective Outcomes**  
88th Regular Session, Agency Submission, Version 1  
Automated Budget and Evaluation system of Texas (ABEST)

Agency code: **71F**

Agency name: **Texas State Technical College - Ft. Bend**

Goal/ Objective / Outcome

		<b>BL 2024</b>	<b>BL 2025</b>	<b>Excp 2024</b>	<b>Excp 2025</b>	<b>Total Request 2024</b>	<b>Total Request 2025</b>
1	Provide Instructional and Operations Support						
1	<i>Provide Instructional and Operations Support</i>						
<b>KEY</b>	<b>1 % of 1st-time, Full-time, Deg or Cert-seeking Students Graduated 3yrs</b>						
		61.00%	62.00%			61.00%	62.00%
<b>KEY</b>	<b>2 Number of Associate Degrees and Certificates Awarded Annually</b>						
		228.00	235.00			228.00	235.00
<b>KEY</b>	<b>3 Number of Minority Students Graduated Annually</b>						
		179.00	200.00			179.00	200.00
<b>KEY</b>	<b>4 Number of Former Students Found Working One Year After Departing TSTC</b>						
		522.00	619.00			522.00	619.00
<b>KEY</b>	<b>5 Percent of Former Students Found Working One Year After Departing TSTC</b>						
		70.00%	72.00%			70.00%	72.00%
	<b>6 Total Ann Salary-Former Stdnts Found Working 1 Yr After Departing TSTC</b>						
		9,025,730.00	9,251,374.00			9,025,730.00	9,251,374.00

**3.A. Strategy Request**  
88th Regular Session, Agency Submission, Version 1  
Automated Budget and Evaluation System of Texas (ABEST)

**71F Texas State Technical College - Ft. Bend**

GOAL: 1 Provide Instructional and Operations Support  
OBJECTIVE: 1 Provide Instructional and Operations Support  
STRATEGY: 1 Instruction and Administration

Service Categories:

Service: 19 Income: A.1 Age: B.3

CODE	DESCRIPTION	Exp 2021	Est 2022	Bud 2023	(1) BL 2024	(1) BL 2025
<b>Output Measures:</b>						
	1 Number of Contact Hours Taught Annually	512,848.00	453,552.00	462,623.04	471,875.50	481,313.01
	2 % of Contact Hours Completed Annually at End of Rptg Period	91.64 %	99.00 %	99.00 %	99.00 %	99.00 %
	3 Fall Headcount	786.00	980.00	999.60	1,019.59	1,039.98
	4 Number of Minority Students Enrolled Annually	640.00	643.00	655.86	668.98	682.36
KEY	5 Annual Headcount Enrollment	1,205.00	1,302.00	1,328.04	1,354.60	1,381.69
	6 Number of Semester Credit Hours Taught Annually	16,759.00	14,865.00	15,162.30	15,465.55	15,774.86
	7 % Semester Credit Hours Completed at the End of the Reporting Period	83.75 %	99.00 %	99.00 %	99.00 %	99.00 %
<b>Efficiency Measures:</b>						
KEY	1 Administrative Cost as a Percent of Operating Budget	8.68 %	9.02 %	9.02 %	9.02 %	9.02 %
<b>TOTAL, METHOD OF FINANCE (INCLUDING RIDERS)</b>						
<b>TOTAL, METHOD OF FINANCE (EXCLUDING RIDERS)</b>						
<b>FULL TIME EQUIVALENT POSITIONS:</b>						

(1) - Formula funded strategies are not requested in 2024-25 because amounts are not determined by institutions.

**3.A. Strategy Request**  
88th Regular Session, Agency Submission, Version 1  
Automated Budget and Evaluation System of Texas (ABEST)

**71F Texas State Technical College - Ft. Bend**

GOAL: 1 Provide Instructional and Operations Support  
OBJECTIVE: 1 Provide Instructional and Operations Support  
STRATEGY: 1 Instruction and Administration

Service Categories:

Service: 19 Income: A.1 Age: B.3

CODE	DESCRIPTION	Exp 2021	Est 2022	Bud 2023	BL 2024 <sup>(1)</sup>	BL 2025 <sup>(1)</sup>
------	-------------	----------	----------	----------	------------------------	------------------------

**STRATEGY DESCRIPTION AND JUSTIFICATION:**

In the General Appropriations Act, HB 1, 84th Texas Legislature, Section 11 (page III-224), allocated funding among Texas State Technical Colleges (TSTC) based on the additional direct and indirect state tax revenues generated as a result of the education provided. This formula furthers the goal of rewarding job placement and graduate earnings projections, not time in training or contact hours. This funding facilitates the provision of industry standard, state-of-the-art education and training in high priority careers.

**EXTERNAL/INTERNAL FACTORS IMPACTING STRATEGY:**

Texas businesses in key industries are unable to find enough sufficiently trained workers to fill available, middle-skill jobs (those which require credentials between high school and a four-year college degree). Consequently, many Texas employers are left unable to grow and innovate, restricting their ability to compete in the current economy. This growing need for workers in middle-skill occupations is concentrated in the STEM fields, TSTC's primary focus. According to the U.S. Census Bureau, Fort Bend County ranked 4th in the United States for percentage growth during 2014-2015.

**EXPLANATION OF BIENNIAL CHANGE (includes Rider amounts):**

<u>STRATEGY BIENNIAL TOTAL - ALL FUNDS</u>		BIENNIAL	<u>EXPLANATION OF BIENNIAL CHANGE</u>	
Base Spending ( + )	Baseline Request ( + )	CHANGE	\$ Amount	Explanation(s) of Amount (must specify MOFs and FTEs)
			<b>\$0</b>	<b>Total of Explanation of Biennial Change</b>

(1) - Formula funded strategies are not requested in 2024-25 because amounts are not determined by institutions.

**3.A. Strategy Request**  
88th Regular Session, Agency Submission, Version 1  
Automated Budget and Evaluation System of Texas (ABEST)

**71F Texas State Technical College - Ft. Bend**

GOAL: 1 Provide Instructional and Operations Support  
OBJECTIVE: 1 Provide Instructional and Operations Support  
STRATEGY: 3 Staff Group Insurance Premiums

Service Categories:

Service: 06 Income: A.2 Age: B.3

CODE	DESCRIPTION	Exp 2021	Est 2022	Bud 2023	BL 2024	BL 2025
<b>Objects of Expense:</b>						
1002	OTHER PERSONNEL COSTS	\$24,928	\$33,830	\$36,198	\$38,732	\$41,444
2009	OTHER OPERATING EXPENSE	\$42,393	\$42,729	\$42,729	\$42,729	\$42,729
<b>TOTAL, OBJECT OF EXPENSE</b>		<b>\$67,321</b>	<b>\$76,559</b>	<b>\$78,927</b>	<b>\$81,461</b>	<b>\$84,173</b>
<b>Method of Financing:</b>						
1	General Revenue Fund	\$42,393	\$42,729	\$42,729	\$0	\$0
<b>SUBTOTAL, MOF (GENERAL REVENUE FUNDS)</b>		<b>\$42,393</b>	<b>\$42,729</b>	<b>\$42,729</b>	<b>\$0</b>	<b>\$0</b>
<b>Method of Financing:</b>						
770	Est. Other Educational & General	\$24,928	\$33,830	\$36,198	\$81,461	\$84,173
<b>SUBTOTAL, MOF (GENERAL REVENUE FUNDS - DEDICATED)</b>		<b>\$24,928</b>	<b>\$33,830</b>	<b>\$36,198</b>	<b>\$81,461</b>	<b>\$84,173</b>
<b>TOTAL, METHOD OF FINANCE (INCLUDING RIDERS)</b>					<b>\$81,461</b>	<b>\$84,173</b>
<b>TOTAL, METHOD OF FINANCE (EXCLUDING RIDERS)</b>		<b>\$67,321</b>	<b>\$76,559</b>	<b>\$78,927</b>	<b>\$81,461</b>	<b>\$84,173</b>
<b>FULL TIME EQUIVALENT POSITIONS:</b>						

**3.A. Strategy Request**  
88th Regular Session, Agency Submission, Version 1  
Automated Budget and Evaluation System of Texas (ABEST)

**71F Texas State Technical College - Ft. Bend**

GOAL: 1 Provide Instructional and Operations Support  
OBJECTIVE: 1 Provide Instructional and Operations Support Service Categories:  
STRATEGY: 3 Staff Group Insurance Premiums Service: 06 Income: A.2 Age: B.3

CODE	DESCRIPTION	Exp 2021	Est 2022	Bud 2023	BL 2024	BL 2025
------	-------------	----------	----------	----------	---------	---------

**STRATEGY DESCRIPTION AND JUSTIFICATION:**

This strategy is to provide proportional share of staff group insurance premiums paid from Other Educational and General funds.

**EXTERNAL/INTERNAL FACTORS IMPACTING STRATEGY:**

Influencing factors include the number of personnel working 30 hours or more and the change in premium rates.

Strategy based upon percentage of estimated other E&G income to total appropriation. There is a general revenue shortfall for group insurance; therefore, other strategies must supplement group insurance expenditures.

**EXPLANATION OF BIENNIAL CHANGE (includes Rider amounts):**

STRATEGY BIENNIAL TOTAL - ALL FUNDS		BIENNIAL CHANGE	EXPLANATION OF BIENNIAL CHANGE	
Base Spending (Est 2022 + Bud 2023)	Baseline Request (BL 2024 + BL 2025)		\$ Amount	Explanation(s) of Amount (must specify MOFs and FTEs)
\$155,486	\$165,634	\$10,148	\$10,148	Increase in group insurance premiums. MOF-Other E&G. FTEs-0.
			<b>\$10,148</b>	<b>Total of Explanation of Biennial Change</b>

**3.A. Strategy Request**  
88th Regular Session, Agency Submission, Version 1  
Automated Budget and Evaluation System of Texas (ABEST)

**71F Texas State Technical College - Ft. Bend**

GOAL: 1 Provide Instructional and Operations Support  
OBJECTIVE: 1 Provide Instructional and Operations Support  
STRATEGY: 6 Texas Public Education Grants

Service Categories:

Service: 20 Income: A.1 Age: B.3

CODE	DESCRIPTION	Exp 2021	Est 2022	Bud 2023	BL 2024	BL 2025
<b>Objects of Expense:</b>						
2009	OTHER OPERATING EXPENSE	\$50,303	\$56,146	\$52,768	\$54,341	\$55,981
<b>TOTAL, OBJECT OF EXPENSE</b>		<b>\$50,303</b>	<b>\$56,146</b>	<b>\$52,768</b>	<b>\$54,341</b>	<b>\$55,981</b>
<b>Method of Financing:</b>						
770	Est. Other Educational & General	\$50,303	\$56,146	\$52,768	\$54,341	\$55,981
<b>SUBTOTAL, MOF (GENERAL REVENUE FUNDS - DEDICATED)</b>		<b>\$50,303</b>	<b>\$56,146</b>	<b>\$52,768</b>	<b>\$54,341</b>	<b>\$55,981</b>
<b>TOTAL, METHOD OF FINANCE (INCLUDING RIDERS)</b>					<b>\$54,341</b>	<b>\$55,981</b>
<b>TOTAL, METHOD OF FINANCE (EXCLUDING RIDERS)</b>		<b>\$50,303</b>	<b>\$56,146</b>	<b>\$52,768</b>	<b>\$54,341</b>	<b>\$55,981</b>

**FULL TIME EQUIVALENT POSITIONS:**

**STRATEGY DESCRIPTION AND JUSTIFICATION:**

To provide for grants to College students as prescribed by the VTCA 56.037.

**EXTERNAL/INTERNAL FACTORS IMPACTING STRATEGY:**

The level of funds set-aside from tuition for use under TPEG is directly correlated with total enrollment.

**3.A. Strategy Request**  
88th Regular Session, Agency Submission, Version 1  
Automated Budget and Evaluation System of Texas (ABEST)

**71F Texas State Technical College - Ft. Bend**

GOAL: 1 Provide Instructional and Operations Support  
OBJECTIVE: 1 Provide Instructional and Operations Support  
STRATEGY: 6 Texas Public Education Grants

Service Categories:

Service: 20 Income: A.1 Age: B.3

CODE	DESCRIPTION	Exp 2021	Est 2022	Bud 2023	BL 2024	BL 2025
------	-------------	----------	----------	----------	---------	---------

**EXPLANATION OF BIENNIAL CHANGE (includes Rider amounts):**

<u>STRATEGY BIENNIAL TOTAL - ALL FUNDS</u>		<u>BIENNIAL CHANGE</u>	<u>EXPLANATION OF BIENNIAL CHANGE</u>	
<u>Base Spending (Est 2022 + Bud 2023)</u>	<u>Baseline Request (BL 2024 + BL 2025)</u>		<u>\$ Amount</u>	<u>Explanation(s) of Amount (must specify MOFs and FTEs)</u>
\$108,914	\$110,322	\$1,408	\$1,408	Increase in enrollment. MOF-Other E&G. FTEs-0.
			<b>\$1,408</b>	<b>Total of Explanation of Biennial Change</b>



**3.A. Strategy Request**  
88th Regular Session, Agency Submission, Version 1  
Automated Budget and Evaluation System of Texas (ABEST)

**71F Texas State Technical College - Ft. Bend**

GOAL: 2 Provide Infrastructure Support

OBJECTIVE: 1 Provide Operation and Maintenance of E&G Space

STRATEGY: 1 Educational and General Space Support

Service Categories:

Service: 10

Income: A.1

Age: B.3

CODE	DESCRIPTION	Exp 2021	Est 2022	Bud 2023	(1) BL 2024	(1) BL 2025
<b>Objects of Expense:</b>						
1001	SALARIES AND WAGES	\$128,406	\$136,430	\$136,430	\$0	\$0
1002	OTHER PERSONNEL COSTS	\$5,413	\$6,609	\$6,609	\$0	\$0
2004	UTILITIES	\$0	\$0	\$0	\$0	\$0
2009	OTHER OPERATING EXPENSE	\$600	\$88,480	\$88,480	\$0	\$0
<b>TOTAL, OBJECT OF EXPENSE</b>		<b>\$134,419</b>	<b>\$231,519</b>	<b>\$231,519</b>	<b>\$0</b>	<b>\$0</b>
<b>Method of Financing:</b>						
1	General Revenue Fund	\$299,717	\$522,515	\$521,855	\$0	\$0
<b>SUBTOTAL, MOF (GENERAL REVENUE FUNDS)</b>		<b>\$299,717</b>	<b>\$522,515</b>	<b>\$521,855</b>	<b>\$0</b>	<b>\$0</b>
<b>Method of Financing:</b>						
770	Est. Other Educational & General	\$(165,298)	\$(290,996)	\$(290,336)	\$0	\$0
<b>SUBTOTAL, MOF (GENERAL REVENUE FUNDS - DEDICATED)</b>		<b>\$(165,298)</b>	<b>\$(290,996)</b>	<b>\$(290,336)</b>	<b>\$0</b>	<b>\$0</b>

(1) - Formula funded strategies are not requested in 2024-25 because amounts are not determined by institutions.

**3.A. Strategy Request**  
88th Regular Session, Agency Submission, Version 1  
Automated Budget and Evaluation System of Texas (ABEST)

**71F Texas State Technical College - Ft. Bend**

GOAL:	2	Provide Infrastructure Support				
OBJECTIVE:	1	Provide Operation and Maintenance of E&G Space			Service Categories:	
STRATEGY:	1	Educational and General Space Support			Service: 10	Income: A.1      Age: B.3
<b>CODE</b>		<b>DESCRIPTION</b>	<b>Exp 2021</b>	<b>Est 2022</b>	<b>Bud 2023</b>	<b>BL 2024</b> <sup>(1)</sup> <b>BL 2025</b> <sup>(1)</sup>
<b>TOTAL, METHOD OF FINANCE (INCLUDING RIDERS)</b>						<b>\$0</b> <b>\$0</b>
<b>TOTAL, METHOD OF FINANCE (EXCLUDING RIDERS)</b>			<b>\$134,419</b>	<b>\$231,519</b>	<b>\$231,519</b>	<b>\$0</b> <b>\$0</b>
<b>FULL TIME EQUIVALENT POSITIONS:</b>			<b>4.0</b>	<b>2.9</b>	<b>2.9</b>	<b>2.9</b> <b>2.9</b>

**STRATEGY DESCRIPTION AND JUSTIFICATION:**

To provide operation, maintenance, and support for E & G facilities, network services and grounds, which are essential to TSTC in Fort Bend.

**EXTERNAL/INTERNAL FACTORS IMPACTING STRATEGY:**

Influencing factors include the cost of goods, services and utilities, as well as progress on deferred maintenance, efforts in energy efficiency and management, and centralized System network services.

**EXPLANATION OF BIENNIAL CHANGE (includes Rider amounts):**

<u>STRATEGY BIENNIAL TOTAL - ALL FUNDS</u>		<u>BIENNIAL CHANGE</u>	<u>EXPLANATION OF BIENNIAL CHANGE</u>	
<u>Base Spending (Est 2022 + Bud 2023)</u>	<u>Baseline Request (BL 2024 + BL 2025)</u>		<u>\$ Amount</u>	<u>Explanation(s) of Amount (must specify MOFs and FTEs)</u>
\$463,038	\$0	\$(463,038)	\$(463,038)	Formula Funding for FY2024 and FY2025.
			<b>\$(463,038)</b>	<b>Total of Explanation of Biennial Change</b>

(1) - Formula funded strategies are not requested in 2024-25 because amounts are not determined by institutions.

**3.A. Strategy Request**  
88th Regular Session, Agency Submission, Version 1  
Automated Budget and Evaluation System of Texas (ABEST)

**71F Texas State Technical College - Ft. Bend**

GOAL: 2 Provide Infrastructure Support  
OBJECTIVE: 1 Provide Operation and Maintenance of E&G Space  
STRATEGY: 2 Capital Construction Assistance Projects Revenue Bonds

Service Categories:

Service: 10 Income: A.2 Age: B.3

CODE	DESCRIPTION	Exp 2021	Est 2022	Bud 2023	BL 2024	BL 2025
<b>Objects of Expense:</b>						
2008	DEBT SERVICE	\$970,144	\$972,469	\$5,032,256	\$4,526,680	\$4,525,194
<b>TOTAL, OBJECT OF EXPENSE</b>		<b>\$970,144</b>	<b>\$972,469</b>	<b>\$5,032,256</b>	<b>\$4,526,680</b>	<b>\$4,525,194</b>
<b>Method of Financing:</b>						
1	General Revenue Fund	\$970,144	\$972,469	\$5,032,256	\$4,526,680	\$4,525,194
<b>SUBTOTAL, MOF (GENERAL REVENUE FUNDS)</b>		<b>\$970,144</b>	<b>\$972,469</b>	<b>\$5,032,256</b>	<b>\$4,526,680</b>	<b>\$4,525,194</b>
<b>TOTAL, METHOD OF FINANCE (INCLUDING RIDERS)</b>					<b>\$4,526,680</b>	<b>\$4,525,194</b>
<b>TOTAL, METHOD OF FINANCE (EXCLUDING RIDERS)</b>		<b>\$970,144</b>	<b>\$972,469</b>	<b>\$5,032,256</b>	<b>\$4,526,680</b>	<b>\$4,525,194</b>

**FULL TIME EQUIVALENT POSITIONS:**

**STRATEGY DESCRIPTION AND JUSTIFICATION:**

This strategy is essential for the College to meet the annual debt service requirements for the Tuition Revenue Bonds issued during FY 2016, as authorized by the 84th Texas Legislature. The FY 2016 TRB was issued at a lower interest rate than expected, thereby resulting in savings for the state.

This strategy is essential for the College to meet the annual debt service requirement for the Capital Construction Assistance Project Revenue Bonds that will be issued during FY 2023, as authorized by the 87th Texas Legislature, S. B. No. 52, Sec. 55.17991, for TSTC in Fort Bend County campus expansion.

**3.A. Strategy Request**  
88th Regular Session, Agency Submission, Version 1  
Automated Budget and Evaluation System of Texas (ABEST)

**71F Texas State Technical College - Ft. Bend**

GOAL: 2 Provide Infrastructure Support

OBJECTIVE: 1 Provide Operation and Maintenance of E&G Space Service Categories:

STRATEGY: 2 Capital Construction Assistance Projects Revenue Bonds Service: 10 Income: A.2 Age: B.3

CODE	DESCRIPTION	Exp 2021	Est 2022	Bud 2023	BL 2024	BL 2025
------	-------------	----------	----------	----------	---------	---------

**EXTERNAL/INTERNAL FACTORS IMPACTING STRATEGY:**

TRB and CCAP funds used for new construction is enabling the college to better serve the needs of our students in technical education.

**EXPLANATION OF BIENNIAL CHANGE (includes Rider amounts):**

<u>STRATEGY BIENNIAL TOTAL - ALL FUNDS</u>		<u>BIENNIAL CHANGE</u>	<u>EXPLANATION OF BIENNIAL CHANGE</u>	
<u>Base Spending (Est 2022 + Bud 2023)</u>	<u>Baseline Request (BL 2024 + BL 2025)</u>		<u>\$ Amount</u>	<u>Explanation(s) of Amount (must specify MOFs and FTEs)</u>
\$6,004,725	\$9,051,874	\$3,047,149	\$3,047,149	New debt service appropriated in S. B. No. 52, Sec. 55.17991. MOF-GR. FTEs-0.
			<b>\$3,047,149</b>	<b>Total of Explanation of Biennial Change</b>

**3.A. Strategy Request**  
88th Regular Session, Agency Submission, Version 1  
Automated Budget and Evaluation System of Texas (ABEST)

**71F Texas State Technical College - Ft. Bend**

GOAL: 2 Provide Infrastructure Support

OBJECTIVE: 1 Provide Operation and Maintenance of E&G Space

STRATEGY: 5 Small Institution Supplement

Service Categories:

Service: 19 Income: A.1 Age: B.3

CODE	DESCRIPTION	Exp 2021	Est 2022	Bud 2023	(1) BL 2024	(1) BL 2025
<b>Objects of Expense:</b>						
1001	SALARIES AND WAGES	\$79,314	\$45,916	\$45,916	\$0	\$0
1002	OTHER PERSONNEL COSTS	\$23,974	\$41,291	\$41,291	\$0	\$0
1005	FACULTY SALARIES	\$688,187	\$719,526	\$719,526	\$0	\$0
2004	UTILITIES	\$0	\$0	\$0	\$0	\$0
2009	OTHER OPERATING EXPENSE	\$0	\$285,000	\$285,000	\$0	\$0
<b>TOTAL, OBJECT OF EXPENSE</b>		<b>\$791,475</b>	<b>\$1,091,733</b>	<b>\$1,091,733</b>	<b>\$0</b>	<b>\$0</b>
<b>Method of Financing:</b>						
1	General Revenue Fund	\$658,283	\$658,283	\$658,283	\$0	\$0
<b>SUBTOTAL, MOF (GENERAL REVENUE FUNDS)</b>		<b>\$658,283</b>	<b>\$658,283</b>	<b>\$658,283</b>	<b>\$0</b>	<b>\$0</b>
<b>Method of Financing:</b>						
770	Est. Other Educational & General	\$133,192	\$433,450	\$433,450	\$0	\$0
<b>SUBTOTAL, MOF (GENERAL REVENUE FUNDS - DEDICATED)</b>		<b>\$133,192</b>	<b>\$433,450</b>	<b>\$433,450</b>	<b>\$0</b>	<b>\$0</b>

(1) - Formula funded strategies are not requested in 2024-25 because amounts are not determined by institutions.

**3.A. Strategy Request**  
88th Regular Session, Agency Submission, Version 1  
Automated Budget and Evaluation System of Texas (ABEST)

**71F Texas State Technical College - Ft. Bend**

GOAL:	2	Provide Infrastructure Support				
OBJECTIVE:	1	Provide Operation and Maintenance of E&G Space			Service Categories:	
STRATEGY:	5	Small Institution Supplement			Service: 19	Income: A.1      Age: B.3
CODE	DESCRIPTION	Exp 2021	Est 2022	Bud 2023	BL 2024 <sup>(1)</sup>	BL 2025 <sup>(1)</sup>
<b>TOTAL, METHOD OF FINANCE (INCLUDING RIDERS)</b>					<b>\$0</b>	<b>\$0</b>
<b>TOTAL, METHOD OF FINANCE (EXCLUDING RIDERS)</b>		<b>\$791,475</b>	<b>\$1,091,733</b>	<b>\$1,091,733</b>	<b>\$0</b>	<b>\$0</b>
<b>FULL TIME EQUIVALENT POSITIONS:</b>		<b>11.0</b>	<b>11.3</b>	<b>11.3</b>	<b>11.3</b>	<b>11.3</b>

**STRATEGY DESCRIPTION AND JUSTIFICATION:**

The Small Institution Supplement strategy provides \$1,316,566 during a biennium for institutions that enroll less than 5,000 students (phased out between 5,000 and 10,000), recognizing that institutions have a minimum cost of operation that may not be covered by funds generated through the formulas. The 84 th Texas Legislature in Texas Education Code (TEC), section 135.02(a), authorized designation of TSTC in Fort Bend County as a campus. Under the criteria established by the 81st Legislature, this new campus qualifies for Small Institution Supplement funding.

**EXTERNAL/INTERNAL FACTORS IMPACTING STRATEGY:**

(1) - Formula funded strategies are not requested in 2024-25 because amounts are not determined by institutions.

**3.A. Strategy Request**  
88th Regular Session, Agency Submission, Version 1  
Automated Budget and Evaluation System of Texas (ABEST)

**71F Texas State Technical College - Ft. Bend**

GOAL: 2 Provide Infrastructure Support

OBJECTIVE: 1 Provide Operation and Maintenance of E&G Space

STRATEGY: 5 Small Institution Supplement

Service Categories:

Service: 19 Income: A.1 Age: B.3

CODE	DESCRIPTION	Exp 2021	Est 2022	Bud 2023	BL 2024 <sup>(1)</sup>	BL 2025 <sup>(1)</sup>
------	-------------	----------	----------	----------	------------------------	------------------------

**EXPLANATION OF BIENNIAL CHANGE (includes Rider amounts):**

<u>STRATEGY BIENNIAL TOTAL - ALL FUNDS</u>		<u>BIENNIAL CHANGE</u>	<u>EXPLANATION OF BIENNIAL CHANGE</u>		
<u>Base Spending (Est 2022 + Bud 2023)</u>	<u>Baseline Request (BL 2024 + BL 2025)</u>		<u>\$ Amount</u>	<u>Explanation(s) of Amount (must specify MOFs and FTEs)</u>	
\$2,183,466	\$0	\$(2,183,466)	\$(2,183,466)	Formula funding for FY2024 and FY2025.	
			<b>\$(2,183,466)</b>	<b>Total of Explanation of Biennial Change</b>	

(1) - Formula funded strategies are not requested in 2024-25 because amounts are not determined by institutions.

**3.A. Strategy Request**  
88th Regular Session, Agency Submission, Version 1  
Automated Budget and Evaluation System of Texas (ABEST)

**71F Texas State Technical College - Ft. Bend**

GOAL: 3 Provide Non-formula Support  
OBJECTIVE: 1 Instructional  
STRATEGY: 1 Startup Funding

Service Categories:

Service: 19 Income: A.2 Age: B.3

CODE	DESCRIPTION	Exp 2021	Est 2022	Bud 2023	BL 2024	BL 2025
<b>Objects of Expense:</b>						
1001	SALARIES AND WAGES	\$1,303,105	\$1,486,475	\$1,486,475	\$1,004,578	\$1,004,578
1002	OTHER PERSONNEL COSTS	\$77,894	\$219,732	\$219,732	\$148,498	\$148,498
1005	FACULTY SALARIES	\$1,771,033	\$2,288,275	\$2,288,275	\$1,546,445	\$1,546,445
2009	OTHER OPERATING EXPENSE	\$127,848	\$859,983	\$665,977	\$581,187	\$581,187
5000	CAPITAL EXPENDITURES	\$1,317,145	\$0	\$0	\$0	\$0
<b>TOTAL, OBJECT OF EXPENSE</b>		<b>\$4,597,025</b>	<b>\$4,854,465</b>	<b>\$4,660,459</b>	<b>\$3,280,708</b>	<b>\$3,280,708</b>
<b>Method of Financing:</b>						
1	General Revenue Fund	\$4,507,140	\$5,319,779	\$4,537,979	\$3,280,708	\$3,280,708
<b>SUBTOTAL, MOF (GENERAL REVENUE FUNDS)</b>		<b>\$4,507,140</b>	<b>\$5,319,779</b>	<b>\$4,537,979</b>	<b>\$3,280,708</b>	<b>\$3,280,708</b>
<b>Method of Financing:</b>						
770	Est. Other Educational & General	\$89,885	\$(465,314)	\$122,480	\$0	\$0
<b>SUBTOTAL, MOF (GENERAL REVENUE FUNDS - DEDICATED)</b>		<b>\$89,885</b>	<b>\$(465,314)</b>	<b>\$122,480</b>	<b>\$0</b>	<b>\$0</b>



**3.A. Strategy Request**  
88th Regular Session, Agency Submission, Version 1  
Automated Budget and Evaluation System of Texas (ABEST)

**71F Texas State Technical College - Ft. Bend**

GOAL: 3 Provide Non-formula Support

OBJECTIVE: 1 Instructional

Service Categories:

STRATEGY: 1 Startup Funding

Service: 19 Income: A.2 Age: B.3

CODE	DESCRIPTION	Exp 2021	Est 2022	Bud 2023	BL 2024	BL 2025
<b>TOTAL, METHOD OF FINANCE (INCLUDING RIDERS)</b>					<b>\$3,280,708</b>	<b>\$3,280,708</b>
<b>TOTAL, METHOD OF FINANCE (EXCLUDING RIDERS)</b>		<b>\$4,597,025</b>	<b>\$4,854,465</b>	<b>\$4,660,459</b>	<b>\$3,280,708</b>	<b>\$3,280,708</b>
<b>FULL TIME EQUIVALENT POSITIONS:</b>		<b>46.6</b>	<b>44.2</b>	<b>44.2</b>	<b>44.2</b>	<b>44.2</b>

**STRATEGY DESCRIPTION AND JUSTIFICATION:**

TSTC's funding model for Instruction and Administration, the "returned value" (RTV) funding model, only funds results; consequently, it does not provide funding for start-up operations like other cost-reimbursement (e.g., contact-hour based) models. RTV funding returns a portion of the economic value to the state generated from wages earned (over five years) by former students. Consequently, there is an 8-10 year inherent lag between the campus start-up, teaching event, the students' 5-year earnings contribution, the funding formula measurement, and the allocation through appropriations funding. For start-up locations, significant costs accumulate during this time.

Basic start-up costs include, but are not limited to, operations personnel, debt service on financed equipment (TSTC's programs require costly, industrial equipment), and consumables (many programs have significant consumable cost, such as welding rods), and advertising costs. Start-up administrative costs are mitigated by TSTC's centralized administration structure.

As student earnings begin to reach the end of the 5-year measurement period, the funding formula will recognize these results and the need for transition funding will decline.

**EXTERNAL/INTERNAL FACTORS IMPACTING STRATEGY:**

**3.A. Strategy Request**  
88th Regular Session, Agency Submission, Version 1  
Automated Budget and Evaluation System of Texas (ABEST)

**71F Texas State Technical College - Ft. Bend**

GOAL: 3 Provide Non-formula Support  
OBJECTIVE: 1 Instructional  
STRATEGY: 1 Startup Funding

Service Categories:

Service: 19 Income: A.2 Age: B.3

CODE	DESCRIPTION	Exp 2021	Est 2022	Bud 2023	BL 2024	BL 2025
------	-------------	----------	----------	----------	---------	---------

Transition funding is a substitute for the formula-funded line items since the returned-value funding formula is outcome based, deriving the formula yield after the teaching event and five trailing years of earnings results. Since it is not a cost-recovery formula, start-up costs require funding from another mechanism. Only after (1) the campus is open, (2) the student navigates the curriculum, and (3) earnings for five years are measured after leaving TSTC will the formula funding be activated. Consequently, transition funding will begin dissipating 6-8 years after the first cohorts enter the workforce. Due to the operational nature of transition funding, not exempting TSTC transition funding from based reductions is inconsistent with the exemptions to formula-funded appropriations.

Start-up costs for technical training are extraordinarily high because of the space and capital equipment required to deliver the hands-on, industrial training necessary for these new campus locations. This exceptional item request restores that funding to consistently apply the reduction strategy and support essential start up operations.

**EXPLANATION OF BIENNIAL CHANGE (includes Rider amounts):**

<u>STRATEGY BIENNIAL TOTAL - ALL FUNDS</u>		<u>BIENNIAL CHANGE</u>	<u>EXPLANATION OF BIENNIAL CHANGE</u>	
<u>Base Spending (Est 2022 + Bud 2023)</u>	<u>Baseline Request (BL 2024 + BL 2025)</u>		<u>\$ Amount</u>	<u>Explanation(s) of Amount (must specify MOFs and FTEs)</u>
\$9,514,924	\$6,561,416	\$(2,953,508)	\$(2,953,508)	Transfers are not reflected in FY2024 and FY2025 because the actual amount is unknown and GR amount request only for FY2024 and FY2025. MOF-Other E&G. FTEs-0.
			<u>\$(2,953,508)</u>	<b>Total of Explanation of Biennial Change</b>

**3.A. Strategy Request**  
88th Regular Session, Agency Submission, Version 1  
Automated Budget and Evaluation System of Texas (ABEST)

**71F Texas State Technical College - Ft. Bend**

GOAL: 3 Provide Non-formula Support  
OBJECTIVE: 4 Institutional  
STRATEGY: 1 Institutional Enhancement

Service Categories:

Service: 19 Income: A.2 Age: B.3

CODE	DESCRIPTION	Exp 2021	Est 2022	Bud 2023	BL 2024	BL 2025
<b>Objects of Expense:</b>						
1001	SALARIES AND WAGES	\$658,755	\$717,503	\$717,503	\$727,487	\$727,487
1002	OTHER PERSONNEL COSTS	\$15,931	\$18,105	\$18,105	\$18,357	\$18,357
2009	OTHER OPERATING EXPENSE	\$1,720	\$1,920	\$1,920	\$1,947	\$1,947
<b>TOTAL, OBJECT OF EXPENSE</b>		<b>\$676,406</b>	<b>\$737,528</b>	<b>\$737,528</b>	<b>\$747,791</b>	<b>\$747,791</b>
<b>Method of Financing:</b>						
1	General Revenue Fund	\$747,791	\$747,791	\$747,791	\$747,791	\$747,791
<b>SUBTOTAL, MOF (GENERAL REVENUE FUNDS)</b>		<b>\$747,791</b>	<b>\$747,791</b>	<b>\$747,791</b>	<b>\$747,791</b>	<b>\$747,791</b>
<b>Method of Financing:</b>						
770	Est. Other Educational & General	\$(71,385)	\$(10,263)	\$(10,263)	\$0	\$0
<b>SUBTOTAL, MOF (GENERAL REVENUE FUNDS - DEDICATED)</b>		<b>\$(71,385)</b>	<b>\$(10,263)</b>	<b>\$(10,263)</b>	<b>\$0</b>	<b>\$0</b>
<b>TOTAL, METHOD OF FINANCE (INCLUDING RIDERS)</b>					<b>\$747,791</b>	<b>\$747,791</b>
<b>TOTAL, METHOD OF FINANCE (EXCLUDING RIDERS)</b>		<b>\$676,406</b>	<b>\$737,528</b>	<b>\$737,528</b>	<b>\$747,791</b>	<b>\$747,791</b>
<b>FULL TIME EQUIVALENT POSITIONS:</b>		<b>15.0</b>	<b>19.8</b>	<b>19.8</b>	<b>19.8</b>	<b>19.8</b>

**3.A. Strategy Request**  
88th Regular Session, Agency Submission, Version 1  
Automated Budget and Evaluation System of Texas (ABEST)

**71F Texas State Technical College - Ft. Bend**

GOAL: 3 Provide Non-formula Support

OBJECTIVE: 4 Institutional

STRATEGY: 1 Institutional Enhancement

Service Categories:

Service: 19 Income: A.2 Age: B.3

CODE	DESCRIPTION	Exp 2021	Est 2022	Bud 2023	BL 2024	BL 2025
------	-------------	----------	----------	----------	---------	---------

**STRATEGY DESCRIPTION AND JUSTIFICATION:**

Provides funding necessary for proper functioning of the College operations. Funds are used to support E&G components including career services, institutional planning, assessment, instructional support, and new program development.

**EXTERNAL/INTERNAL FACTORS IMPACTING STRATEGY:**

Influencing factors include the demand for new programs and student services.

**EXPLANATION OF BIENNIAL CHANGE (includes Rider amounts):**

<u>STRATEGY BIENNIAL TOTAL - ALL FUNDS</u>		<u>BIENNIAL CHANGE</u>	<u>EXPLANATION OF BIENNIAL CHANGE</u>	
<u>Base Spending (Est 2022 + Bud 2023)</u>	<u>Baseline Request (BL 2024 + BL 2025)</u>		<u>\$ Amount</u>	<u>Explanation(s) of Amount (must specify MOFs and FTEs)</u>
\$1,475,056	\$1,495,582	\$20,526	\$20,526	GR amount request only for FY2024 and FY2025. MOF-Other E&G. FTEs-0.
			<b>\$20,526</b>	<b>Total of Explanation of Biennial Change</b>

**3.A. Strategy Request**  
88th Regular Session, Agency Submission, Version 1  
Automated Budget and Evaluation System of Texas (ABEST)

**71F Texas State Technical College - Ft. Bend**

GOAL: 3 Provide Non-formula Support

OBJECTIVE: 5 Exceptional Item Request

STRATEGY: 1 Exceptional Item Request

Service Categories:

Service: 19

Income: A.2

Age: B.3

CODE	DESCRIPTION	Exp 2021	Est 2022	Bud 2023	BL 2024	BL 2025
<b>Objects of Expense:</b>						
1001	SALARIES AND WAGES	\$0	\$0	\$0	\$0	\$0
2009	OTHER OPERATING EXPENSE	\$0	\$0	\$0	\$0	\$0
5000	CAPITAL EXPENDITURES	\$0	\$0	\$0	\$0	\$0
<b>TOTAL, OBJECT OF EXPENSE</b>		<b>\$0</b>	<b>\$0</b>	<b>\$0</b>	<b>\$0</b>	<b>\$0</b>
<b>Method of Financing:</b>						
1	General Revenue Fund	\$0	\$0	\$0	\$0	\$0
<b>SUBTOTAL, MOF (GENERAL REVENUE FUNDS)</b>		<b>\$0</b>	<b>\$0</b>	<b>\$0</b>	<b>\$0</b>	<b>\$0</b>
<b>TOTAL, METHOD OF FINANCE (INCLUDING RIDERS)</b>					<b>\$0</b>	<b>\$0</b>
<b>TOTAL, METHOD OF FINANCE (EXCLUDING RIDERS)</b>		<b>\$0</b>	<b>\$0</b>	<b>\$0</b>	<b>\$0</b>	<b>\$0</b>
<b>FULL TIME EQUIVALENT POSITIONS:</b>		<b>0.0</b>	<b>0.0</b>	<b>0.0</b>	<b>0.0</b>	<b>0.0</b>
<b>STRATEGY DESCRIPTION AND JUSTIFICATION:</b>						

**3.A. Strategy Request**  
88th Regular Session, Agency Submission, Version 1  
Automated Budget and Evaluation System of Texas (ABEST)

**71F Texas State Technical College - Ft. Bend**

GOAL: 3 Provide Non-formula Support  
OBJECTIVE: 5 Exceptional Item Request  
STRATEGY: 1 Exceptional Item Request

Service Categories:

Service: 19 Income: A.2 Age: B.3

CODE	DESCRIPTION	Exp 2021	Est 2022	Bud 2023	BL 2024	BL 2025
------	-------------	----------	----------	----------	---------	---------

Texas industry and supply chain are constrained by the shortage in commercial driver's license (CDL) holders. This shortage spans across a broad range of industries in Texas. The American Trucking Association (ATA) reports that nearly 72% of all freight tonnage moved in the U.S. travels by commercial truck. In order to meet America's freight needs, the industry requires nearly three million heavy-duty Class 8 trucks and over three million truck drivers. ATA reports the current shortage of truck drivers nationwide is around 80,000 and will reach 160,000 by 2030 if current trends continue. According to the Texas Trucking Association (TXTA), the shortage of CDL drivers continues to negatively impact the supply chain, as 82 percent of Texas communities depend exclusively on trucks for needed products. TXTA also advises that 15 of every 1,000 jobs in Texas belong to truckers, and projects approximately 62,000 new job openings due to growth over the next 10 years. With its statewide scope and strategic placement across the Texas landscape, TSTC is positioned to address the CDL shortage in a meaningful way. To execute rapidly, TSTC requests an Exceptional Item of \$103 million to (1) establish or expand six CDL training and testing sites, (2) create licensing capacity to license approximately 2,400 drivers per year, and (3) establish a platform for an advanced transportation ecosystem around the state meeting both the immediate and future training needs of Texas.

**EXTERNAL/INTERNAL FACTORS IMPACTING STRATEGY:**

Consequences of not funding: Continued Driver shortage, prolonged supply chain disruption and negative impact to the Texas Economy.

**EXPLANATION OF BIENNIAL CHANGE (includes Rider amounts):**

<u>STRATEGY BIENNIAL TOTAL - ALL FUNDS</u>		<u>BIENNIAL CHANGE</u>	<u>EXPLANATION OF BIENNIAL CHANGE</u>	
<u>Base Spending (Est 2022 + Bud 2023)</u>	<u>Baseline Request (BL 2024 + BL 2025)</u>		<u>\$ Amount</u>	<u>Explanation(s) of Amount (must specify MOFs and FTEs)</u>
\$0	\$0	\$0	<b>\$0</b>	<b>Total of Explanation of Biennial Change</b>

**3.A. Strategy Request**  
88th Regular Session, Agency Submission, Version 1  
Automated Budget and Evaluation System of Texas (ABEST)

---

**SUMMARY TOTALS:**

<b>OBJECTS OF EXPENSE:</b>	<b>\$7,287,093</b>	<b>\$8,020,419</b>	<b>\$11,885,190</b>	<b>\$8,690,981</b>	<b>\$8,693,847</b>
<b>METHODS OF FINANCE (INCLUDING RIDERS):</b>				<b>\$8,690,981</b>	<b>\$8,693,847</b>
<b>METHODS OF FINANCE (EXCLUDING RIDERS):</b>	<b>\$7,287,093</b>	<b>\$8,020,419</b>	<b>\$11,885,190</b>	<b>\$8,690,981</b>	<b>\$8,693,847</b>
<b>FULL TIME EQUIVALENT POSITIONS:</b>	<b>76.6</b>	<b>78.2</b>	<b>78.2</b>	<b>78.2</b>	<b>78.2</b>

**4.A. Exceptional Item Request Schedule**  
88th Regular Session, Agency Submission, Version 1  
Automated Budget and Evaluation System of Texas (ABEST)

Agency code: **71F**                      Agency name: **Texas State Technical College - Ft. Bend**

CODE	DESCRIPTION	Excp 2024	Excp 2025
<b>Item Name:</b> Statewide CDL Program Expansion <b>Item Priority:</b> 1 <b>IT Component:</b> No <b>Anticipated Out-year Costs:</b> Yes <b>Involve Contracts &gt; \$50,000:</b> Yes <b>Includes Funding for the Following Strategy or Strategies:</b> 03-05-01      Exceptional Item Request			
1001	SALARIES AND WAGES	439,590	515,046
2009	OTHER OPERATING EXPENSE	1,425,371	1,731,036
5000	CAPITAL EXPENDITURES	8,433,935	1,105,000
<b>TOTAL, OBJECT OF EXPENSE</b>		<b>\$10,298,896</b>	<b>\$3,351,082</b>
<b>METHOD OF FINANCING:</b>			
1	General Revenue Fund	10,298,896	3,351,082
<b>TOTAL, METHOD OF FINANCING</b>		<b>\$10,298,896</b>	<b>\$3,351,082</b>
<b>FULL-TIME EQUIVALENT POSITIONS (FTE):</b>		6.00	7.00

**DESCRIPTION / JUSTIFICATION:**

Texas industry and supply chain are constrained by the shortage in commercial driver's license (CDL) holders. This shortage spans across a broad range of industries in Texas. The American Trucking Association (ATA) reports that nearly 72% of all freight tonnage moved in the U.S. travels by commercial truck. In order to meet America's freight needs, the industry requires nearly three million heavy-duty Class 8 trucks and over three million truck drivers. ATA reports the current shortage of truck drivers nationwide is around 80,000 and will reach 160,000 by 2030 if current trends continue. According to the Texas Trucking Association (TTA), the shortage of CDL drivers continues to negatively impact the supply chain, as 82 percent of Texas communities depend exclusively on trucks for needed products. TTA also advises that 15 of every 1,000 jobs in Texas belong to truckers, and projects approximately 62,000 new job openings due to growth over the next 10 years. With its statewide scope and strategic placement across the Texas landscape, TSTC is positioned to address the CDL shortage in a meaningful way. To execute rapidly, TSTC requests an Exceptional Item of \$103 million to (1) establish or expand six CDL training and testing sites, (2) create licensing capacity to license approximately 2,400 drivers per year, and (3) establish a platform for an advanced transportation ecosystem around the state meeting both the immediate and future training needs of Texas.

**EXTERNAL/INTERNAL FACTORS:**

Consequences of not funding: Continued Driver shortage, prolonged supply chain disruption and negative impact to the Texas Economy.

**PCLS TRACKING KEY:**



**4.A. Exceptional Item Request Schedule**  
88th Regular Session, Agency Submission, Version 1  
Automated Budget and Evaluation System of Texas (ABEST)

---

Agency code:      **71F**                      Agency name:   **Texas State Technical College - Ft. Bend**

---

<b>CODE</b>	<b>DESCRIPTION</b>	<b>Excp 2024</b>	<b>Excp 2025</b>
-------------	--------------------	------------------	------------------

---

**DESCRIPTION OF ANTICIPATED OUT-YEAR COSTS :**

Continuing Operating Costs

**ESTIMATED ANTICIPATED OUT-YEAR COSTS FOR ITEM:**

	<b>2026</b>	<b>2027</b>	<b>2028</b>
	\$2,321,538	\$2,321,538	\$2,321,538

**APPROXIMATE PERCENTAGE OF EXCEPTIONAL ITEM :**              0.00%

**CONTRACT DESCRIPTION :**

None

4.B. Exceptional Items Strategy Allocation Schedule  
88th Regular Session, Agency Submission, Version 1  
Automated Budget and Evaluation System of Texas (ABEST)

Agency code: 71F		Agency name: Texas State Technical College - Ft. Bend	
Code	Description	Excp 2024	Excp 2025
Item Name: Statewide CDL Program Expansion			
Allocation to Strategy: 3-5-1 Exceptional Item Request			
OBJECTS OF EXPENSE:			
1001	SALARIES AND WAGES	439,590	515,046
2009	OTHER OPERATING EXPENSE	1,425,371	1,731,036
5000	CAPITAL EXPENDITURES	8,433,935	1,105,000
TOTAL, OBJECT OF EXPENSE		\$10,298,896	\$3,351,082
METHOD OF FINANCING:			
1	General Revenue Fund	10,298,896	3,351,082
TOTAL, METHOD OF FINANCING		\$10,298,896	\$3,351,082
FULL-TIME EQUIVALENT POSITIONS (FTE):		6.0	7.0

**4.C. Exceptional Items Strategy Request**  
88th Regular Session, Agency Submission, Version 1  
Automated Budget and Evaluation System of Texas (ABEST)

Agency Code:	<b>71F</b>	Agency name:	<b>Texas State Technical College - Ft. Bend</b>	
GOAL:	3 Provide Non-formula Support			
OBJECTIVE:	5 Exceptional Item Request	Service Categories:		
STRATEGY:	1 Exceptional Item Request	Service: 19	Income: A.2	Age: B.3

<b>CODE DESCRIPTION</b>	<b>Excp 2024</b>	<b>Excp 2025</b>
<b>OBJECTS OF EXPENSE:</b>		
1001 SALARIES AND WAGES	439,590	515,046
2009 OTHER OPERATING EXPENSE	1,425,371	1,731,036
5000 CAPITAL EXPENDITURES	8,433,935	1,105,000
<b>Total, Objects of Expense</b>	<b>\$10,298,896</b>	<b>\$3,351,082</b>
<b>METHOD OF FINANCING:</b>		
1 General Revenue Fund	10,298,896	3,351,082
<b>Total, Method of Finance</b>	<b>\$10,298,896</b>	<b>\$3,351,082</b>
<b>FULL-TIME EQUIVALENT POSITIONS (FTE):</b>	6.0	7.0
<b>EXCEPTIONAL ITEM(S) INCLUDED IN STRATEGY:</b>		
Statewide CDL Program Expansion		

## General Revenue (GR) & General Revenue Dedicated (GR-D) Baseline

88th Regular Session, Agency Submission, Version 1  
Automated Budget and Evaluation System of Texas (ABEST)

Agency code: 71F

Agency name: Texas State Technical College - Ft. Bend

GR Baseline Request Limit = \$8,056,998

GR-D Baseline Request Limit = \$0

Strategy/Strategy Option/Rider								Biennial	Biennial	Page #
2024 Funds				2025 Funds				Cumulative GR	Cumulative Ded	
FTEs	Total	GR	Ded	FTEs	Total	GR	Ded			
<b>0.0</b>				<b>0.0</b>				*****GR-D Baseline Request Limit=\$0*****		
Strategy: 1 - 1 - 3	<b>Staff Group Insurance Premiums</b>									
0.0	81,461	0	81,461	0.0	84,173	0	84,173	0	165,634	_____
Strategy: 1 - 1 - 6	<b>Texas Public Education Grants</b>									
0.0	54,341	0	54,341	0.0	55,981	0	55,981	0	275,956	_____
Strategy: 2 - 1 - 1	<b>Educational and General Space Support</b>									
2.9	0	0	0	2.9	0	0	0	0	275,956	_____
<b>2.9</b>				<b>2.9</b>				*****GR Baseline Request Limit=\$8,056,998*****		
Strategy: 2 - 1 - 2	<b>Capital Construction Assistance Projects Revenue Bonds</b>									
0.0	4,526,680	4,526,680	0	0.0	4,525,194	4,525,194	0	9,051,874	275,956	_____
Strategy: 2 - 1 - 5	<b>Small Institution Supplement</b>									
11.3	0	0	0	11.3	0	0	0	9,051,874	275,956	_____
Strategy: 3 - 1 - 1	<b>Startup Funding</b>									
44.2	3,280,708	3,280,708	0	44.2	3,280,708	3,280,708	0	15,613,290	275,956	_____
Strategy: 3 - 4 - 1	<b>Institutional Enhancement</b>									
19.8	747,791	747,791	0	19.8	747,791	747,791	0	17,108,872	275,956	_____
Excp Item: 1	<b>Statewide CDL Program Expansion</b>									
6.0	10,298,896	10,298,896	0	7.0	3,351,082	3,351,082	0	30,758,850	275,956	_____
<b>Strategy Detail for Excp Item: 1</b>										
Strategy: 3 - 5 - 1	<b>Exceptional Item Request</b>									
6.0	10,298,896	10,298,896	0	7.0	3,351,082	3,351,082	0			
<b>84.2</b>	<b>\$18,989,877</b>	<b>\$18,854,075</b>	<b>\$135,802</b>	<b>85.2</b>	<b>\$12,044,929</b>	<b>\$11,904,775</b>	<b>140,154</b>			

**6.A. Historically Underutilized Business Supporting Schedule**  
88th Regular Session, Agency Submission, Version 1  
Automated Budget and Evaluation System of Texas (ABEST)

Agency Code: **71F**      Agency: **Texas State Technical College - Ft. Bend**

COMPARISON TO STATEWIDE HUB PROCUREMENT GOALS

**A. Fiscal Year - HUB Expenditure Information**

Statewide HUB Goals	Procurement Category	% Goal	HUB Expenditures FY 2020			Total Expenditures FY 2020		HUB Expenditures FY 2021			Total Expenditures FY 2021	
			% Actual	Diff	Actual \$		% Goal	% Actual	Diff	Actual \$		
11.2%	Heavy Construction	11.2 %	2.3%	-8.9%	\$16,215	\$691,533	11.2 %	2.1%	-9.1%	\$3,579	\$173,836	
21.1%	Building Construction	21.1 %	0.0%	-21.1%	\$0	\$5,354,627	21.1 %	3.7%	-17.4%	\$262,714	\$7,195,694	
32.9%	Special Trade	32.9 %	14.9%	-18.0%	\$1,061,706	\$7,113,163	32.9 %	9.2%	-23.7%	\$358,050	\$3,886,206	
23.7%	Professional Services	23.7 %	0.4%	-23.3%	\$12,760	\$3,187,408	23.7 %	0.0%	-23.7%	\$0	\$181,781	
26.0%	Other Services	26.0 %	20.0%	-6.0%	\$2,137,903	\$10,672,547	26.0 %	28.2%	2.2%	\$5,205,557	\$18,437,891	
21.1%	Commodities	21.1 %	4.3%	-16.8%	\$743,463	\$17,388,800	21.1 %	5.6%	-15.5%	\$1,140,419	\$20,504,554	
	<b>Total Expenditures</b>		<b>8.9%</b>		<b>\$3,972,047</b>	<b>\$44,408,078</b>		<b>13.8%</b>		<b>\$6,970,319</b>	<b>\$50,379,962</b>	

**B. Assessment of Attainment of HUB Procurement Goals**

**Attainment:**

TSTC exceeded its HUB goal for Other Services in FY 2021 and increased HUB expenditures from FY 2020 to FY 2021.

**Applicability:**

TSTC had expenditures in all categories in both fiscal years.

**Factors Affecting Attainment:**

TSTC makes purchases throughout the fiscal year for various equipment, supplies, and/or services. HUB vendors sometimes do not respond to solicitations, including requests for proposal, invitations to bid, and requests for qualifications.

Professional services often require specialized knowledge, skills, and experience. Due to these requirements, there are very few, if any, HUB vendors in these fields to complete the projects.

**C. Good-Faith Efforts to Increase HUB Participation**

**Outreach Efforts and Mentor-Protégé Programs:**

TSTC participated in five HUB forums sponsored by businesses and governmental entities. TSTC did not have an active mentor-protégé partnership in the 2020-21 biennium.

**HUB Program Staffing:**

**6.A. Historically Underutilized Business Supporting Schedule**  
88th Regular Session, Agency Submission, Version 1  
Automated Budget and Evaluation System of Texas (ABEST)

---

Agency Code: **71F**      Agency: **Texas State Technical College - Ft. Bend**

In FY 2021, TSTC established a Supplier Diversity Committee and hired one Supplier Diversity Specialist to oversee the Supplier Diversity program. The Supplier Diversity Specialist was responsible for increasing HUB participation by:

- Actively seeking certified HUB suppliers through HUB events and outreach initiatives.
- Ensuring the inclusion of HUB suppliers as a part of our strategic sourcing and procurement process.
- Communicating the value of supplier diversity both internally and externally to all stakeholders.

**Current and Future Good-Faith Efforts:**

The agency made the following good faith efforts to comply with statewide HUB procurement goals per 34 TAC Section 20.13(c):

- Increase awareness of the supplier diversity program through internal and external education initiatives
- Participate in HUB events to implement best practices and enhance HUB outreach
- Educate and motivate potential HUB suppliers to apply for HUB certification and participation
- Gather and respond to HUB supplier feedback concerning challenges to solicitation participation
- Increase participation in the Mentor-Protégé program

**6.H Estimated Funds Outside the Institution's Bill Pattern**  
88th Regular Session, Agency Submission, Version 1  
Automated Budget and Administration System of Texas (ABEST)

**TSTC Fort Bend (71F)**

**Estimated Funds Outside the Institution's Bill Pattern  
2022-23 and 2024-25 Biennia**

	2022-23 Biennium				2024-25 Biennium			
	<u>FY 2022 Revenue</u>	<u>FY 2023 Revenue</u>	<u>Biennium Total</u>	<u>Percent of Total</u>	<u>FY 2024 Revenue</u>	<u>FY 2025 Revenue</u>	<u>Biennium Total</u>	<u>Percent of Total</u>
<b>APPROPRIATED SOURCES INSIDE THE BILL PATTERN</b>								
State Appropriations (excluding HEGI & State Paid Fringes)	\$ 8,263,566	\$ 7,531,531	\$ 15,795,097		\$ 7,531,531	\$ 7,531,531	\$ 15,063,062	
Tuition and Fees (net of Discounts and Allowances)	318,544	265,364	583,908		270,352	275,343	545,695	
Endowment and Interest Income	-	-	-		-	-	-	
Sales and Services of Educational Activities (net)	-	-	-		-	-	-	
Sales and Services of Hospitals (net)	-	-	-		-	-	-	
Other Income	-	-	-		-	-	-	
Total	<u>8,582,110</u>	<u>7,796,895</u>	<u>16,379,005</u>	<u>54.0%</u>	<u>7,801,883</u>	<u>7,806,874</u>	<u>15,608,757</u>	<u>57.3%</u>
<b>APPROPRIATED SOURCES OUTSIDE THE BILL PATTERN</b>								
State Appropriations (HEGI & State Paid Fringes)	\$ 1,314,563	\$ 1,677,071	\$ 2,991,634		\$ 1,717,439	\$ 1,750,325	\$ 3,467,764	
Higher Education Assistance Funds	1,501,800	592,076	2,093,876		592,076	591,695	1,183,771	
Available University Fund	-	-	-		-	-	-	
State Grants and Contracts	-	-	-		-	-	-	
Total	<u>2,816,363</u>	<u>2,269,147</u>	<u>5,085,510</u>	<u>16.8%</u>	<u>2,309,515</u>	<u>2,342,020</u>	<u>4,651,535</u>	<u>17.1%</u>
<b>NON-APPROPRIATED SOURCES</b>								
Tuition and Fees (net of Discounts and Allowances)	2,501,618	1,352,881	3,854,499		1,372,703	1,392,083	2,764,786	
Federal Grants and Contracts	2,170,000	1,500,000	3,670,000		1,500,000	1,500,000	3,000,000	
State Grants and Contracts	250,000	100,000	350,000		100,000	100,000	200,000	
Local Government Grants and Contracts	155,000	155,000	310,000		155,000	155,000	310,000	
Private Gifts and Grants	-	-	-		-	-	-	
Endowment and Interest Income	-	-	-		-	-	-	
Sales and Services of Educational Activities (net)	220,000	250,000	470,000		250,000	250,000	500,000	
Sales and Services of Hospitals (net)	-	-	-		-	-	-	
Professional Fees (net)	-	-	-		-	-	-	
Auxiliary Enterprises (net)	110,719	100,000	210,719		100,000	100,000	200,000	
Other Income	-	-	-		-	-	-	
Total	<u>5,407,337</u>	<u>3,457,881</u>	<u>8,865,218</u>	<u>29.2%</u>	<u>3,477,703</u>	<u>3,497,083</u>	<u>6,974,786</u>	<u>25.6%</u>
<b>TOTAL SOURCES</b>	<u><u>\$ 16,805,810</u></u>	<u><u>\$ 13,523,923</u></u>	<u><u>\$ 30,329,733</u></u>	<u><u>100.0%</u></u>	<u><u>\$ 13,589,101</u></u>	<u><u>\$ 13,645,977</u></u>	<u><u>\$ 27,235,078</u></u>	<u><u>100.0%</u></u>

**Schedule 1A: Other Educational and General Income**  
88th Regular Session, Agency Submission, Version 1  
Automated Budget and Evaluation System of Texas (ABEST)

<b>71F Texas State Technical College - Ft. Bend</b>					
	<b>Act 2021</b>	<b>Act 2022</b>	<b>Bud 2023</b>	<b>Est 2024</b>	<b>Est 2025</b>
<b>Gross Tuition</b>					
Gross Resident Tuition	373,773	419,607	372,819	384,003	395,523
Gross Non-Resident Tuition	28,474	67,110	41,214	42,451	43,724
<b>Gross Tuition</b>	<b>402,247</b>	<b>486,717</b>	<b>414,033</b>	<b>426,454</b>	<b>439,247</b>
Less: Resident Waivers and Exemptions (excludes Hazlewood)	(3,482)	(2,710)	(2,595)	(2,673)	(2,753)
Less: Non-Resident Waivers and Exemptions	(26,468)	(46,105)	(16,796)	(17,300)	(17,819)
Less: Hazlewood Exemptions	(12,036)	(10,018)	(9,883)	(10,180)	(10,485)
Less: Board Authorized Tuition Increases (TX. Educ. Code Ann. Sec. 54.008)	0	0	0	0	0
Less: Tuition increases charged to doctoral students with hours in excess of 100 (TX. Educ. Code Ann. Sec. 54.012)	0	0	0	0	0
Less: Tuition increases charged to undergraduate students with excessive hours above degree requirements. (TX. Educ. Code Ann. Sec. 61.0595)	0	0	0	0	0
Less: Tuition rebates for certain undergraduates (TX. Educ. Code Ann. Sec. 54.0065)	0	0	0	0	0
Plus: Tuition waived for Students 55 Years or Older (TX. Educ. Code Ann. Sec. 54.013)	0	0	0	0	0
Less: Tuition for repeated or excessive hours (TX. Educ. Code Ann. Sec. 54.014)	0	0	0	0	0
Plus: Tuition waived for Texas Grant Recipients (TX. Educ. Code Ann. Sec. 56.307)	0	0	0	0	0
<b>Subtotal</b>	<b>360,261</b>	<b>427,884</b>	<b>384,759</b>	<b>396,301</b>	<b>408,190</b>
Less: Transfer of funds for Texas Public Education Grants Program (Tex. Educ. Code Ann. Sec. 56c) and for Emergency Loans (Tex. Educ. Code Ann. Sec. 56d)	(50,303)	(56,146)	(52,768)	(54,351)	(55,981)
Less: Transfer of Funds (2%) for Physician/Dental Loans (Medical Schools)	0	0	0	0	0
Less: Statutory Tuition (Tx. Educ. Code Ann. Sec. 54.051) Set Aside for Doctoral Incentive Loan Repayment Program (Tx. Educ. Code Ann. Sec. 56.095)	0	0	0	0	0
Less: Other Authorized Deduction					
<b>Net Tuition</b>	<b>309,958</b>	<b>371,738</b>	<b>331,991</b>	<b>341,950</b>	<b>352,209</b>
Student Teaching Fees	0	0	0	0	0



**Schedule 1A: Other Educational and General Income**  
88th Regular Session, Agency Submission, Version 1  
Automated Budget and Evaluation System of Texas (ABEST)

<b>71F Texas State Technical College - Ft. Bend</b>					
	<b>Act 2021</b>	<b>Act 2022</b>	<b>Bud 2023</b>	<b>Est 2024</b>	<b>Est 2025</b>
Special Course Fees	0	0	0	0	0
Laboratory Fees	0	0	0	0	0
<b>Subtotal, Tuition and Fees (Formula Amounts for Health-Related Institutions)</b>	<b>309,958</b>	<b>371,738</b>	<b>331,991</b>	<b>341,950</b>	<b>352,209</b>
<b>OTHER INCOME</b>					
<b>Interest on General Funds:</b>					
Local Funds in State Treasury	0	0	0	0	0
Funds in Local Depositories, e.g., local amounts	0	0	0	0	0
Other Income (Itemize)					
<b>Subtotal, Other Income</b>	<b>0</b>	<b>0</b>	<b>0</b>	<b>0</b>	<b>0</b>
<b>Subtotal, Other Educational and General Income</b>	<b>309,958</b>	<b>371,738</b>	<b>331,991</b>	<b>341,950</b>	<b>352,209</b>
Less: O.A.S.I. Applicable to Educational and General Local Funds Payrolls	(13,046)	(20,350)	(19,493)	(20,078)	(20,680)
Less: Teachers Retirement System and ORP Proportionality for Educational and General Funds	(12,205)	(18,722)	(20,969)	(21,598)	(22,246)
Less: Staff Group Insurance Premiums	(67,321)	(76,559)	(78,927)	(81,461)	(84,173)
<b>Total, Other Educational and General Income (Formula Amounts for General Academic Institutions)</b>	<b>217,386</b>	<b>256,107</b>	<b>212,602</b>	<b>218,813</b>	<b>225,110</b>
<b>Reconciliation to Summary of Request for FY 2019-2021:</b>					
Plus: Transfer of Funds for Texas Public Education Grants Program and Physician Loans	50,303	56,146	52,768	54,351	55,981
Plus: Transfer of Funds 2% for Physician/Dental Loans (Medical Schools)	0	0	0	0	0
Plus: Transfer of Funds for Cancellation of Student Loans of Physicians	0	0	0	0	0
Plus: Organized Activities	0	0	0	0	0
Plus: Staff Group Insurance Premiums	67,321	76,559	78,927	81,461	84,173
Plus: Board-authorized Tuition Income	0	0	0	0	0
Plus: Tuition Increases Charged to Doctoral Students with Hours in Excess of 100	0	0	0	0	0
Plus: Tuition Increases Charged to Undergraduate Students with Excessive Hours above Degree Requirements (TX. Educ. Code Ann. Sec. 61.0595)	0	0	0	0	0

**Schedule 1A: Other Educational and General Income**

88th Regular Session, Agency Submission, Version 1  
Automated Budget and Evaluation System of Texas (ABEST)

<b>71F Texas State Technical College - Ft. Bend</b>					
	<b>Act 2021</b>	<b>Act 2022</b>	<b>Bud 2023</b>	<b>Est 2024</b>	<b>Est 2025</b>
Plus: Tuition rebates for certain undergraduates (TX Educ.Code Ann. Sec. 54.0065)	0	0	0	0	0
Plus: Tuition for repeated or excessive hours (TX. Educ. Code Ann. Sec. 54.014)	0	0	0	0	0
Less: Tuition Waived for Students 55 Years or Older	0	0	0	0	0
Less: Tuition Waived for Texas Grant Recipients	0	0	0	0	0
<b>Total, Other Educational and General Income Reported on Summary of Request</b>	<b>335,010</b>	<b>388,812</b>	<b>344,297</b>	<b>354,625</b>	<b>365,264</b>

**Schedule 2: Selected Educational, General and Other Funds**

88th Regular Session, Agency Submission, Version 1  
Automated Budget and Evaluation System of Texas (ABEST)

<b>71F Texas State Technical College - Ft. Bend</b>					
	<b>Act 2021</b>	<b>Act 2022</b>	<b>Bud 2023</b>	<b>Est 2024</b>	<b>Est 2025</b>
General Revenue Transfers					
Transfer from Coordinating Board for Texas College Work Study Program (2021, 2022, 2023)	2,726	1,976	1,000	1,000	1,000
Transfer from Coordinating Board for Professional Nursing Shortage Reduction Program	0	0	0	0	0
Transfer of GR Group Insurance Premium from Comptroller (UT and TAMU Components only)	0	0	0	0	0
Less: Transfer to Other Institutions	1,268,828	1,364,800	1,300,000	1,300,000	1,300,000
Less: Transfer to Department of Health, Disproportionate Share - State-Owned Hospitals (2021, 2022, 2023)	0	0	0	0	0
Other (Itemize)					
Other: Fifth Year Accounting Scholarship	0	0	0	0	0
Texas Grants	0	0	0	0	0
B-on-Time Program	0	0	0	0	0
Texas Research Incentive Program	0	0	0	0	0
Less: Transfer to System Administration	0	0	4,061,162	0	0
GME Expansion	0	0	0	0	0
<b>Subtotal, General Revenue Transfers</b>	<b>1,271,554</b>	<b>1,366,776</b>	<b>5,362,162</b>	<b>1,301,000</b>	<b>1,301,000</b>
General Revenue HEF	866,625	1,501,800	592,076	592,076	592,076
Transfer from Available University Funds (UT, A&M and Prairie View A&M Only)	0	0	0	0	0
Other Additions (Itemize)					
Increase Capital Projects - Educational and General Funds	0	0	0	0	0
Transfer from Department of Health, Disproportionate Share - State-owned Hospitals (2021, 2022, 2023)	0	0	0	0	0
Transfers from Other Funds, e.g., Designated funds transferred for educational and general activities (Itemize)	0	0	0	0	0
Other (Itemize)					
<b>Gross Designated Tuition (Sec. 54.0513)</b>	<b>2,736,142</b>	<b>3,490,378</b>	<b>2,862,110</b>	<b>2,947,973</b>	<b>3,036,412</b>
<b>Indirect Cost Recovery (Sec. 145.001(d))</b>	<b>0</b>	<b>0</b>	<b>0</b>	<b>0</b>	<b>0</b>
<b>Correctional Managed Care Contracts</b>	<b>0</b>	<b>0</b>	<b>0</b>	<b>0</b>	<b>0</b>

**Schedule 3A: Staff Group Insurance Data Elements (ERS)**  
88th Regular Session, Agency Submission, Version 1  
Automated Budget and Evaluation System of Texas (ABEST)

**71F Texas State Technical College - Ft. Bend**

	<b>E&amp;G Enrollment</b>	<b>GR Enrollment</b>	<b>GR-D/OEGI Enrollment</b>	<b>Total E&amp;G (Check)</b>	<b>Local Non-E&amp;G</b>
<b>GR &amp; GR-D Percentages</b>					
GR %	93.28%				
GR-D/Other %	6.72%				
<b>Total Percentage</b>	<b>100.00%</b>				
<b>FULL TIME ACTIVES</b>					
1a Employee Only	36	34	2	36	5
2a Employee and Children	10	9	1	10	1
3a Employee and Spouse	8	7	1	8	0
4a Employee and Family	13	12	1	13	0
5a Eligible, Opt Out	5	5	0	5	0
6a Eligible, Not Enrolled	5	5	0	5	0
<b>Total for This Section</b>	<b>77</b>	<b>72</b>	<b>5</b>	<b>77</b>	<b>6</b>
<b>PART TIME ACTIVES</b>					
1b Employee Only	0	0	0	0	0
2b Employee and Children	0	0	0	0	0
3b Employee and Spouse	0	0	0	0	0
4b Employee and Family	0	0	0	0	0
5b Eligible, Opt Out	0	0	0	0	0
6b Eligible, Not Enrolled	0	0	0	0	0
<b>Total for This Section</b>	<b>0</b>	<b>0</b>	<b>0</b>	<b>0</b>	<b>0</b>
<b>Total Active Enrollment</b>	<b>77</b>	<b>72</b>	<b>5</b>	<b>77</b>	<b>6</b>

**Schedule 3A: Staff Group Insurance Data Elements (ERS)**  
88th Regular Session, Agency Submission, Version 1  
Automated Budget and Evaluation System of Texas (ABEST)

**71F Texas State Technical College - Ft. Bend**

	<b>E&amp;G Enrollment</b>	<b>GR Enrollment</b>	<b>GR-D/OEGI Enrollment</b>	<b>Total E&amp;G (Check)</b>	<b>Local Non-E&amp;G</b>
<b>FULL TIME RETIREES by ERS</b>					
1c Employee Only	0	0	0	0	0
2c Employee and Children	0	0	0	0	0
3c Employee and Spouse	0	0	0	0	0
4c Employee and Family	0	0	0	0	0
5c Eligible, Opt Out	0	0	0	0	0
6c Eligible, Not Enrolled	0	0	0	0	0
<b>Total for This Section</b>	<b>0</b>	<b>0</b>	<b>0</b>	<b>0</b>	<b>0</b>
<b>PART TIME RETIREES by ERS</b>					
1d Employee Only	0	0	0	0	0
2d Employee and Children	0	0	0	0	0
3d Employee and Spouse	0	0	0	0	0
4d Employee and Family	0	0	0	0	0
5d Eligible, Opt Out	0	0	0	0	0
6d Eligible, Not Enrolled	0	0	0	0	0
<b>Total for This Section</b>	<b>0</b>	<b>0</b>	<b>0</b>	<b>0</b>	<b>0</b>
<b>Total Retirees Enrollment</b>	<b>0</b>	<b>0</b>	<b>0</b>	<b>0</b>	<b>0</b>
<b>TOTAL FULL TIME ENROLLMENT</b>					
1e Employee Only	36	34	2	36	5
2e Employee and Children	10	9	1	10	1
3e Employee and Spouse	8	7	1	8	0
4e Employee and Family	13	12	1	13	0
5e Eligible, Opt Out	5	5	0	5	0
6e Eligible, Not Enrolled	5	5	0	5	0
<b>Total for This Section</b>	<b>77</b>	<b>72</b>	<b>5</b>	<b>77</b>	<b>6</b>

**Schedule 3A: Staff Group Insurance Data Elements (ERS)**  
88th Regular Session, Agency Submission, Version 1  
Automated Budget and Evaluation System of Texas (ABEST)

**71F Texas State Technical College - Ft. Bend**

	<b>E&amp;G Enrollment</b>	<b>GR Enrollment</b>	<b>GR-D/OEGI Enrollment</b>	<b>Total E&amp;G (Check)</b>	<b>Local Non-E&amp;G</b>
<b>TOTAL ENROLLMENT</b>					
1f Employee Only	36	34	2	36	5
2f Employee and Children	10	9	1	10	1
3f Employee and Spouse	8	7	1	8	0
4f Employee and Family	13	12	1	13	0
5f Eligible, Opt Out	5	5	0	5	0
6f Eligible, Not Enrolled	5	5	0	5	0
<b>Total for This Section</b>	<b>77</b>	<b>72</b>	<b>5</b>	<b>77</b>	<b>6</b>

**Schedule 4: Computation of OASI**  
88th Regular Session, Agency Submission, Version 1  
Automated Budget and Evaluation System of Texas (ABEST)

**Agency 71F Texas State Technical College - Ft. Bend**

Proportionality Percentage Based on Comptroller Accounting Policy Statement #011, Exhibit 2	2021		2022		2023		2024		2025	
	<u>% to Total</u>	<u>Allocation of OASI</u>	<u>% to Total</u>	<u>Allocation of OASI</u>	<u>% to Total</u>	<u>Allocation of OASI</u>	<u>% to Total</u>	<u>Allocation of OASI</u>	<u>% to Total</u>	<u>Allocation of OASI</u>
General Revenue (% to Total)	96.1898	\$329,344	94.6821	\$362,313	96.3364	\$512,575	96.3364	\$527,952	96.3364	\$543,791
Other Educational and General Funds (% to Total)	3.8102	\$13,046	5.3179	\$20,350	3.6636	\$19,493	3.6636	\$20,078	3.6636	\$20,680
Health-Related Institutions Patient Income (% to Total)	0.0000	\$0	0.0000	\$0	0.0000	\$0	0.0000	\$0	0.0000	\$0
<b>Grand Total, OASI (100%)</b>	100.0000	<b>\$342,390</b>	100.0000	<b>\$382,663</b>	100.0000	<b>\$532,068</b>	100.0000	<b>\$548,030</b>	100.0000	<b>\$564,471</b>

**Schedule 5: Calculation of Retirement Proportionality and ORP Differential**

88th Regular Session, Agency Submission, Version 1

Automated Budget and Evaluation System of Texas (ABEST)

**71F Texas State Technical College - Ft. Bend**

Description	Act 2021	Act 2022	Bud 2023	Est 2024	Est 2025
<b>Proportionality Amounts</b>					
Gross Educational and General Payroll - Subject To TRS Retirement	4,210,015	4,089,920	6,367,788	6,173,008	6,358,198
Employer Contribution to TRS Retirement Programs	286,281	306,744	509,423	524,706	540,447
Gross Educational and General Payroll - Subject To ORP Retirement	515,924	686,530	953,409	982,011	1,011,472
Employer Contribution to ORP Retirement Programs	34,051	45,311	62,925	64,813	66,757
<b>Proportionality Percentage</b>					
General Revenue	96.1898 %	94.6821 %	96.3364 %	96.3364 %	96.3364 %
Other Educational and General Income	3.8102 %	5.3179 %	3.6636 %	3.6636 %	3.6636 %
Health-related Institutions Patient Income	0.0000 %	0.0000 %	0.0000 %	0.0000 %	0.0000 %
<b>Proportional Contribution</b>					
Other Educational and General Proportional Contribution (Other E&G percentage x Total Employer Contribution to Retirement Programs)	12,205	18,722	20,969	21,598	22,246
HRI Patient Income Proportional Contribution (HRI Patient Income percentage x Total Employer Contribution To Retirement Programs)	0	0	0	0	0
<b>Differential</b>					
Differential Percentage	1.9000 %	1.9000 %	1.9000 %	1.9000 %	1.9000 %
Gross Payroll Subject to Differential - Optional Retirement Program	83,579	87,789	87,789	87,789	87,789
<b>Total Differential</b>	1,588	1,668	1,668	1,668	1,668



**Schedule 6: Constitutional Capital Funding**  
88th Regular Session, Agency Submission, Version 1  
Automated Budget and Evaluation System of Texas (ABEST)

<b>71F Texas State Technical College - Ft. Bend</b>					
<b>Activity</b>	<b>Act 2021</b>	<b>Act 2022</b>	<b>Bud 2023</b>	<b>Est 2024</b>	<b>Est 2025</b>
A. PUF Bond Proceeds Allocation	0	0	0	0	0
Project Allocation					
Library Acquisitions	0	0	0	0	0
Construction, Repairs and Renovations	0	0	0	0	0
Furnishings & Equipment	0	0	0	0	0
Computer Equipment & Infrastructure	0	0	0	0	0
Reserve for Future Consideration	0	0	0	0	0
Other (Itemize)					
B. HEF General Revenue Allocation	1,278,201	2,763,027	3,272,453	3,272,453	3,272,489
Project Allocation					
Library Acquisitions	0	0	0	0	0
Construction, Repairs and Renovations	8,050	82,650	0	0	0
Furnishings & Equipment	8,925	0	0	0	0
Computer Equipment & Infrastructure	0	0	0	0	0
Reserve for Future Consideration	1,261,226	2,680,377	2,680,377	2,680,413	2,680,794
HEF for Debt Service	0	0	592,076	592,040	591,695
Other (Itemize)					

**Schedule 7: Personnel**  
88th Regular Session, Agency Submission, Version 1  
Automated Budget and Evaluation System of Texas (ABEST)

Agency code: **71F**      Agency name: **TSTC - Ft. Bend**

	Actual 2021	Actual 2022	Budgeted 2023	Estimated 2024	Estimated 2025
<b>Part A.</b>					
<b>FTE Postions</b>					
<b>Directly Appropriated Funds (Bill Pattern)</b>					
Educational and General Funds Faculty Employees	32.3	32.3	32.3	32.3	32.3
Educational and General Funds Non-Faculty Employees	44.3	45.9	45.9	45.9	45.9
<b>Subtotal, Directly Appropriated Funds</b>	<b>76.6</b>	<b>78.2</b>	<b>78.2</b>	<b>78.2</b>	<b>78.2</b>
Non Appropriated Funds Employees	3.3	3.6	3.6	3.6	3.6
<b>Subtotal, Other Funds &amp; Non-Appropriated</b>	<b>3.3</b>	<b>3.6</b>	<b>3.6</b>	<b>3.6</b>	<b>3.6</b>
<b>GRAND TOTAL</b>	<b>79.9</b>	<b>81.8</b>	<b>81.8</b>	<b>81.8</b>	<b>81.8</b>

**Schedule 8C: Capital Construction Assistance Projects Revenue Bonds Request by Project**  
88th Regular Session, Agency Submission, Version 1

Agency Code: **71F**

Agency Name: **Texas State Technical College - Fort Bend**

Project Name	Authorization Year	Estimated Final Payment Date	Requested Amount 2024	Requested Amount 2025
Series 2016 - Construct Building #2 at Fort Bend Campus	2016	10/15/2035	\$ 973,344.00	\$ 974,094.00
Series 2022 CCAP Bond - Fort Bend County Campus Expansion	2022	8/31/2043	\$ 3,553,336.00	\$ 3,551,100.00
			<u>\$ 4,526,680.00</u>	<u>\$ 4,525,194.00</u>

**Schedule 9: Non-Formula Support**  
88th Regular Session, Agency Submission, Version 1  
Automated Budget and Evaluation System of Texas (ABEST)

---

**71F Texas State Technical College - Ft. Bend**

---

**1 - Fort Bend Start Up Funding**

<b>(1) Year Non-Formula Support Item First Funded:</b>	2016
Year Non-Formula Support Item Established:	2016
Original Appropriation:	\$4,500,000

**(2) Mission:**

TSTC's funding model for Instruction and Administration, the "returned value" (RTV) funding model, only funds results; consequently, it does not provide funding for start-up operations like other cost-reimbursement (e.g., contact-hour based) models. RTV funding returns a portion of the economic value to the state generated from wages earned (over five years) by former students. Consequently, there is an 8-10 year inherent lag between the campus start-up, teaching event, the students' 5-year earnings contribution, the funding formula measurement, and the allocation through appropriations funding. For start-up locations, significant costs accumulate during this time.

Basic start-up costs include, but are not limited to, operations personnel, debt service on financed equipment (TSTC's programs require costly, industrial equipment), and consumables (many programs have significant consumable cost, such as welding rods), and advertising costs. Start-up administrative costs are mitigated by TSTC's centralized administration structure.

As student earnings begin to reach the end of the 5-year measurement period, the funding formula will recognize these results and the need for transition funding will decline.

**(3) (a) Major Accomplishments to Date:**

Enrollment at Fort Bend continues to exceed expectations and some programs have reached capacity. Electrical Lineworker technology was recently added as a new program at Fort Bend, and expansion of welding and diesel labs is currently in progress.

Unprecedented levels of community support, with long term commitments of over \$40,000,000 in donations over the next 10 years.

**(3) (b) Major Accomplishments Expected During the Next 2 Years:**

TSTC in Fort Bend expects to grow beyond current instructional and space capacity.

Develop annual fundraising component to raise outside instructional aid and capital equipment donations.

Develop industry relations capacities to serve workforce and contract training needs.

Grow dual credit capacity with surrounding ISDs with focus on technical pathways.

**Schedule 9: Non-Formula Support**  
88th Regular Session, Agency Submission, Version 1  
Automated Budget and Evaluation System of Texas (ABEST)

---

**71F Texas State Technical College - Ft. Bend**

---

**(4) Funding Source Prior to Receiving Non-Formula Support Funding:**

Special Item - Fort Bend County Strategy, located in LAR of TSTC System Administration

**(5) Formula Funding:**

None

**(6) Category:**

Start-Up

**(7) Transitional Funding:**

Y

**(8) Non-General Revenue Sources of Funding:**

Community donations, GR-Dedicated Tuition & Fees and Designated Tuition.

**(9) Impact of Not Funding:**

This strategy funds core operations (teaching and learning) as a substitute for the Instruction and Administration formula funding. Elimination of funding would suspend TSTC's ability to operate programs. Following accreditor imposed teach-out obligations, the College would need to close programs, which would reduce the capacity to remedy Texas' technical skills shortage in one of the fastest growing counties in Texas.

**(10) Non-Formula Support Needed on Permanent Basis/Discontinuu**

This support will be necessary to maintain operations until the TSTC Returned-Value formula for the TSTC Fort Bend campus begins to phase in.

**(11) Non-Formula Support Associated with Time Frame:**

It is estimated that the need for this support will begin to phase out beginning in the 89th biennium as the Returned-Value formula begins to contribute to funding.

**(12) Benchmarks:**

TSTC is an active participant in the THECB 60x30 strategic plan, which provides an excellent source of external benchmarks. TSTC is continually monitoring progress toward planned goals, and has achieved early success on several key benchmarks. TSTC is actively working on improving the number and rate of students with a certification, which are the primary goals of the THECB 60x30 strategic plan.

**(13) Performance Reviews:**

Student success is continually reviewed throughout the fiscal year with the use of an increasing number of analytic tools. These reporting tools provide a view of the student life cycle, from application to working in Texas. While different departments are focused on various sections of the student lifecycle, the reporting tools enable all areas to be continually refined and improved throughout the year. Each semester program review reports are created for college stakeholders to continually monitor performance and to identify potential areas of improvement.

**Schedule 9: Non-Formula Support**  
88th Regular Session, Agency Submission, Version 1  
Automated Budget and Evaluation System of Texas (ABEST)

---

**71F Texas State Technical College - Ft. Bend**

---

**Schedule 9: Non-Formula Support**  
88th Regular Session, Agency Submission, Version 1  
Automated Budget and Evaluation System of Texas (ABEST)

---

**71F Texas State Technical College - Ft. Bend**

---

**2 - Institutional Enhancement**

<b>(1) Year Non-Formula Support Item First Funded:</b>	2020
Year Non-Formula Support Item Established:	2020
Original Appropriation:	\$747,791

**(2) Mission:**

This funding is an important source of funding for various core E&G components. For the 2022-2023 biennial budget, these funds will continue to support essential educational support activities, instructional services, and student services.

**(3) (a) Major Accomplishments to Date:**

Educational support. Increased investment in student outreach services resulting in higher levels of prospect to registered students.

Instructional support. Deployment of faculty development across statewide campuses with emphasis on new faculty bootcamp, multi-level instructor certification courses, department chair training, competency based education training, and online learning courses and assistance.

Institutional Research Tools: Implementation of data research and visualization tools that enabled various levels of college stakeholders to participate in the improvement of instructional programs.

Educational Services: Increased capacity of success coach program to increase persistence/retention of students.

**(3) (b) Major Accomplishments Expected During the Next 2 Years:**

Instructional Support: Increased development for faculty, improving and innovating the student learning experience.

Institutional Research: Improved effectiveness and productivity of student learning through available dashboards, insights, and analysis.

Educational Support: Increasing persistence and retention levels facilitated by improved student support services as well as increased capacities.

**(4) Funding Source Prior to Receiving Non-Formula Support Funding:**

None

**(5) Formula Funding:**

None

**(6) Category:**

Institutional Enhancement

**(7) Transitional Funding:**

N

**Schedule 9: Non-Formula Support**  
88th Regular Session, Agency Submission, Version 1  
Automated Budget and Evaluation System of Texas (ABEST)

---

**71F Texas State Technical College - Ft. Bend**

---

**(8) Non-General Revenue Sources of Funding:**

None

**(9) Impact of Not Funding:**

Reduced capacity for Instructional Support. Due to core nature of services supported by Institutional Enhancement funds, funding reductions or eliminations would be evaluated statewide across funding categories. Most likely consequences of lower funding will be reduced programming, specifically in areas that are considered low-performance, low-potential.

**(10) Non-Formula Support Needed on Permanent Basis/Discontinuu**

Non-formula support will be needed on a permanent basis.

**(11) Non-Formula Support Associated with Time Frame:**

This item is not associated with a particular time frame.

**(12) Benchmarks:**

TSTC is an active participant in the THECB 60x30 strategic plan, which provides an excellent source external benchmarks. Although the strategic plan ends in 2030, TSTC statewide has already surpassed two of the four strategic plan goals. The first achievement is goal number 3, in which 80% of institution graduates will have completed programs with identified marketable skills. The second is goal number 4, in which TSTC students have an average student loan debt of 29% relative to their first year wage, which positively exceeds the plan goal of 60%. TSTC is actively working on improving the number and rate of students with a degree, which comprise the remaining two goals of the THECB 60x30 strategic plan.

**(13) Performance Reviews:**

Student success is continually reviewed throughout the fiscal year with the use of an increasing number of analytic tools. These reporting tools provide a view of the student lifec ycle, from application to working in Texas. While different departments are focused on various sections of the student life cycle, the reporting tools enable all areas to be continually refined and improved throughout the year. Each semester program review reports are created for college stakeholders to continually monitor performance and to identify potential areas of improvement.

---



**Schedule 9: Non-Formula Support**  
88th Regular Session, Agency Submission, Version 1  
Automated Budget and Evaluation System of Texas (ABEST)

---

**71F Texas State Technical College - Ft. Bend**

---

**3 - CDL Program Expansion**

**(1) Year Non-Formula Support Item First Funded:** 2024

Year Non-Formula Support Item Established: 2024

Original Appropriation: \$10,298,896

**(2) Mission:**

Texas industry and supply chain are constrained by the shortage in commercial driver's license (CDL) holders. This shortage spans across a broad range of industries in Texas. The American Trucking Association (ATA) reports that nearly 72% of all freight tonnage moved in the U.S. travels by commercial truck. In order to meet America's freight needs, the industry requires nearly three million heavy-duty Class 8 trucks and over three million truck drivers. ATA reports the current shortage of truck drivers nationwide is around 80,000 and will reach 160,000 by 2030 if current trends continue. According to the Texas Trucking Association (TXTA), the shortage of CDL drivers continues to negatively impact the supply chain, as 82 percent of Texas communities depend exclusively on trucks for needed products. TXTA also advises that 15 of every 1,000 jobs in Texas belong to truckers, and projects approximately 62,000 new job openings due to growth over the next 10 years. With its statewide scope and strategic placement across the Texas landscape, TSTC is positioned to address the CDL shortage in a meaningful way. To execute rapidly, TSTC requests an Exceptional Item of \$103 million to (1) establish or expand six CDL training and testing sites, (2) create licensing capacity to license approximately 2,400 drivers per year, and (3) establish a platform for an advanced transportation ecosystem around the state meeting both the immediate and future training needs of Texas.

**(3) (a) Major Accomplishments to Date:**

**(3) (b) Major Accomplishments Expected During the Next 2 Years:**

**(4) Funding Source Prior to Receiving Non-Formula Support Funding:**

None

**(5) Formula Funding:**

None

**(6) Category:**

Economic Development

**(7) Transitional Funding:**

N

**Schedule 9: Non-Formula Support**  
88th Regular Session, Agency Submission, Version 1  
Automated Budget and Evaluation System of Texas (ABEST)

---

**71F Texas State Technical College - Ft. Bend**

---

**(8) Non-General Revenue Sources of Funding:**

None

**(9) Impact of Not Funding:**

Continued Driver shortage, prolonged supply chain disruption and negative impact to the Texas Economy.

**(10) Non-Formula Support Needed on Permanent Basis/Discontinuation:**

Non-formula support will be needed on a permanent basis.

**(11) Non-Formula Support Associated with Time Frame:**

This item is not associated with a particular time frame.

**(12) Benchmarks:**

N/A

**(13) Performance Reviews:**

N/A

---





© TSTC. October 2022. All rights reserved.

Texas State Technical College (TSTC) is accredited by the Southern Association of Colleges and Schools Commission on Colleges (SACSCOC) to award Associate Degrees and Certificates of Completion. Contact the Southern Association of Colleges and Schools Commission on Colleges at 1866 Southern Lane, Decatur, Georgia 30033-4097 or call 404-679-4500 for questions about the accreditation of Texas State Technical College.

Equal opportunity shall be afforded within TSTC to all employees and applicants for admission or employment regardless of race, color, gender, religion, national origin, age, genetic information, disability or veteran status.

TSTC will make reasonable accommodations for persons with disabilities. TSTC's policy is that, in all aspects of its operations, each person with a disability shall be considered for admission or access to, or treatment or employment in, its programs and activities in accordance with Part 84 of Title 45, the regulation implementing Section 504 of the Rehabilitation Act of 1973.