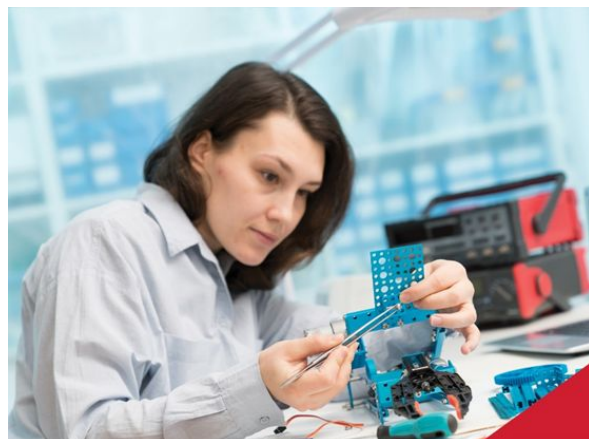


MECHATRONICS TECHNOLOGY

PROGRAM DETAILS

In Mechatronics Technology, you will add to your skillset the integration of electrical systems, computer controls systems, and industry 4.0 technology. You'll gain hands-on training in fluid power, electronics, instrumentation, motor controls, PLC, and smart-manufacturing. With these skills, you'll be able to analyze and troubleshoot any mechanical problem on the job with confidence.



Mechatronics Technology Pathway

Course	Course Name	Credit Hours
ELPT 1319	Fundamentals of Electricity	3
ELPT 1320	Fundamentals of Electricity II	3
MECH 1371	Industry Digital Devices	3
MECH 1372	Basic Programmable Logic Controller	3

Advanced Manufacturing And Machinery Mechanics Program of Study

The Advanced Manufacturing and Machinery program of study focuses on the assembly, operation, maintenance, and repair of electromechanical equipment or devices. CTE learners may work in a variety of mechanical fields, gaining knowledge and experience in robotics, refinery and pipeline systems, deep ocean exploration, or hazardous waste removal. CTE concentrators may work in a variety of fields of engineering.

TSTC AWARDS	Median Wage
Dual Enrollment Pathway	\$10-\$25/Hour
Associate Degree	\$20-\$70/Hour

CAREER OPPORTUNITIES



Are you interested in electronics and smart-manufacturing—essentially, all things technical? This could be the program for you! The word Mechatronics is the combination of mechanical and electronics— a new approach to design and development. Texas is among the largest employers in the U.S. in mechatronics. Demand throughout the state continues to be higher than the national average.

Mechatronics courses combine various disciplines for a holistic approach to solutions for engineering applications. It's an exciting interdisciplinary field that generates simpler, economical, reliable, and versatile products and equipment.

Mechatronics Technology Course Information (PEIMS)

Level 2

COURSE NAME	SERVICE ID	PREREQUISITES	COREQUISITES
ELPT 1319 Fundamentals of Electricity I/ Manufacturing Engineering Technology I	13032900 (1 credit)	None	None
MECH 1371 Industry Digital Devices/ Programmable Logic Computers I	N1303689 (1 credit)	None	None

COURSE NAME	SERVICE ID	PREREQUISITES	COREQUISITES
ELPT 1320 Fundamentals of Electricity II/ Manufacturing Engineering Technology II	13032950 (1 credit)	Manufacturing Engineering Technology I	None
MECH 1372 I Basic Programmable Logic Controller/ Programmable Logic Computers II	N1303690 (1 credit)	None	None